



Colliers

Accelerating Success

Patterson Road

Hoerner Road

For lease

Asking Price:

\$5.00

PSF, NNN

Contact us:

Drew Holbert, CCIM, SIOR

+1 501 850 0756

drew.holbert@colliers.com

Andrew Wiechern

+1 501 850 0733

andrew.wiechern@colliers.com

1 Allied Drive, Suite 1500,
Little Rock, AR 72202
P: +1 501 372 6161
colliers.com/arkansas

Warehouse & Distribution Facility with Abundant Secured Yard Space

4200 Hoerner Road, Little Rock, AR

Features

- Extensive redevelopment underway
- Expected delivery: Q1 2023
- Available: 50,000 - 110,000 SF
- Lease rate: \$5.00/SF, NNN
- NNN estimate: \$0.50/SF
- Office and sprinkler: to suit and included in the above rate
- Up to 10 acres of lay-down yard
- Includes dock-high and drive-in doors
- Clear height: 18' - 20'
- Steel frame/tilt/wall construction
- Professionally managed by Colliers | Arkansas

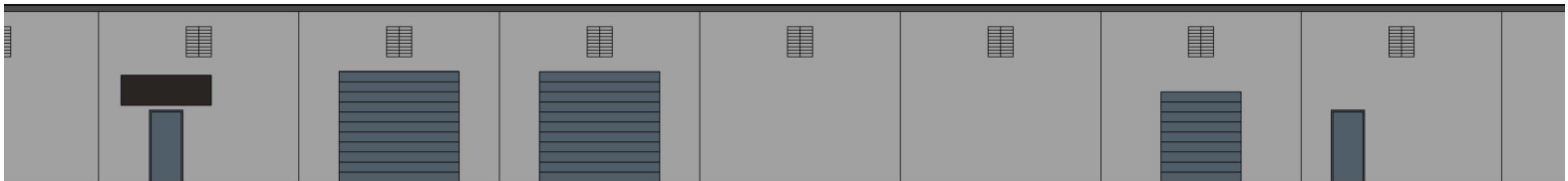
Copyright © 2021 Colliers International.

Information herein has been obtained from sources deemed reliable, however its accuracy cannot be guaranteed. The user is required to conduct their own due diligence and verification.

Neighborhood Map



Renderings



Contact us:

1 Allied Drive, Suite 1500,
Little Rock, AR 72202
P: +1 501 372 6161
colliers.com/arkansas

Drew Holbert, CCIM, SIOR
+1 501 850 0756
drew.holbert@colliers.com

Andrew Wiechern
+1 501 850 0733
andrew.wiechern@colliers.com