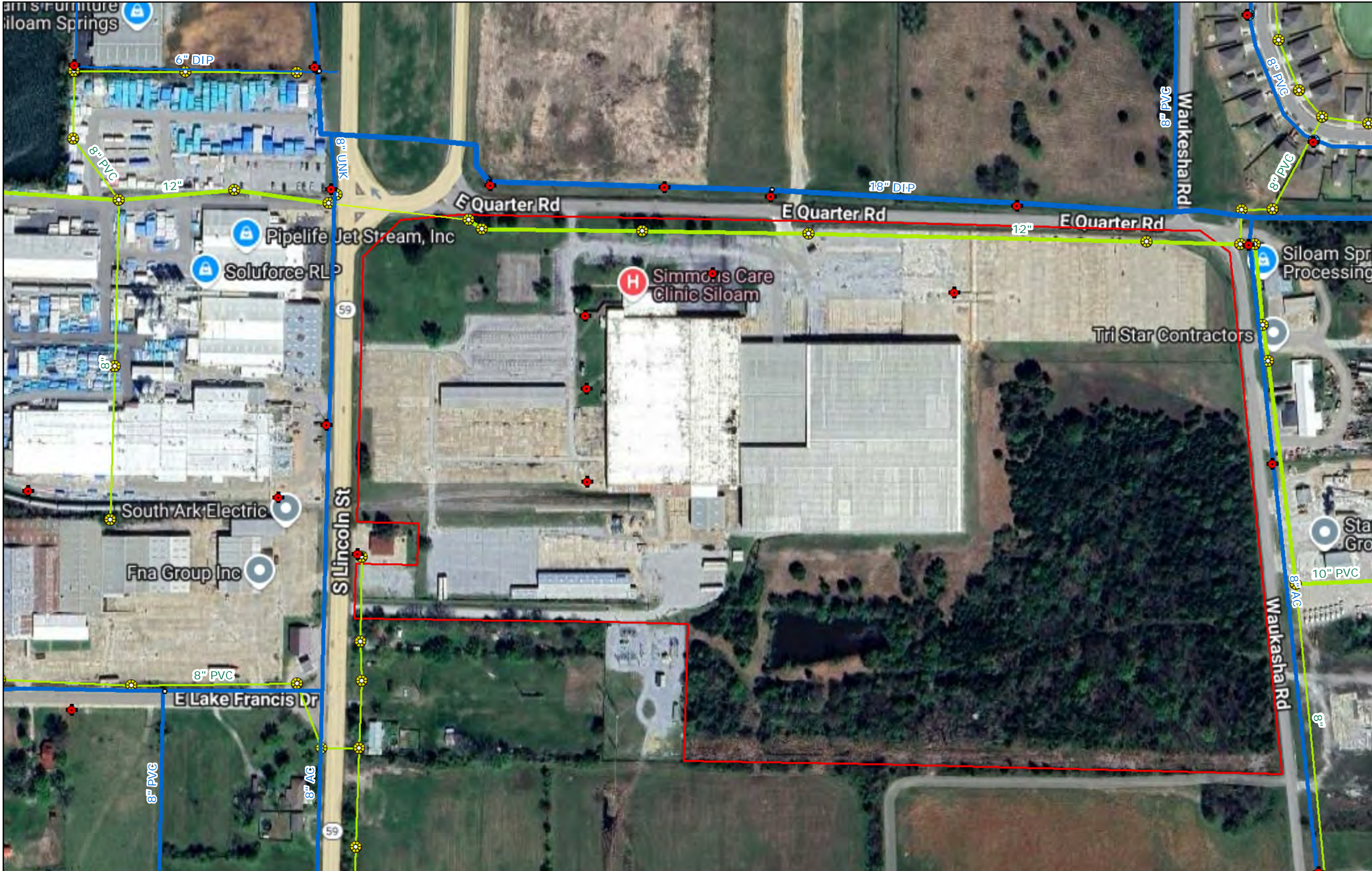


1700 E Quarter Road Industrial Building - Siloam Springs



- + Subject Property
- G Hydrants
- Sewer Manholes
- Water Mains
- Diameter Unknown
- 0.75" - 6"
- 8" - 12"
- 16" - 24"
- Sewer Mains
- Diameter Unknown
- 4" - 8"
- 10" - 18"
- 20" - 48"
- Abandoned in Place

0 200 400 Ft.

Sources: Benton County GIS, Arkansas GIS Office, National Hydrography Dataset, Google