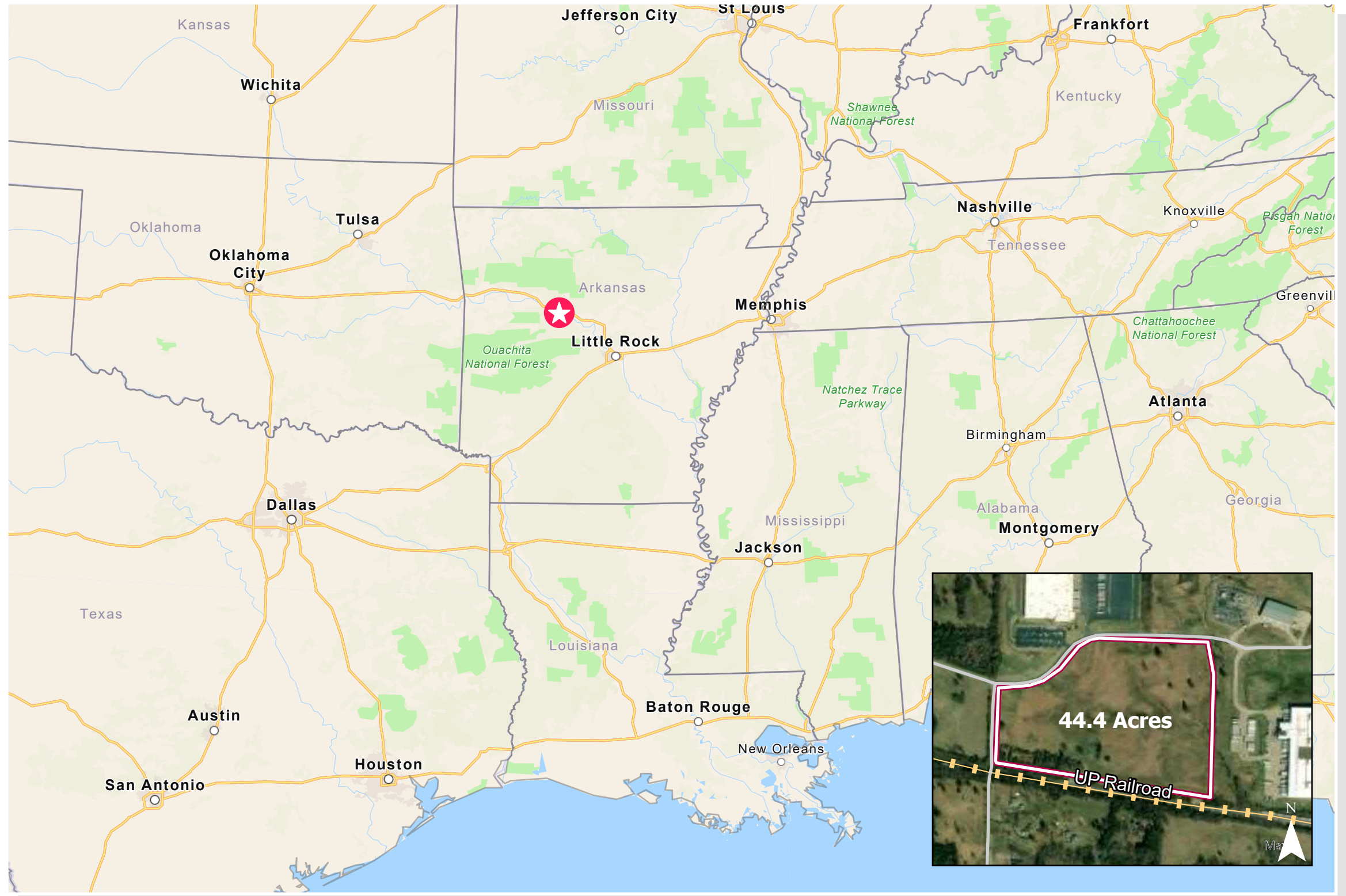

BUTTERFIELD - RUSSELLVILLE EAST END SITE EVALUATION MAP BOOK



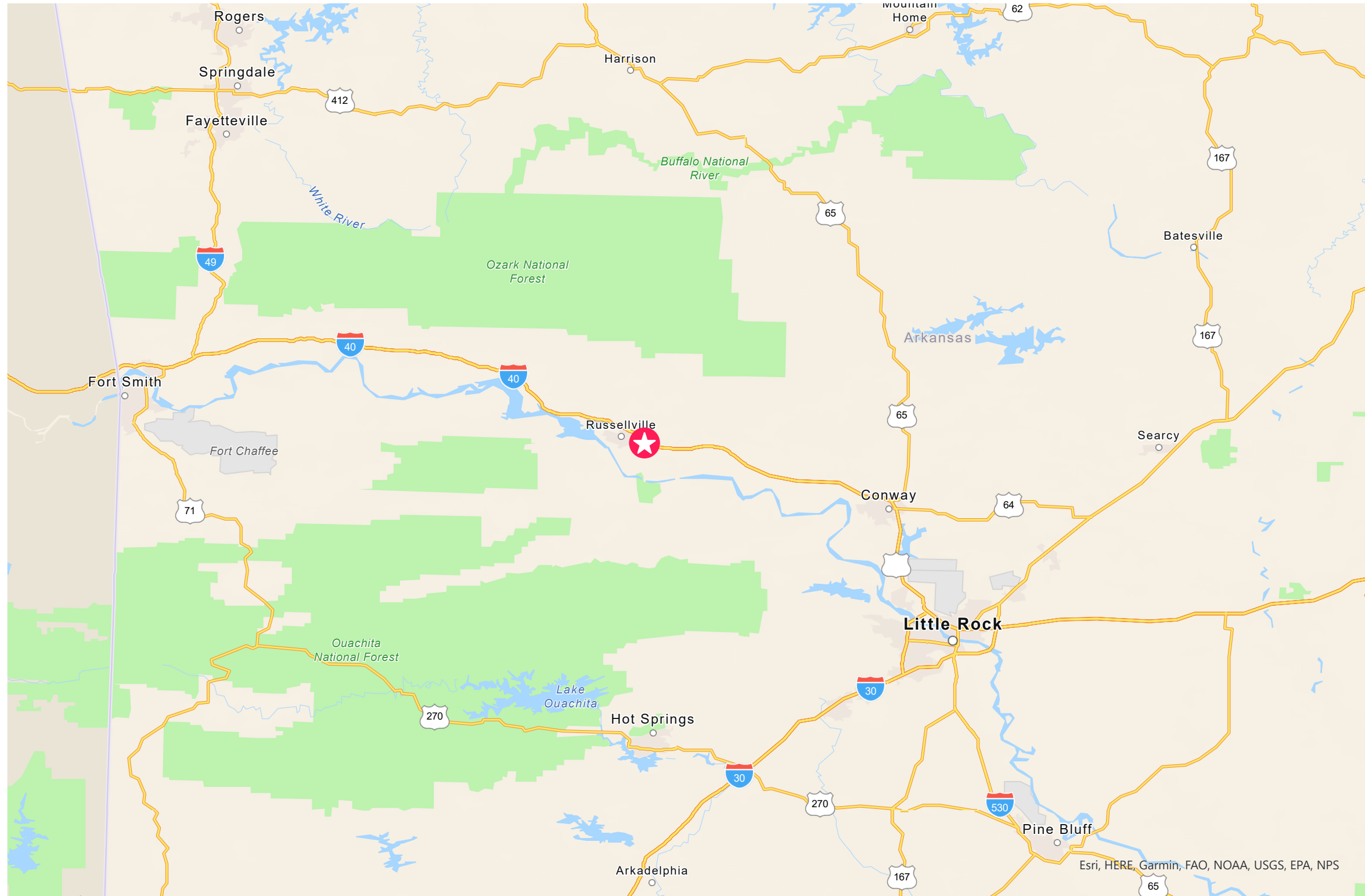
**BUTTERFIELD -
RUSSELLVILLE EAST END**
COORDINATES: -93.073399, 35.260942

TABLE OF CONTENTS

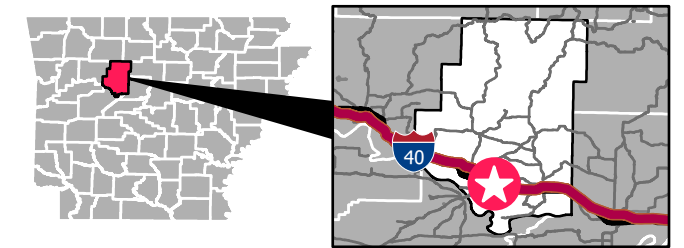
- TRANSPORTATION, REGIONAL
- TRANSPORTATION, IMMEDIATE
- AERIAL
- TOPOGRAPHIC MAP
- ELEVATION CONTOURS
- FEMA FLOOD HAZARDS
- NATIONAL WETLANDS INVENTORY
- PIPELINE INFRASTRUCTURE
- ENTERGY'S ELECTRICAL INFRASTRUCTURE
- SURROUNDING USE



BUTTERFIELD - RUSSELLVILLE EAST END / TRANSPORTATION, REGIONAL



POPE COUNTY



LEGEND

 Site Location

SOURCE

SCALE

0 20 40 Miles

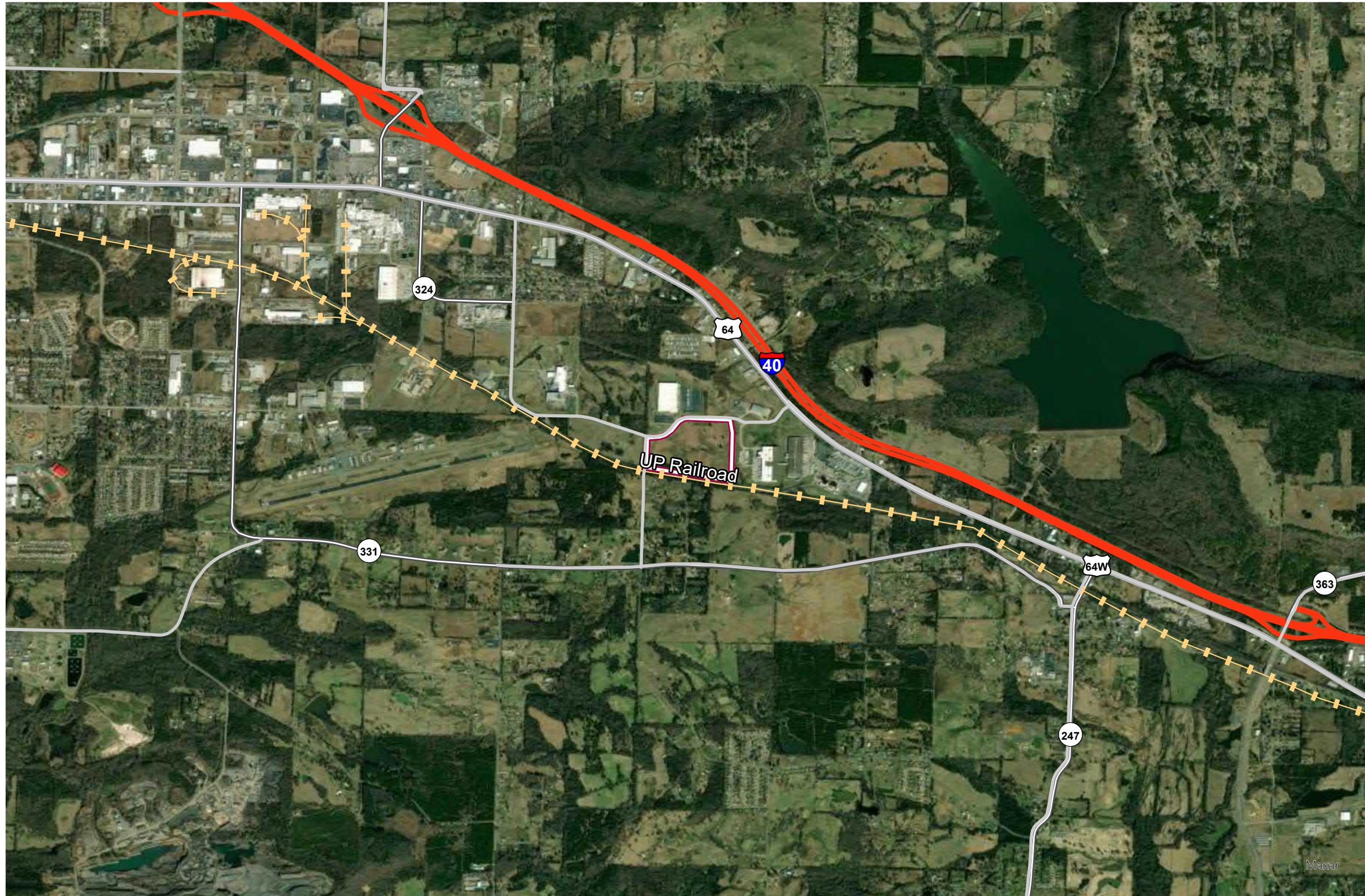
0 25.34 50.68 Kilometers



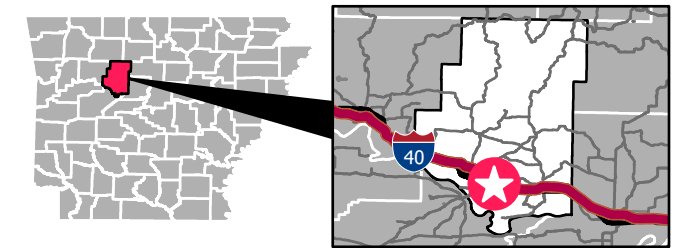
Date: 04/2022
Created by: RPG

These drawings are provided merely to assist in economic development efforts. The Entergy Companies make no representations or warranties whatsoever regarding the accuracy or completeness of any information contained herein nor the condition or suitability of any properties. Users should direct inquiries about any property to the listing broker for that property.

BUTTERFIELD - RUSSELLVILLE EAST END / TRANSPORTATION, IMMEDIATE



POPE COUNTY




LEGEND

 Property Boundary

 Railroads

Primary & Secondary Roads

 Interstate Highway

 U.S. Highway

 State Highway

SOURCE

Highways: Primary&Secondary Roadways, Tiger 2021
Railroads: Federal Railroad Administration, Bureau of Transportation Statistics, ESRI, 2021

SCALE

0 0.5 1 Miles

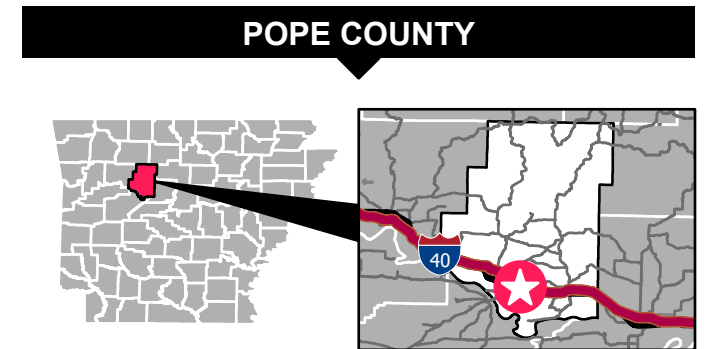
0 633.6 1,267.2 Meters





Date: 04/2022
Created by: RPG

These drawings are provided merely to assist in economic development efforts. The Entergy Companies make no representations or warranties whatsoever regarding the accuracy or completeness of any information contained herein nor the condition or suitability of any properties. Users should direct inquiries about any property to the listing broker for that property.

BUTTERFIELD - RUSSELLVILLE EAST END / AERIAL



LEGEND

-  Property Boundary
-  Railroads

SOURCE

Highways: Primary&Secondary Roadways, Tiger 2021
Railroads: Federal Railroad Administration, Bureau of Transportation Statistics, ESRI, 2021

SCALE

0 250 500 Feet

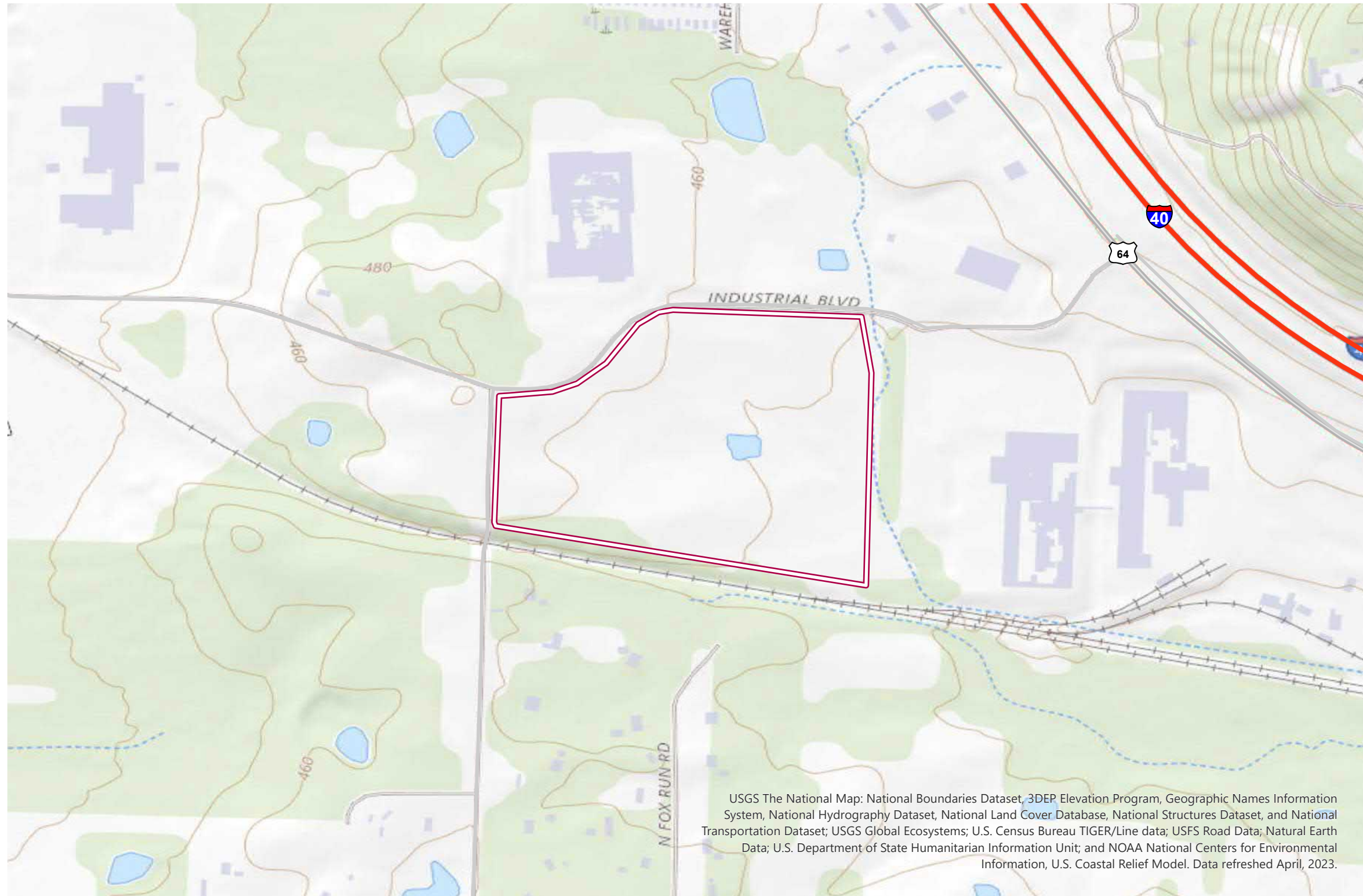
0 60 120 Meters



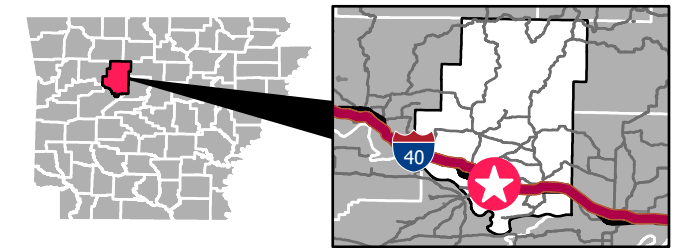
Date: 04/2022
Created by: RPG

These drawings are provided merely to assist in economic development efforts. The Entergy Companies make no representations or warranties whatsoever regarding the accuracy or completeness of any information contained herein nor the condition or suitability of any properties. Users should direct inquiries about any property to the listing broker for that property.




BUTTERFIELD - RUSSELLVILLE EAST END / TOPOGRAPHIC MAP



POPE COUNTY

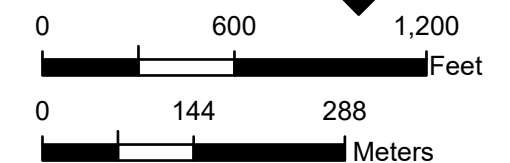


LEGEND

-  Property Boundary
-  Interstate Highway
-  U.S. Highway

SOURCE

SCALE

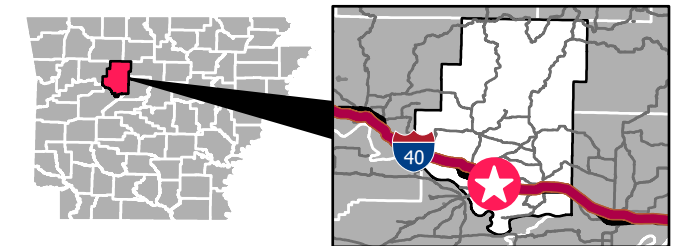


These drawings are provided merely to assist in economic development efforts. The Entergy Companies make no representations or warranties whatsoever regarding the accuracy or completeness of any information contained herein nor the condition or suitability of any properties. Users should direct inquiries about any property to the listing broker for that property.

BUTTERFIELD - RUSSELLVILLE EAST END / ELEVATION CONTOURS



POPE COUNTY




LEGEND

 Property Boundary

 Railroads

Elevation Contour (ft)

375.0 - 435.0

 435.1 - 495.0

SOURCE

Elevation Contours: Derived from ESRI Terrain Dataset, 05/2022

SCALE

0 250 500 Feet

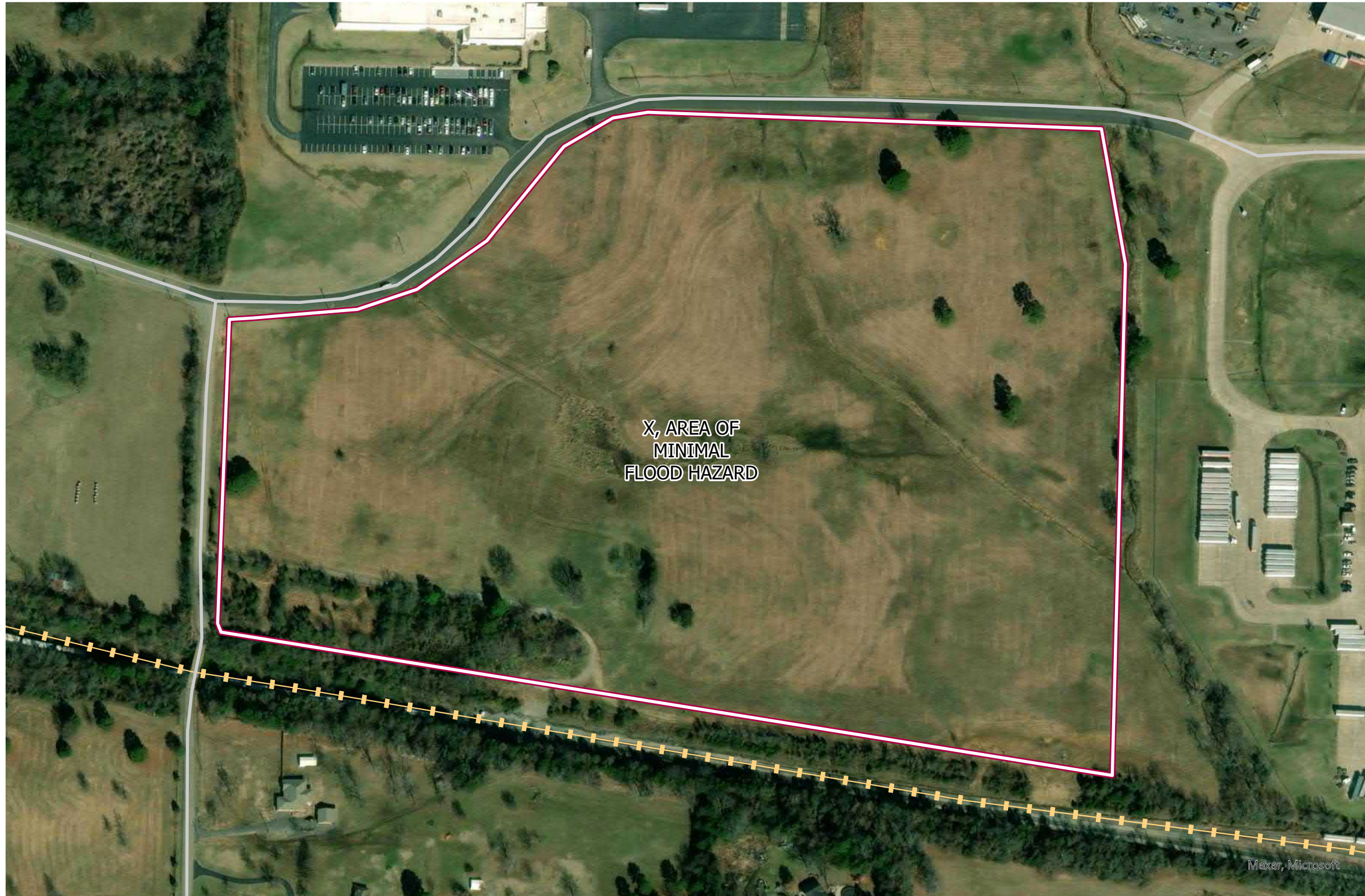
0 60 120 Meters



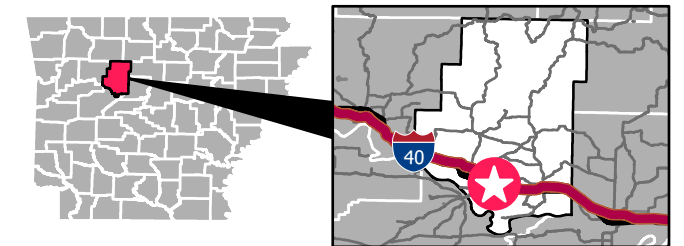
Date: 04/2022
Created by: RPG

These drawings are provided merely to assist in economic development efforts. The Entergy Companies make no representations or warranties whatsoever regarding the accuracy or completeness of any information contained herein nor the condition or suitability of any properties. Users should direct inquiries about any property to the listing broker for that property.




BUTTERFIELD - RUSSELLVILLE EAST END / FEMA FLOOD HAZARDS



POPE COUNTY

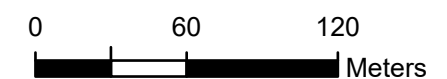
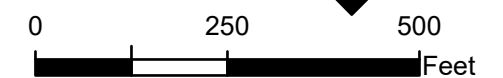


LEGEND

-  Property Boundary
-  Railroads
- Flood Zone, Sub Type**
-  X, AREA OF MINIMAL FLOOD HAZARD

SOURCE

SCALE

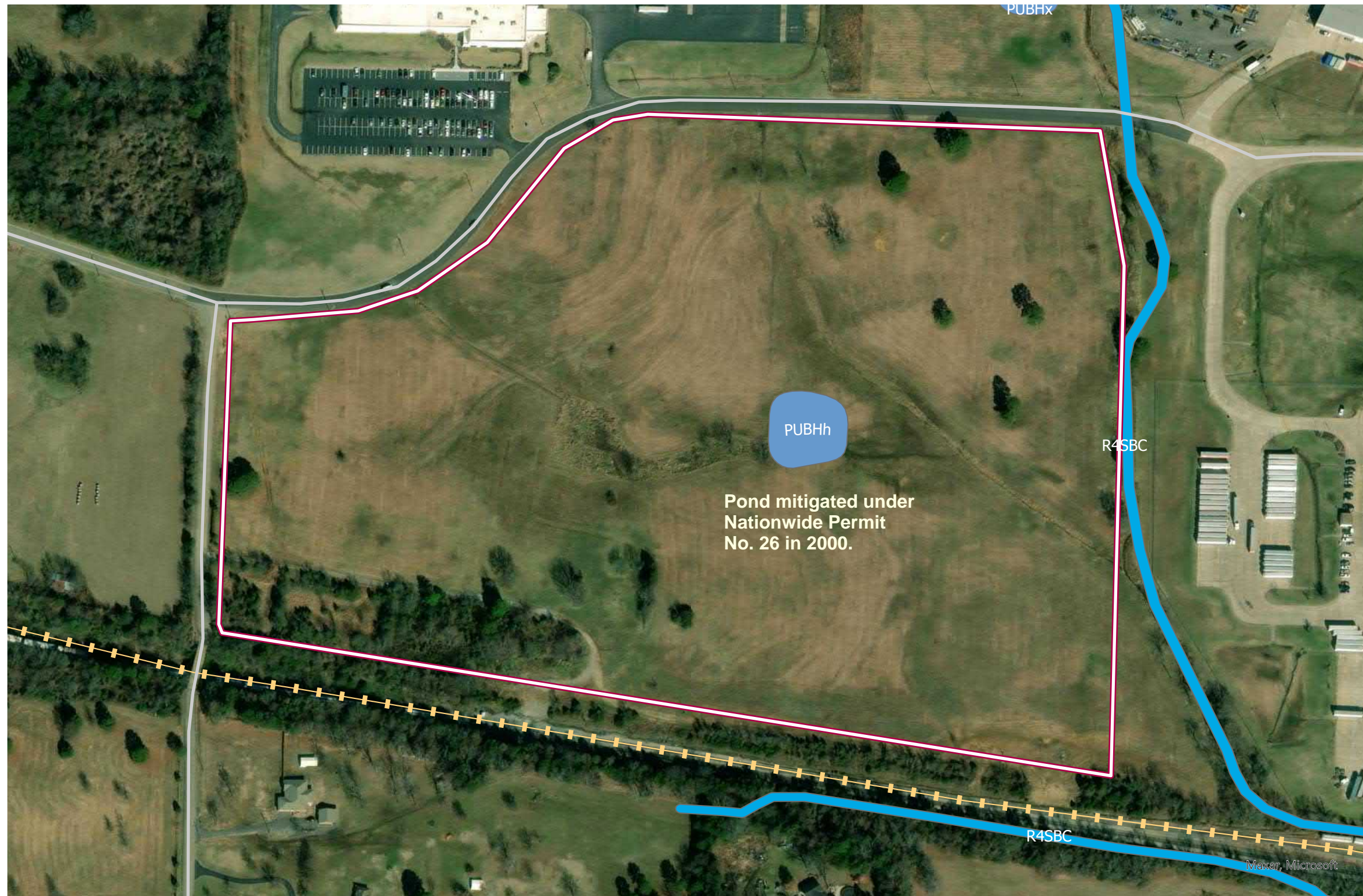


N

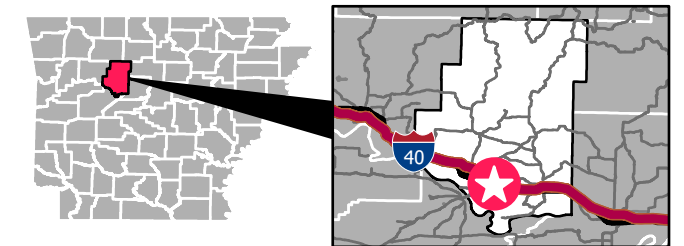
Date: 04/2022
Created by: RPG

These drawings are provided merely to assist in economic development efforts. The Entergy Companies make no representations or warranties whatsoever regarding the accuracy or completeness of any information contained herein nor the condition or suitability of any properties. Users should direct inquiries about any property to the listing broker for that property.





BUTTERFIELD - RUSSELLVILLE EAST END / NATIONAL WETLAND INVENTORY



POPE COUNTY



LEGEND

-  Property Boundary
-  Railroads
- Wetland Type**
-  Freshwater Pond
-  Riverine

The National Wetlands Inventory Service's objective of mapping wetlands and deepwater habitats is to produce reconnaissance level information on the location, type, and size of these resources. The maps are prepared from the analysis of high altitude imagery. Wetlands are identified based on vegetation, visible hydrology and geography. A margin of error is inherent in the use of imagery; thus, detailed on-the-ground inspection of any particular site may result in revision of the wetland boundaries or classification established through image analysis.

SOURCE

Wetlands: US Fish and Wildlife Services, National Wetland Inventory, 04/2022

SCALE

0 250 500 Feet

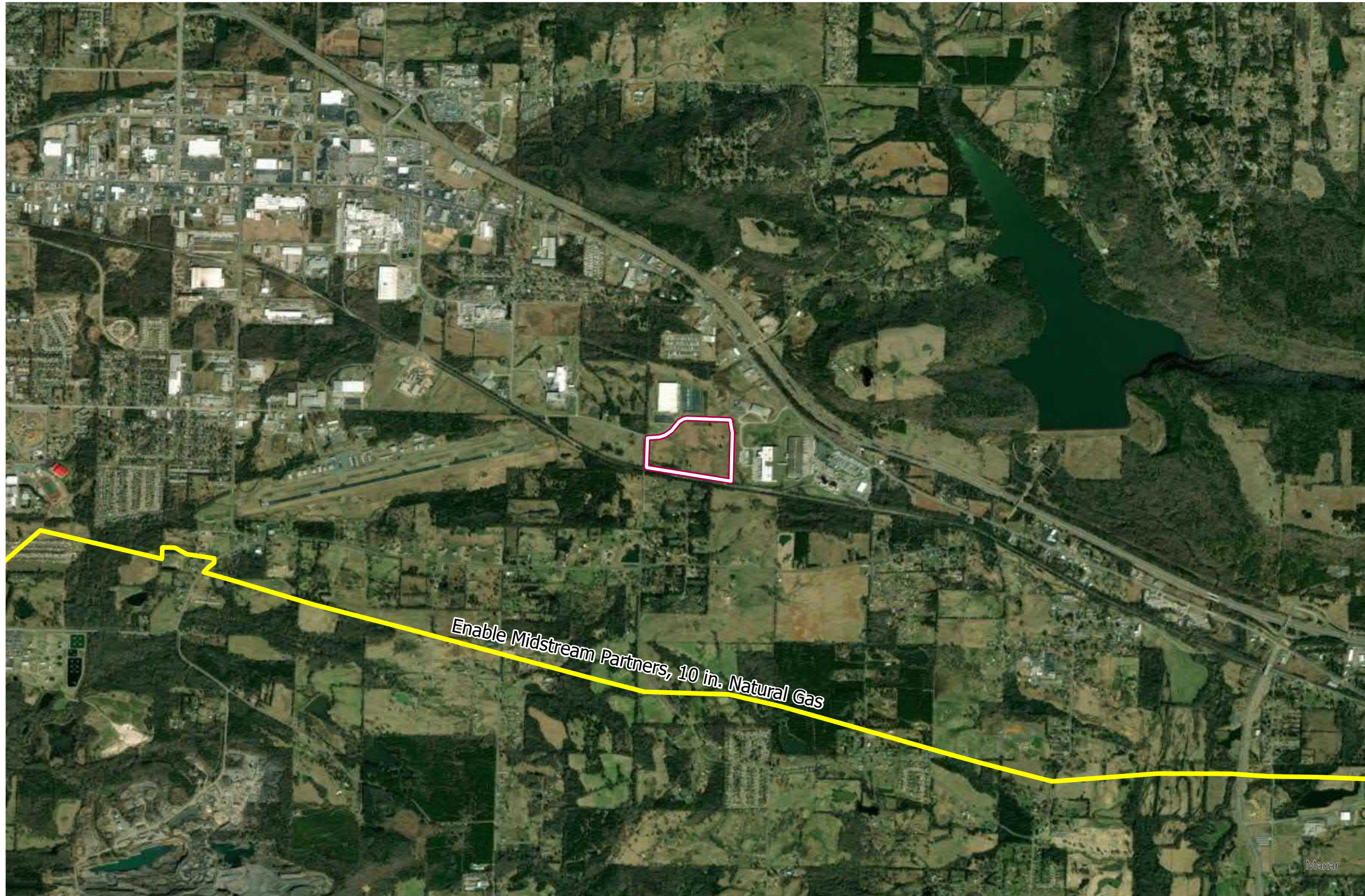
0 60 120 Meters

N

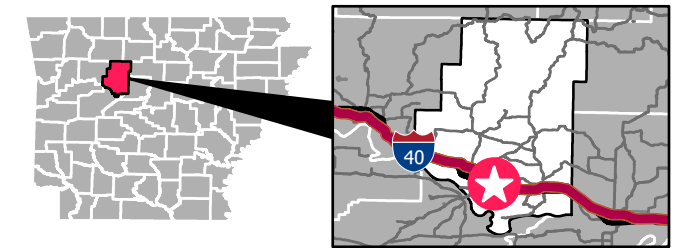
Date: 04/2022
Created by: RPG

These drawings are provided merely to assist in economic development efforts. The Entergy Companies make no representations or warranties whatsoever regarding the accuracy or completeness of any information contained herein nor the condition or suitability of any properties. Users should direct inquiries about any property to the listing broker for that property.



BUTTERFIELD - RUSSELLVILLE EAST END / PIPELINE INFRASTRUCTURE



POPE COUNTY



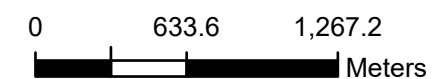
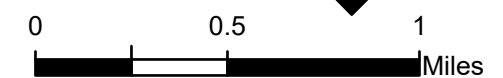
LEGEND

-  Property Boundary
- Pipeline Commodity**
-  Natural Gas,

SOURCE

Pipelines : Endeavor MAPSearch , 2021

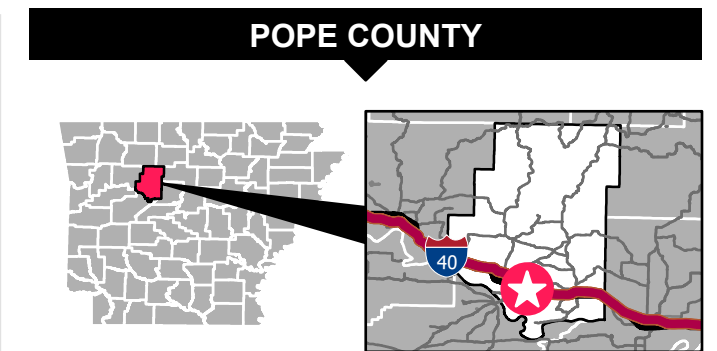
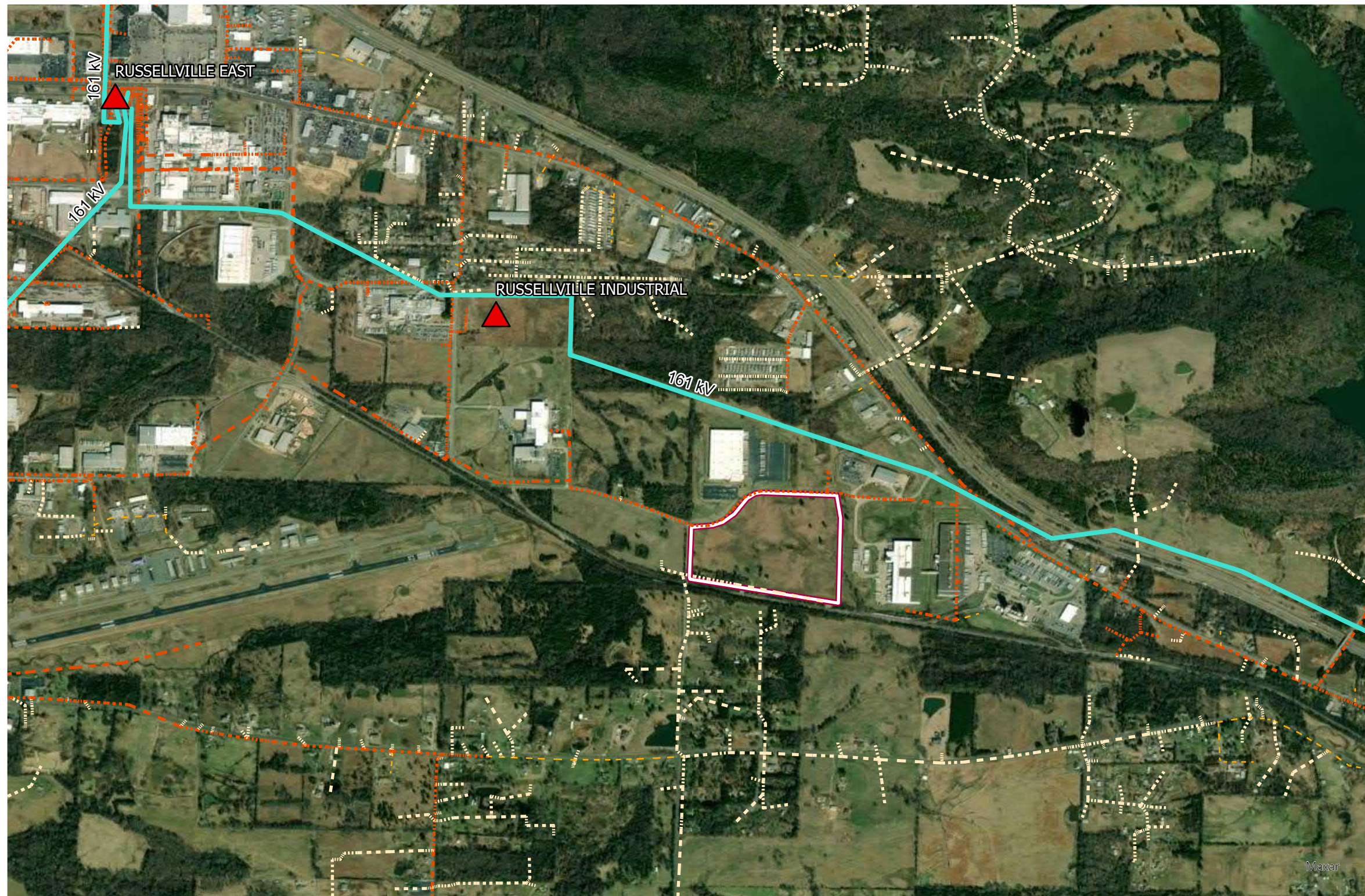
SCALE









Date: 04/2022
Created by: RPG

These drawings are provided merely to assist in economic development efforts. The Entergy Companies make no representations or warranties whatsoever regarding the accuracy or completeness of any information contained herein nor the condition or suitability of any properties. Users should direct inquiries about any property to the listing broker for that property.

BUTTERFIELD - RUSSELLVILLE EAST END / ELECTRICAL INFRASTRUCTURE



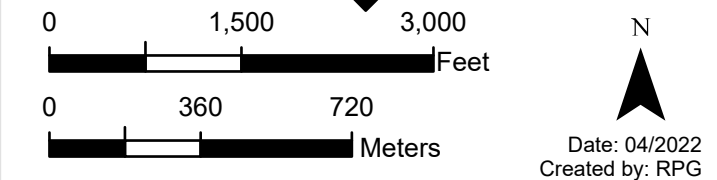
LEGEND

-  Property Boundary
-  Electrical Substations
- Electrical Transmission (kV)**
-  161
- Electrical Distribution**
- Voltage, Phase**
-  13.8 kV, Single Phase
-  13.8 kV, Two Phase
-  13.8 kV, Three Phase

SOURCE

Electrical: Entergy 2022

SCALE

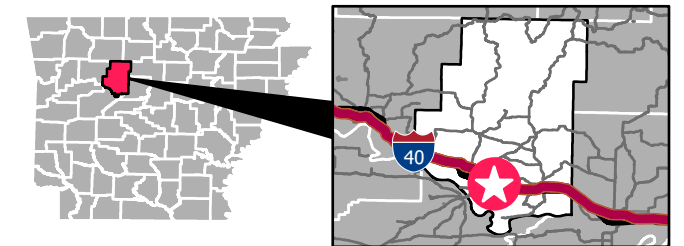


These drawings are provided merely to assist in economic development efforts. The Entergy Companies make no representations or warranties whatsoever regarding the accuracy or completeness of any information contained herein nor the condition or suitability of any properties. Users should direct inquiries about any property to the listing broker for that property.

BUTTERFIELD - RUSSELLVILLE EAST END / SURROUNDING USE



POPE COUNTY




LEGEND

 Property Boundary

 Railroads

Primary & Secondary Roads

 Interstate Highway

 U.S. Highway

 State Highway

SOURCE

Highways: Primary&Secondary Roadways, Tiger 2021
Railroads: Federal Railroad Administration, Bureau of Transportation Statistics, ESRI, 2021

SCALE

0 1,500 3,000
Feet

0 360 720
Meters



Date: 04/2022
Created by: RPG

These drawings are provided merely to assist in economic development efforts. The Entergy Companies make no representations or warranties whatsoever regarding the accuracy or completeness of any information contained herein nor the condition or suitability of any properties. Users should direct inquiries about any property to the listing broker for that property.

Zoning

East End Industrial Park

