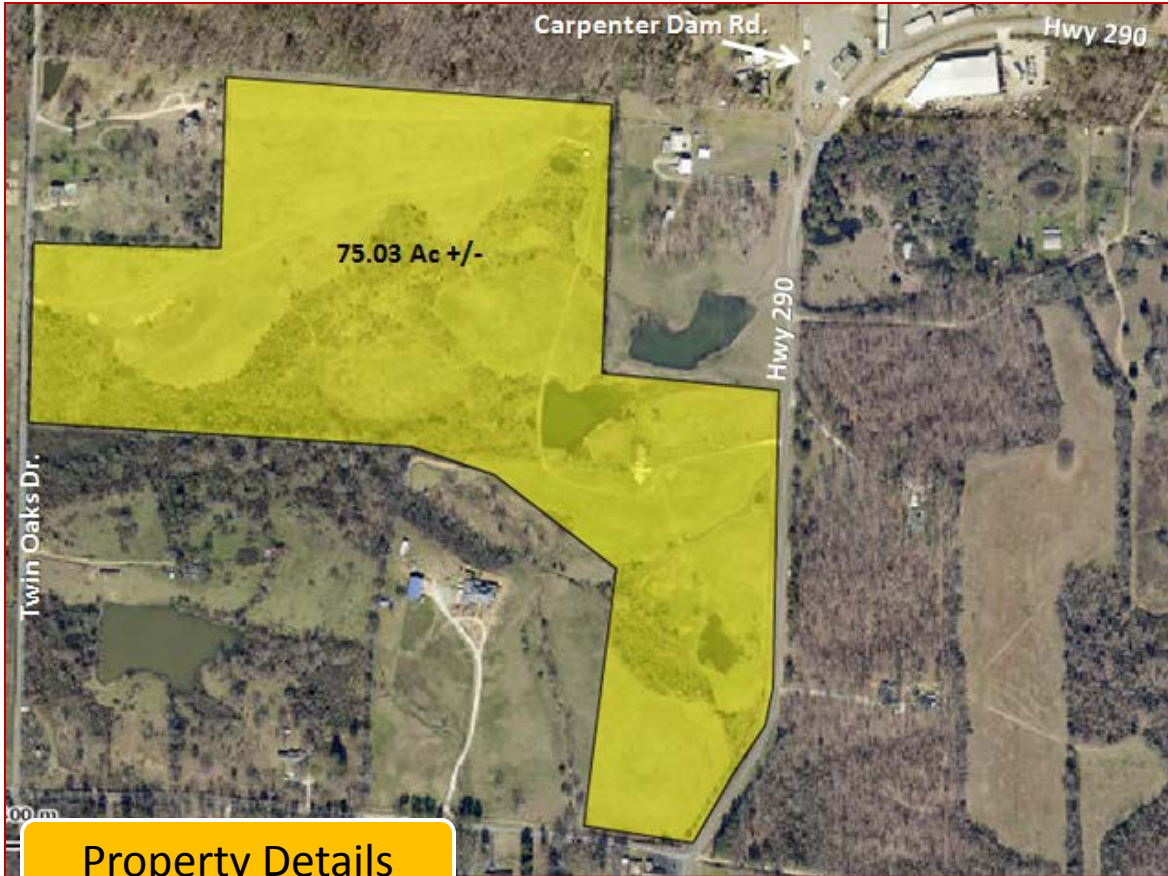




**LARGE DEVELOPMENT TRACT
IN LAKESIDE SCHOOL DISTRICT**

Hwy 290 near Carpenter Dam Rd., Hot Springs, AR



Property Details

Over 75 Acres
1,700' +/- frontage on Hwy 290
645' +/- frontage on Twin Oaks
Near Carpenter Dam Rd. & Hwy 290 Intersection
Lakeside School District
Excellent for residential Development
Commercial Opportunities

\$13,900/Acre

Contact:

Brian J. Gehrki

bgehrki@yahoo.com

Mobile: 501.258.5500 Office: 501.623.2200

1401 Malvern Avenue, Suite 272, Hot Springs, AR www.gehrki.com



This information has been secured from sources we believe to be reliable, but we make no representations or warranties, expressed or implied, as to the accuracy of the information. References to square footage or acres are approximate. Buyer must verify the information and bears all risk for any inaccuracies. Agency Disclosure: Gehrki Commercial Real Estate represents the owner of the property described in the marketing information provided.