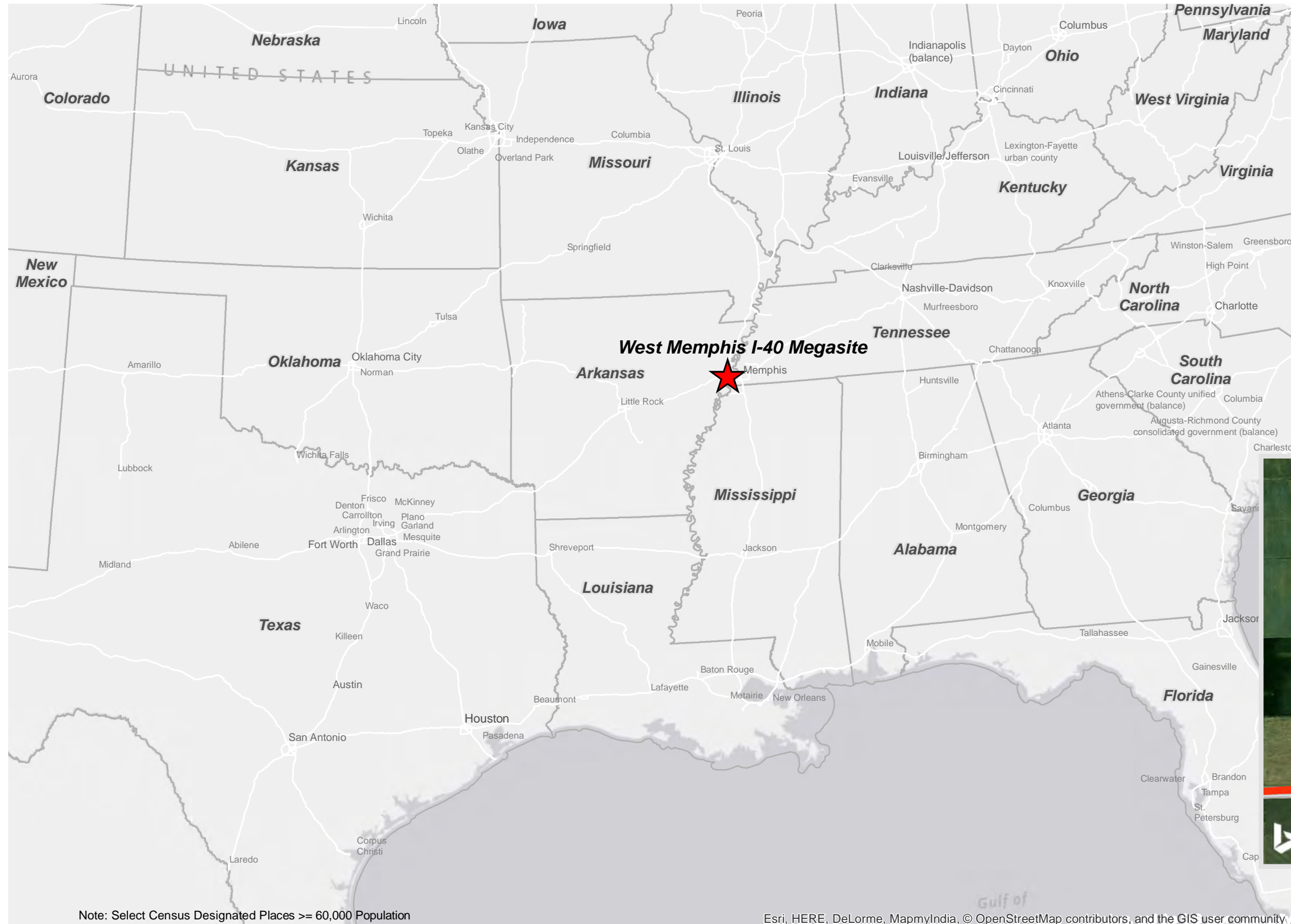




WEST MEMPHIS I-40 MEGASITE

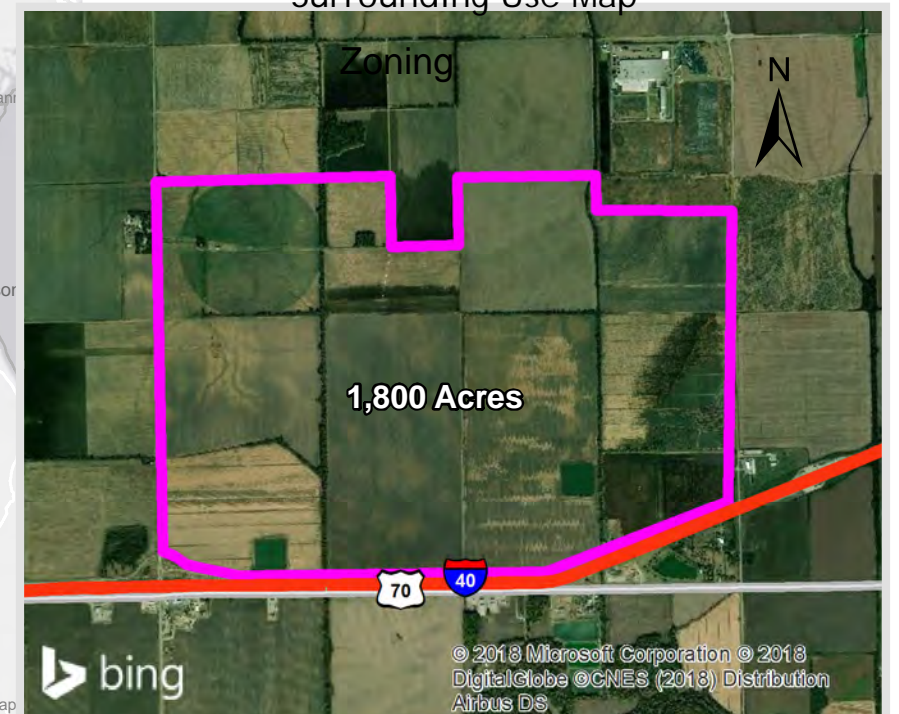
West Memphis, AR

Coordinates: -90.274643, 35.15857



Contents

- Transportation, Regional
- Transportation, Immediate Vicinity
- Aerial
- Topographic Map
- Elevation Contours
- FEMA Flood Hazard
- National Wetlands Inventory
- Pipeline Infrastructure
- Electrical Infrastructure
- Proposed Utilities
- Surrounding Use Map



Note: Select Census Designated Places >= 60,000 Population

Esri, HERE, DeLorme, MapmyIndia, © OpenStreetMap contributors, and the GIS user community

© 2018 Microsoft Corporation © 2018 DigitalGlobe ©CNES (2018) Distribution Airbus DS



**BUSINESS
DEVELOPMENT**
ARKANSAS

West Memphis I-40 Megasite

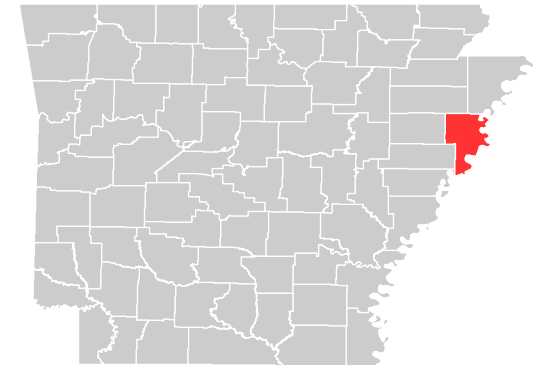
Transportation - Regional

425 West Capitol Ave, Suite 2700
Little Rock, AR 72201

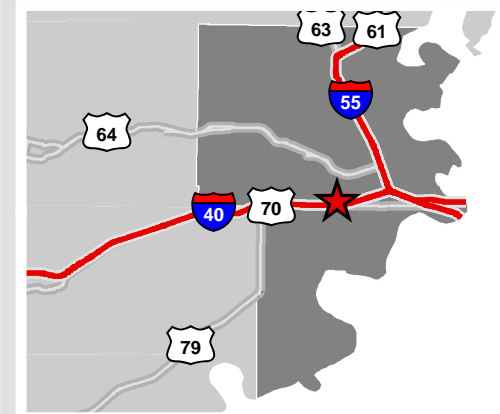
Phone: 1-888-301-5861

goentergy.com/ar

CRITTENDEN COUNTY



VICINITY



LEGEND

- Site Location
- Port
- Airports
- Railroads
- Interstate
- U.S.

NOTE

These drawings are provided merely to assist in economic development efforts. The Entergy Companies make no representations or warranties whatsoever regarding the accuracy or completeness of any information contained herein nor the condition or suitability of any properties. Users should direct inquiries about any property to the listing broker for that property.

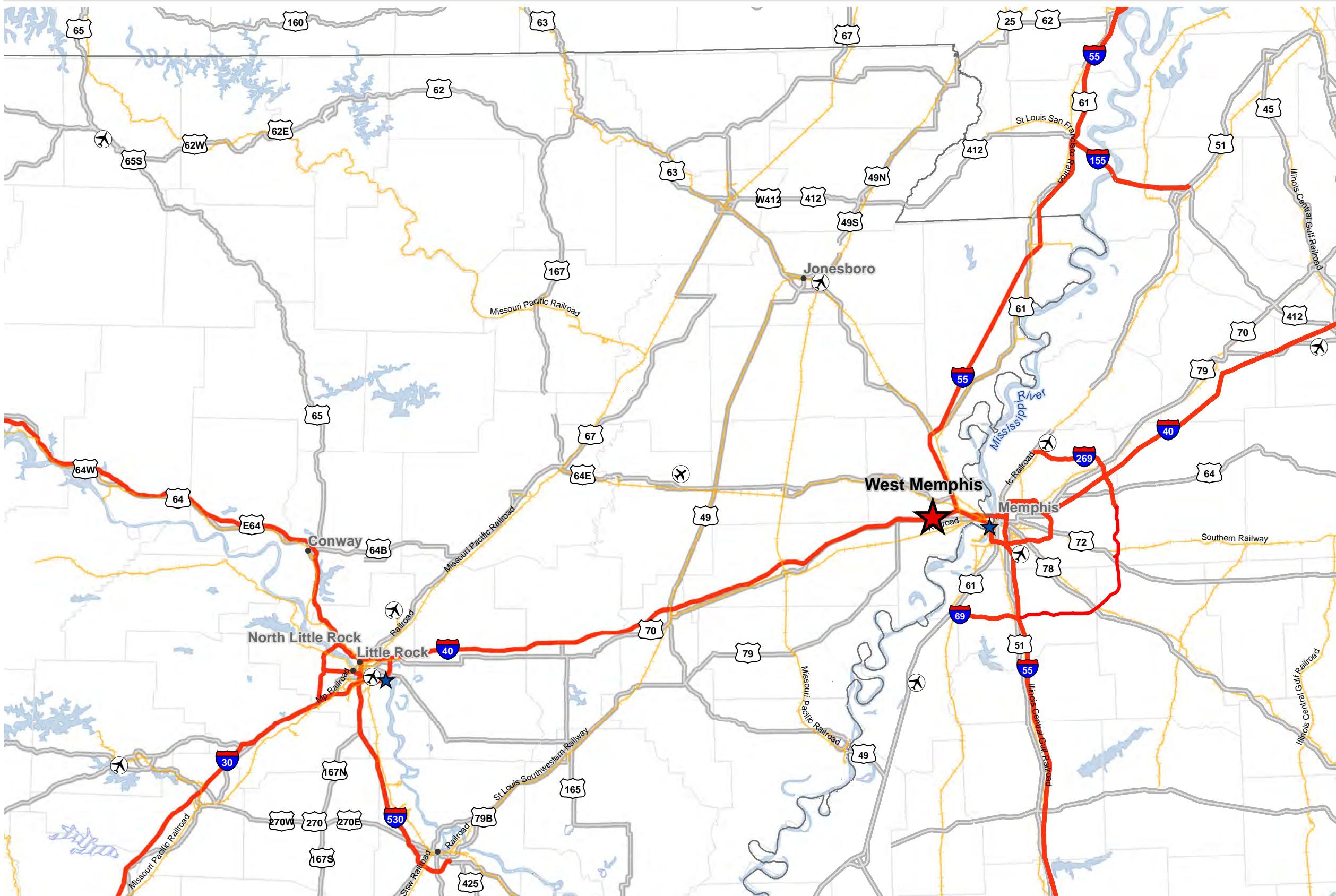
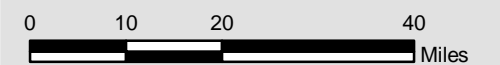
SOURCE

Roads: Census/TIGER database, 2014
Railroads: Federal Railroad Administration, Bureau of Transportation Statistics, ESRI, 2014
ESRI Basemaps; ESRI Datamaps 10.2

Created by: RPG
Date: 8/2018



1:1,267,000





BUSINESS DEVELOPMENT
ARKANSAS

West Memphis I-40 Megasite

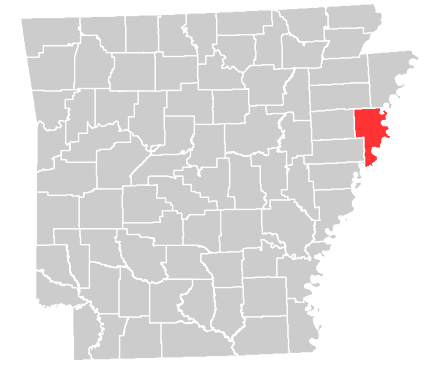
Transportation - Immediate

425 West Capitol Ave, Suite 2700
Little Rock, AR 72201

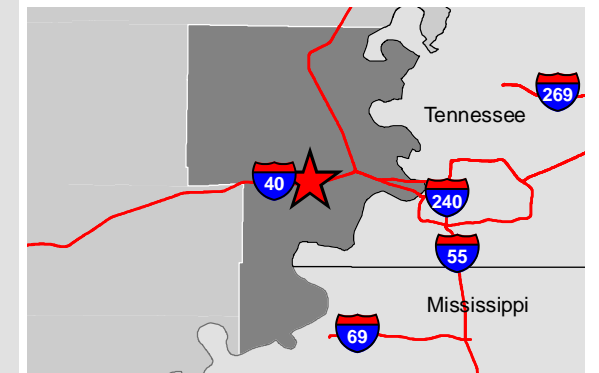
Phone: 1-888-301-5861

goentergy.com/ar

CRITTENDEN COUNTY



VICINITY MAP



LEGEND

- Property Boundary
- River Mile Markers
- Rail
- Ports
- Burlington Northern & Sante Fe - BNSF
- Canadian National Rwy (North America) - CN
- Union Pacific RR - UP

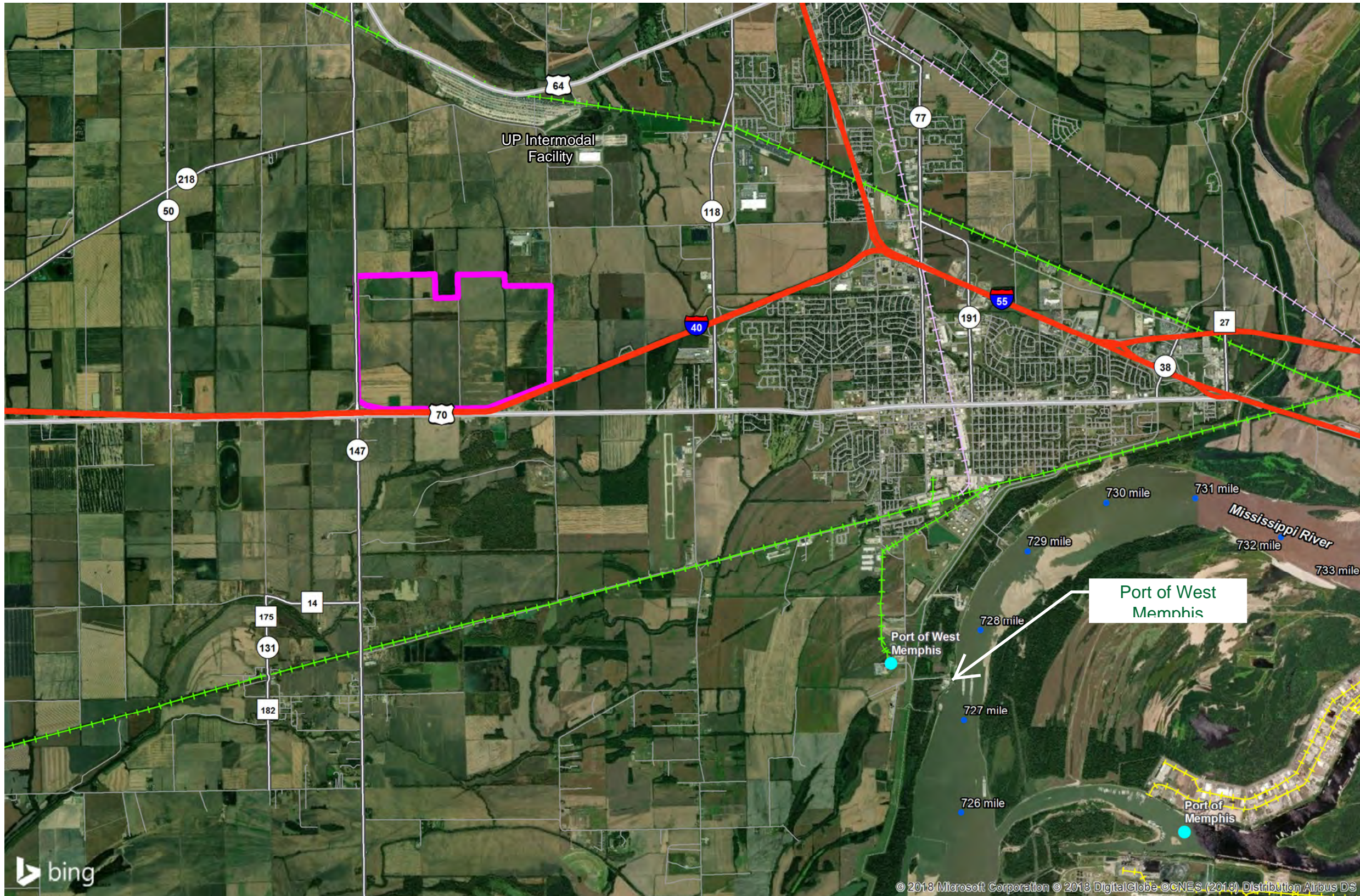
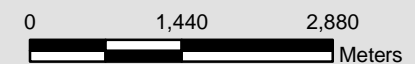
NOTE

These drawings are provided merely to assist in economic development efforts. The Entergy Companies make no representations or warranties whatsoever regarding the accuracy or completeness of any information contained herein nor the condition or suitability of any properties. Users should direct inquiries about any property to the listing broker for that property.

SOURCE

Source: Elevation contours derived from DEM data from USDA/NRCS - National Geospatial Center of Excellence

Created by: RPG
Date: 8/2018





BUSINESS
DEVELOPMENT
ARKANSAS

West Memphis I-40 Megasite

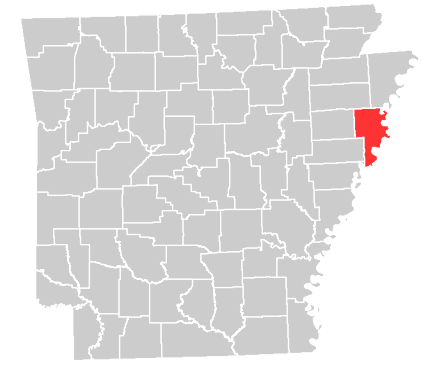
Aerial

425 West Capitol Ave, Suite 2700
Little Rock, AR 72201

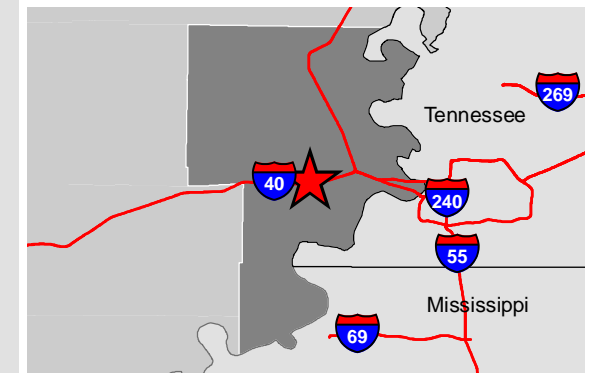
Phone: 1-888-301-5861

goentergy.com/ar


CRITTENDEN COUNTY



VICINITY MAP



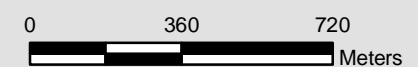
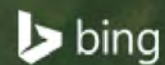
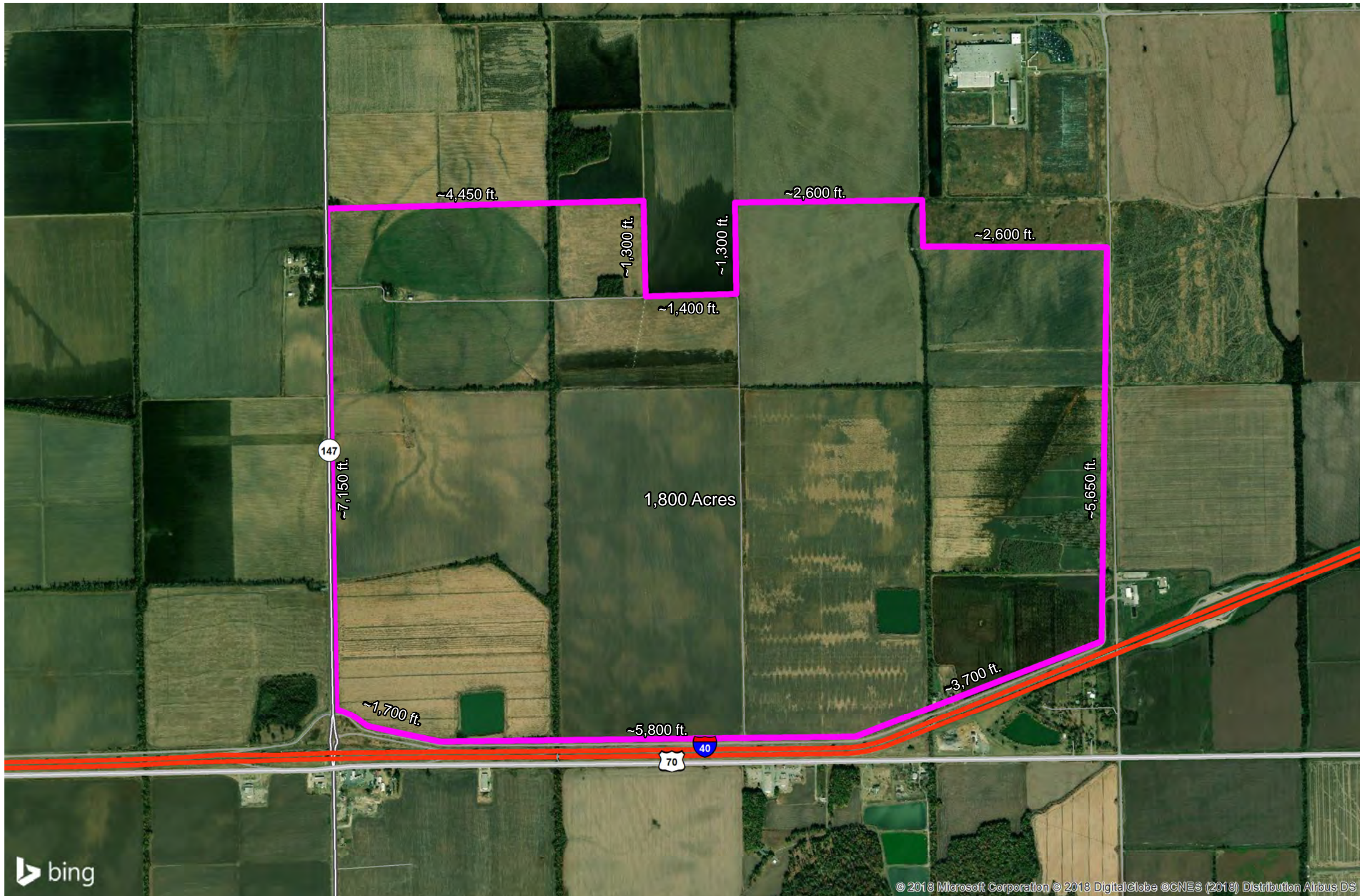
LEGEND

 Property Boundary

NOTE

These drawings are provided merely to assist in economic development efforts. The Entergy Companies make no representations or warranties whatsoever regarding the accuracy or completeness of any information contained herein nor the condition or suitability of any properties. Users should direct inquiries about any property to the listing broker for that property.

SOURCE





BUSINESS DEVELOPMENT ARKANSAS

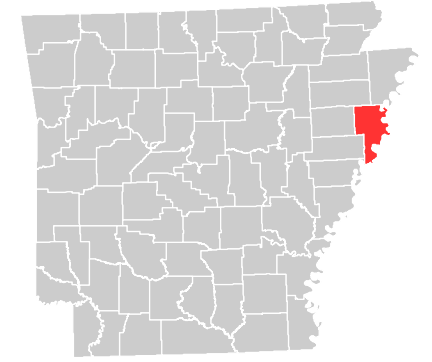
West Memphis I-40 Megasite Topographic Map

425 West Capitol Ave, Suite 2700
Little Rock, AR 72201

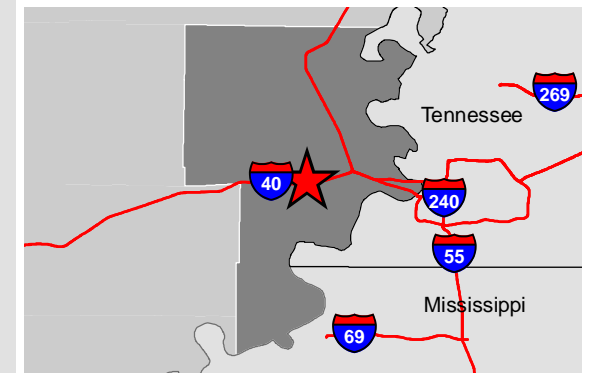
Phone: 1-888-301-5861

goentergy.com/ar

CRITTENDEN COUNTY



VICINITY MAP



LEGEND

Property Boundary

NOTE

These drawings are provided merely to assist in economic development efforts. The Entergy Companies make no representations or warranties whatsoever regarding the accuracy or completeness of any information contained herein nor the condition or suitability of any properties. Users should direct inquiries about any property to the listing broker for that property.

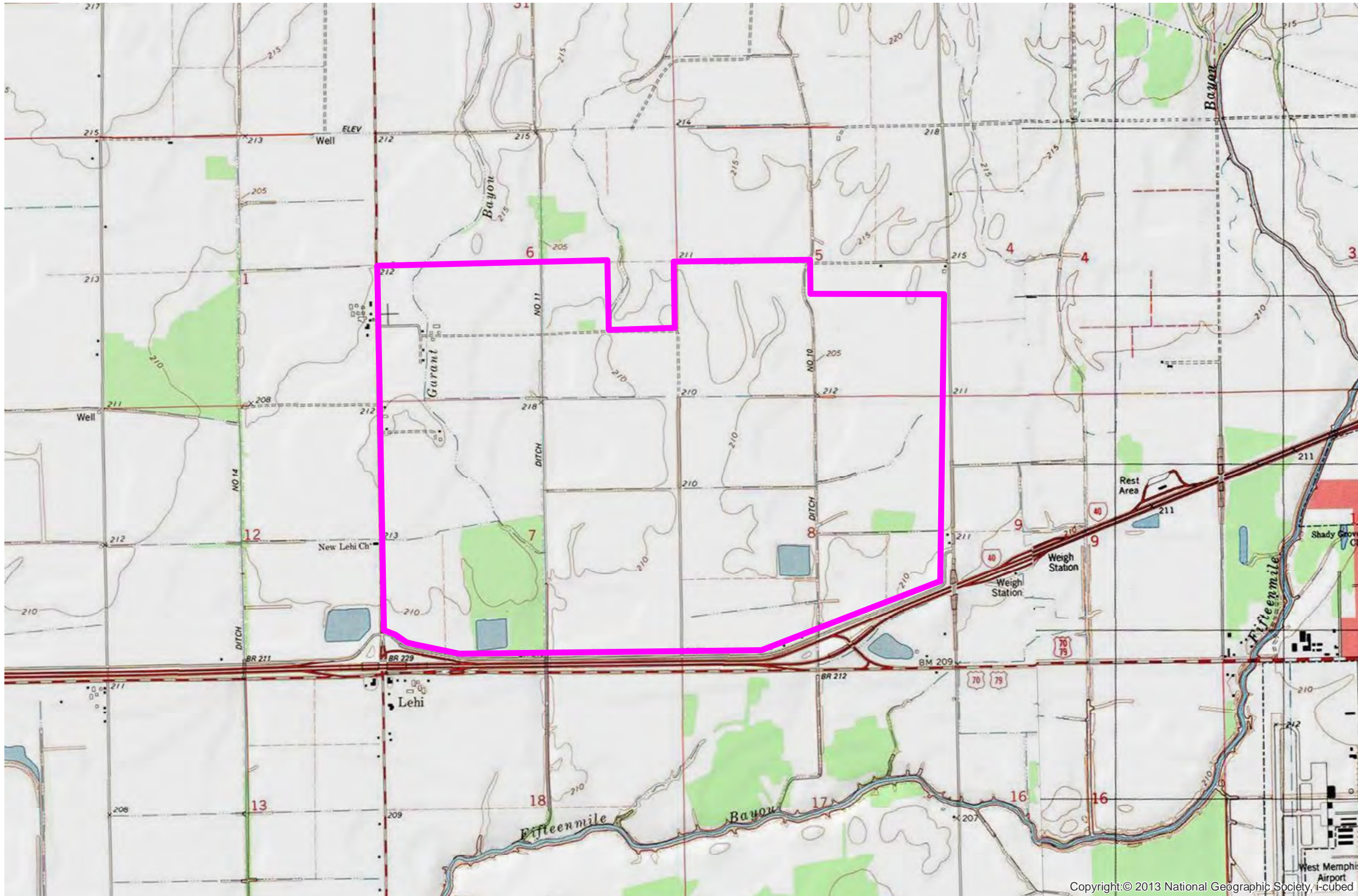
SOURCE

Source: 2013 National Geographic Society, i-cubed

Created by: RPG
Date: 8/2018

0 2,000 4,000 Feet

0 480 960 Meters





**BUSINESS
DEVELOPMENT**
ARKANSAS

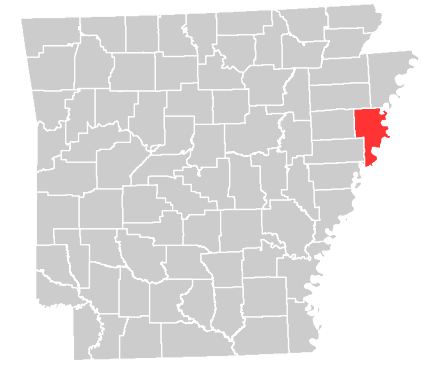
West Memphis I-40 Megasite Elevation Contours

425 West Capitol Ave, Suite 2700
Little Rock, AR 72201

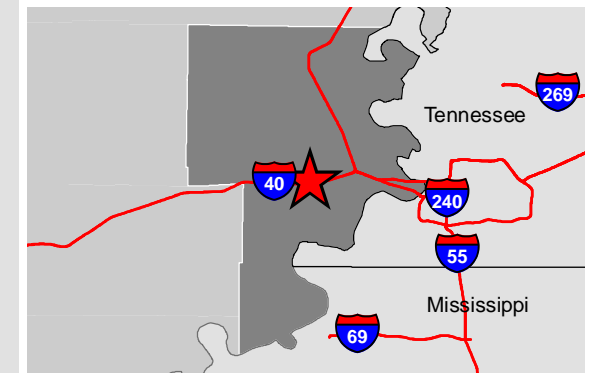
Phone: 1-888-301-5861

goentergy.com/ar

CRITTENDEN COUNTY



VICINITY MAP



LEGEND

Property Boundary

Elevation Contours (ft.)

- 185 ft
- 190 ft
- 195 ft
- 200 ft
- 205 ft
- 210 ft

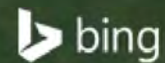
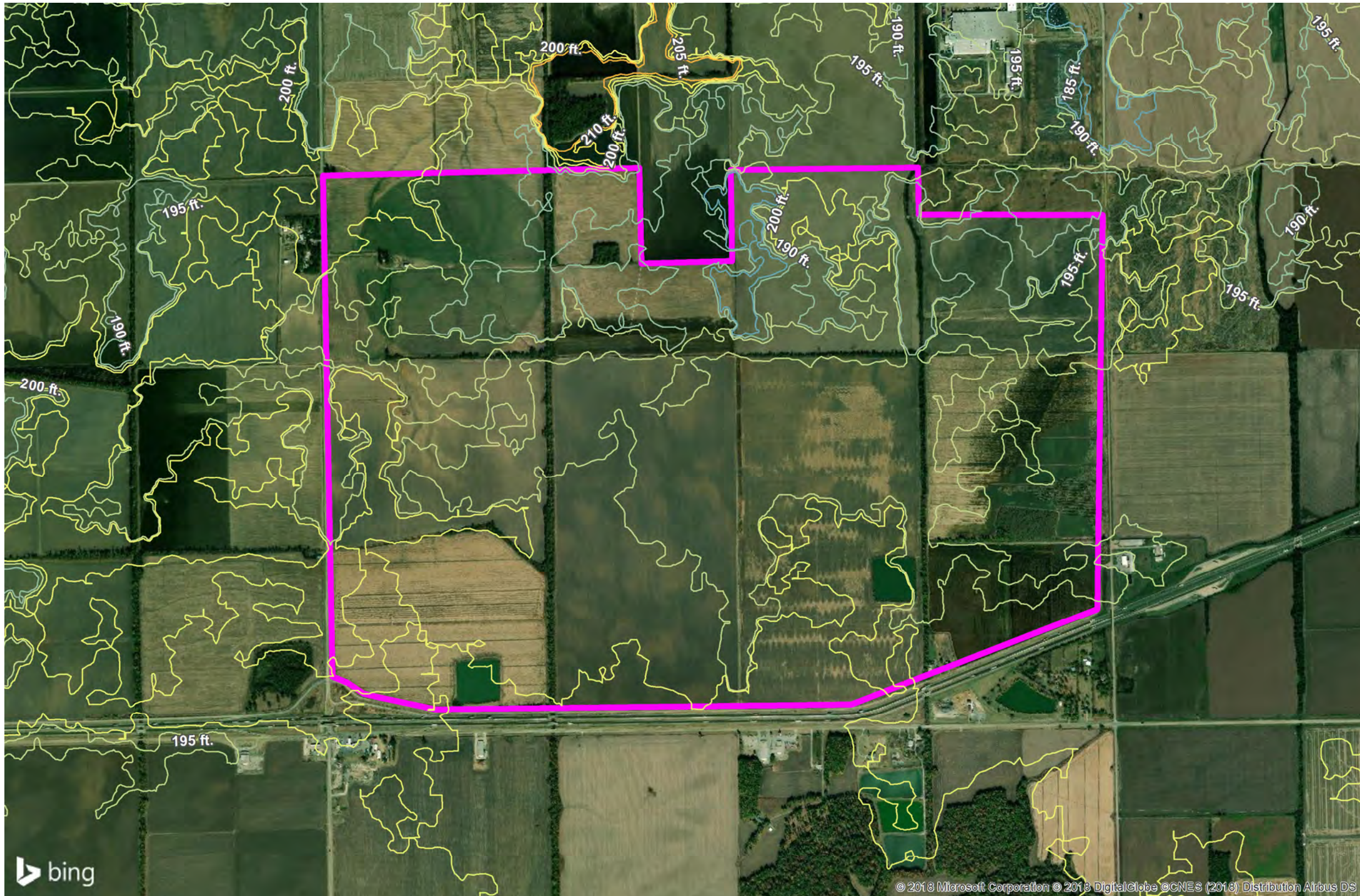
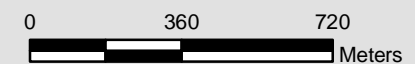
NOTE

These drawings are provided merely to assist in economic development efforts. The Entergy Companies make no representations or warranties whatsoever regarding the accuracy or completeness of any information contained herein nor the condition or suitability of any properties. Users should direct inquiries about any property to the listing broker for that property.

SOURCE

Source: Elevation contours derived from DEM data from USDA/NRCS - National Geospatial Center of Excellence

Created by: RPG
Date: 8/2018





BUSINESS DEVELOPMENT ARKANSAS

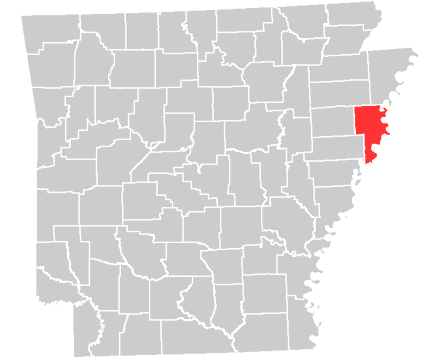
West Memphis I-40 Megasite FEMA Flood Map

425 West Capitol Ave, Suite 2700 Little Rock, AR 72201

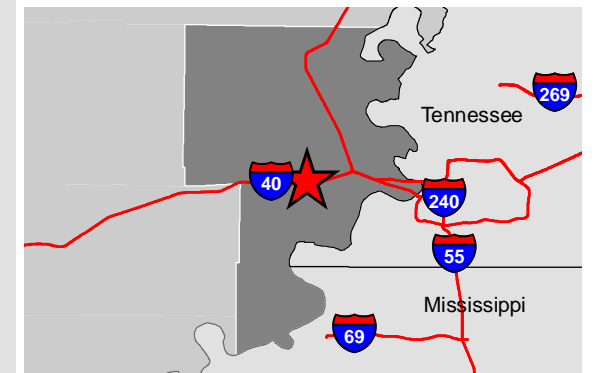
Phone: 1-888-301-5861

goentergy.com/ar

CRITTENDEN COUNTY



VICINITY MAP



LEGEND

- Property Boundary
- Base Flood Elevation
- Flood Hazards**
 - A,
 - AE,
 - X, 0.2 PCT ANNUAL CHANCE FLOOD

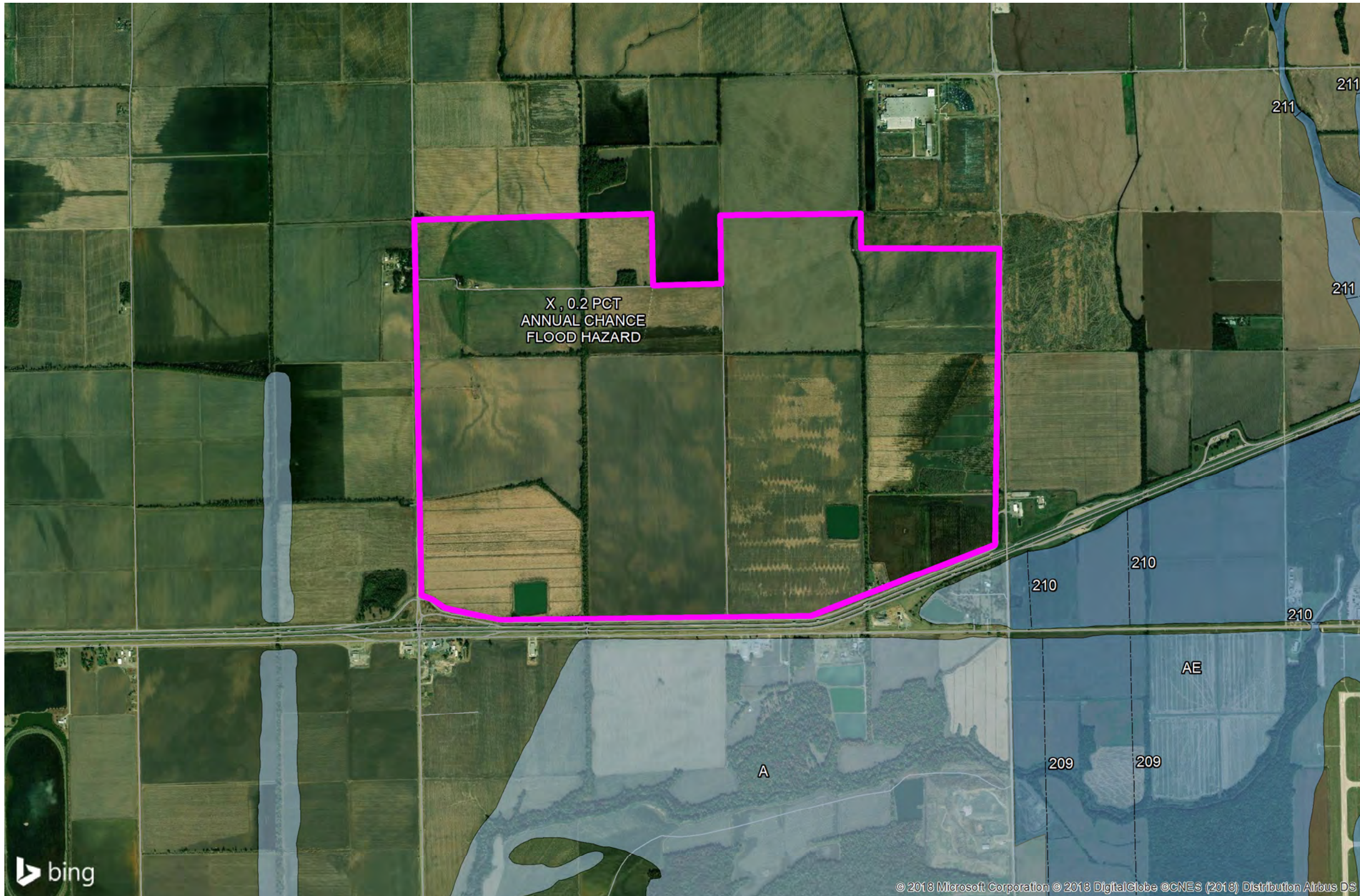
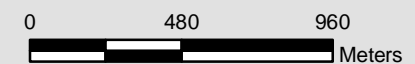
NOTE

These drawings are provided merely to assist in economic development efforts. The Entergy Companies make no representations or warranties whatsoever regarding the accuracy or completeness of any information contained herein nor the condition or suitability of any properties. Users should direct inquiries about any property to the listing broker for that property.

SOURCE

Source: Elevation contours derived from DEM data from USDA/NRCS - National Geospatial Center of Excellence

Created by: RPG Date: 8/2018





Legend

Site Boundary

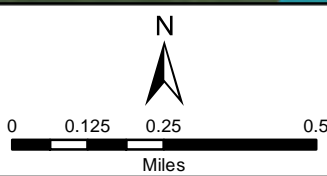
Flood Zone Type

Zone A: 100 Year Flood Area

Zone X: Area of Minimal Flood Hazard

T:\GIS\Franklin_Work\Ornl-40_Megasite\FEMA_Map.mxd

Service Layer Credits: Esri, HERE, DeLorme, MapmyIndia, © OpenStreetMap contributors
 Source: Esri, DigitalGlobe, GeoEye, Earthstar Geographics, CNES/Airbus DS, USDA, USGS, AeroGRID, IGN, and the GIS User Community



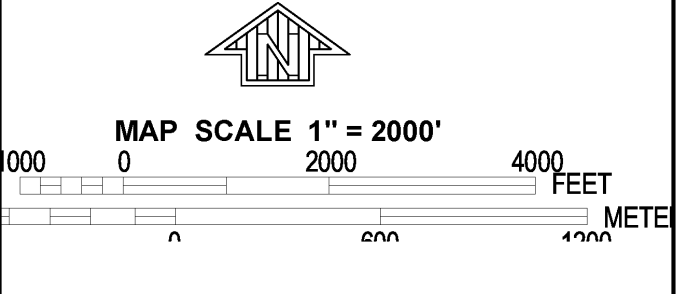
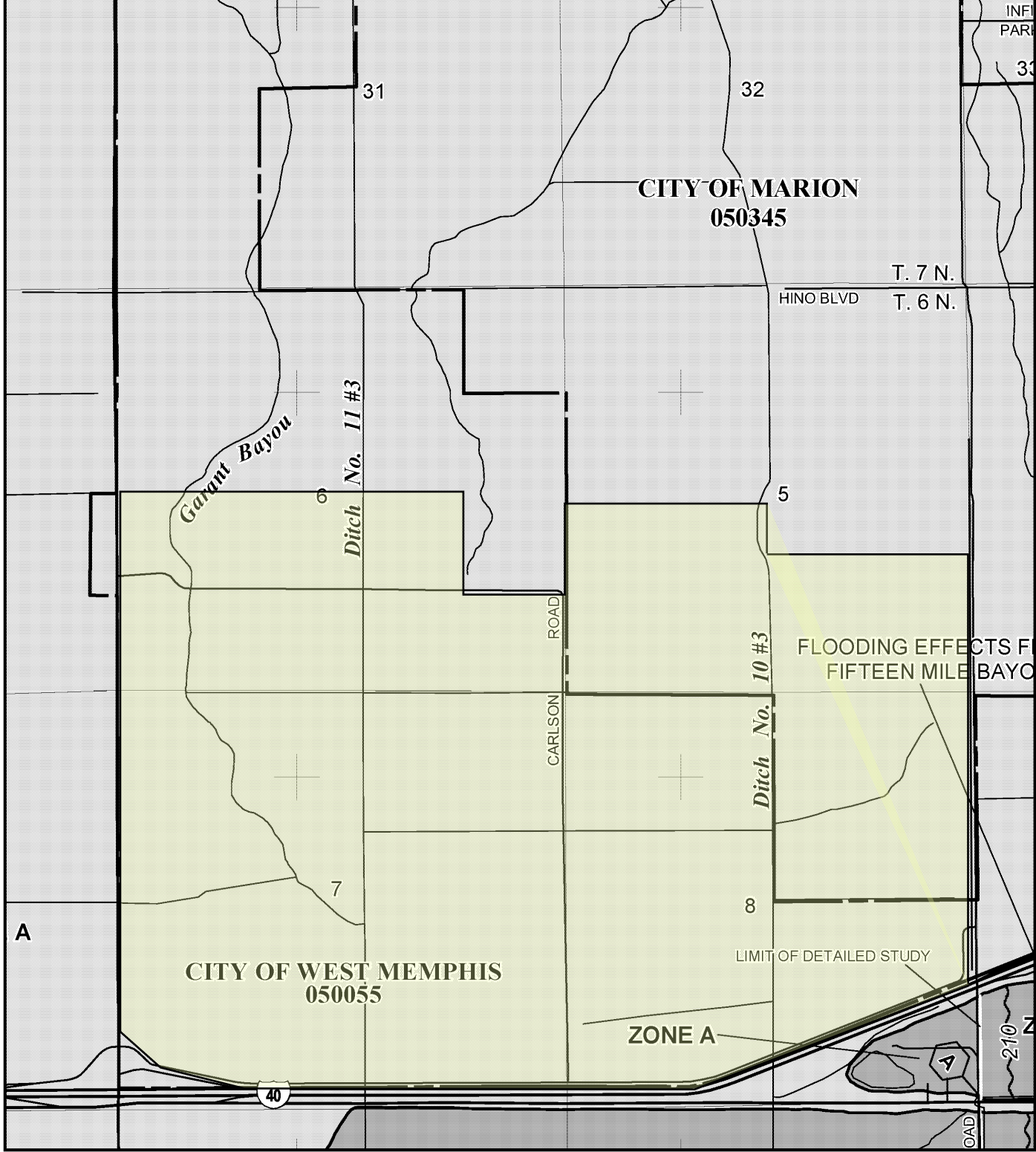
FILE NUMBER	
DESIGNED BY	MBE
DRAWN BY	MBE
CHECKED BY	

AECOM

1000 Corporate Centre Dr
 Suite 250
 Franklin, TN 37067

West Memphis I-40 Megasite
 FEMA Flood Zone Map

PROJECT NUMBER	60572497
DATE	April, 2018
FIGURE NUMBER	2



INFP PANEL 0325E

NATIONAL FLOOD INSURANCE PROGRAM

FIRM
FLOOD INSURANCE RATE MAP
CRITTENDEN COUNTY,
ARKANSAS
AND INCORPORATED AREAS

PANEL 325 OF 600
 (SEE MAP INDEX FOR FIRM PANEL LAYOUT)

CONTAINS:

COMMUNITY	NUMBER	PANEL	SUFFIX
CRITTENDEN COUNTY	050429	0325	E
CRAWFORDSVILLE, TOWN OF	050317	0325	E
MARION, CITY OF	050345	0325	E
WEST MEMPHIS, CITY OF	050055	0325	E

Notice to User: The **Map Number** shown below should be used when placing map orders; the **Community Number** shown above should be used on insurance applications for the subject community.



MAP NUMBER
05035C0325E
EFFECTIVE DATE
MAY 3, 2011

Federal Emergency Management Agency

This is an official copy of a portion of the above referenced flood map. It was extracted using F-MIT On-Line. This map does not reflect changes or amendments which may have been made subsequent to the date on the title block. For the latest product information about National Flood Insurance Program flood maps check the FEMA Flood Map Store at www.msc.fema.gov



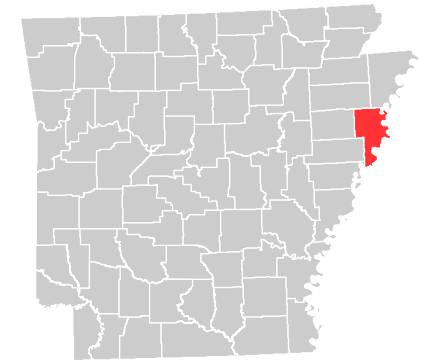
West Memphis I-40 Megasite National Wetlands Inventory

425 West Capitol Ave, Suite 2700 Little Rock, AR 72201

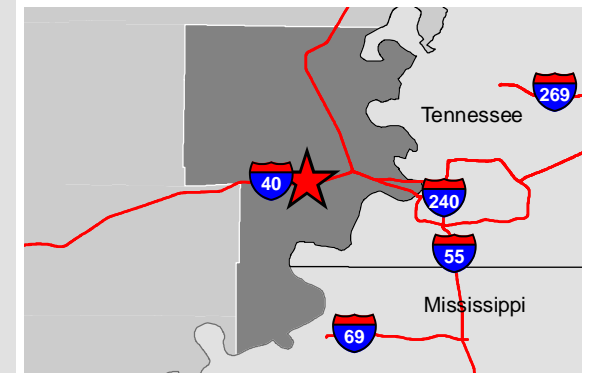
Phone: 1-888-301-5861

goentergy.com/ar

CRITTENDEN COUNTY



VICINITY MAP



LEGEND

- Property Boundary
- Freshwater Forested/Shrub Wetland
- Freshwater Pond
- Riverine

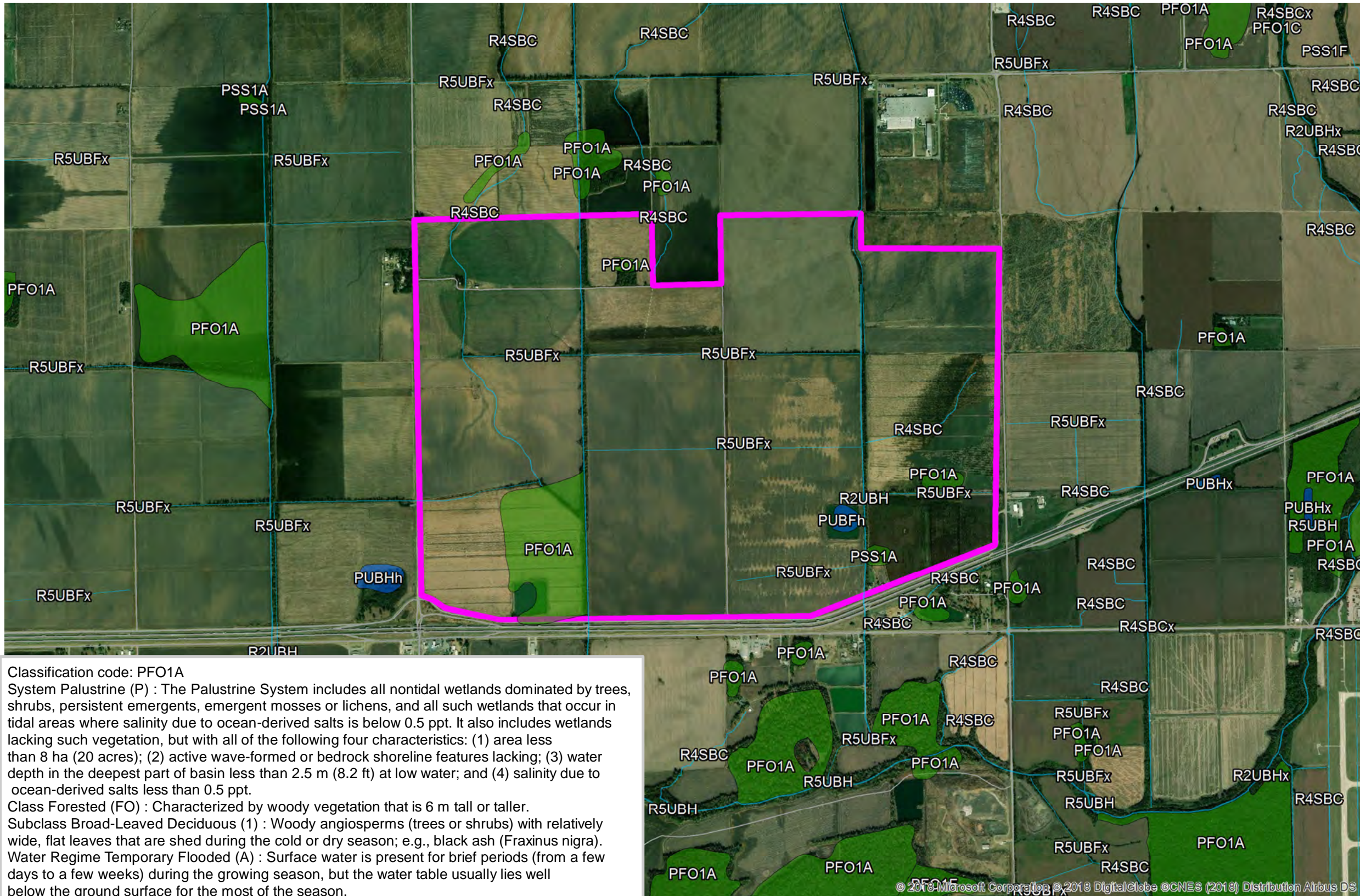
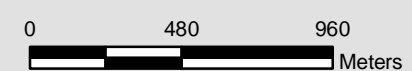
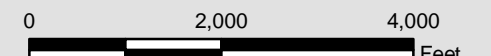
NOTE

These drawings are provided merely to assist in economic development efforts. The Entergy Companies make no representations or warranties whatsoever regarding the accuracy or completeness of any information contained herein nor the condition or suitability of any properties. Users should direct inquiries about any property to the listing broker for that property.

SOURCE

Source: U.S. Fish and Wildlife Service, Title: HU8_08020203, Download Date: 8/13/2018.

Created by: RPG Date: 8/2018



Classification code: PFO1A
 System Palustrine (P) : The Palustrine System includes all nontidal wetlands dominated by trees, shrubs, persistent emergents, emergent mosses or lichens, and all such wetlands that occur in tidal areas where salinity due to ocean-derived salts is below 0.5 ppt. It also includes wetlands lacking such vegetation, but with all of the following four characteristics: (1) area less than 8 ha (20 acres); (2) active wave-formed or bedrock shoreline features lacking; (3) water depth in the deepest part of basin less than 2.5 m (8.2 ft) at low water; and (4) salinity due to ocean-derived salts less than 0.5 ppt.
 Class Forested (FO) : Characterized by woody vegetation that is 6 m tall or taller.
 Subclass Broad-Leaved Deciduous (1) : Woody angiosperms (trees or shrubs) with relatively wide, flat leaves that are shed during the cold or dry season; e.g., black ash (*Fraxinus nigra*).
 Water Regime Temporary Flooded (A) : Surface water is present for brief periods (from a few days to a few weeks) during the growing season, but the water table usually lies well below the ground surface for the most of the season.

Figure 5

SITE FEATURES

REVISION NUMBER: REV. 0	DRAWN BY: BENJAMIN.SADLER	REVIEWED BY: JIM.ORR
----------------------------	------------------------------	-------------------------

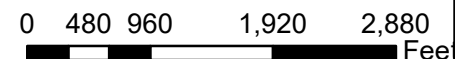
DEPT:
IMPACT ASSESSMENT & PERMITTING

CITY OF WEST MEMPHIS

DATE: 11/5/2020 APPROVED BY:

Legend

- Ditch
- Stream
- Pond
- Site Boundary
- Wetland
- Wooded Lot



Source: Esri, Maxar, GeoEye, Earthstar Geographics, CNES/Airbus DS, USDA, USGS, AeroGRID, IGN, and the GIS User Community, Esri, HERE, Garmin, © OpenStreetMap contributors, and the GIS user community





**BUSINESS
DEVELOPMENT**
ARKANSAS

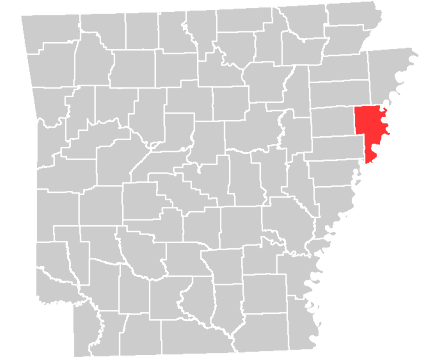
West Memphis I-40 Megasite Pipeline Infrastructure

425 West Capitol Ave, Suite 2700
Little Rock, AR 72201

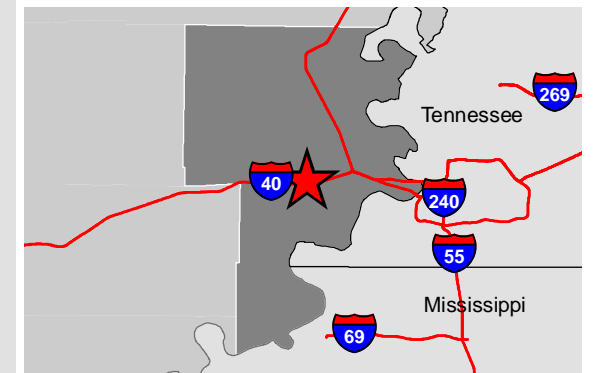
Phone: 1-888-301-5861

goentergy.com/ar

CRITTENDEN COUNTY



VICINITY MAP



LEGEND

- Property
- COMMODITY**
- Natural Gas
- Refined Products

NOTE

These drawings are provided merely to assist in economic development efforts. The Entergy Companies make no representations or warranties whatsoever regarding the accuracy or completeness of any information contained herein nor the condition or suitability of any properties. Users should direct inquiries about any property to the listing broker for that property.

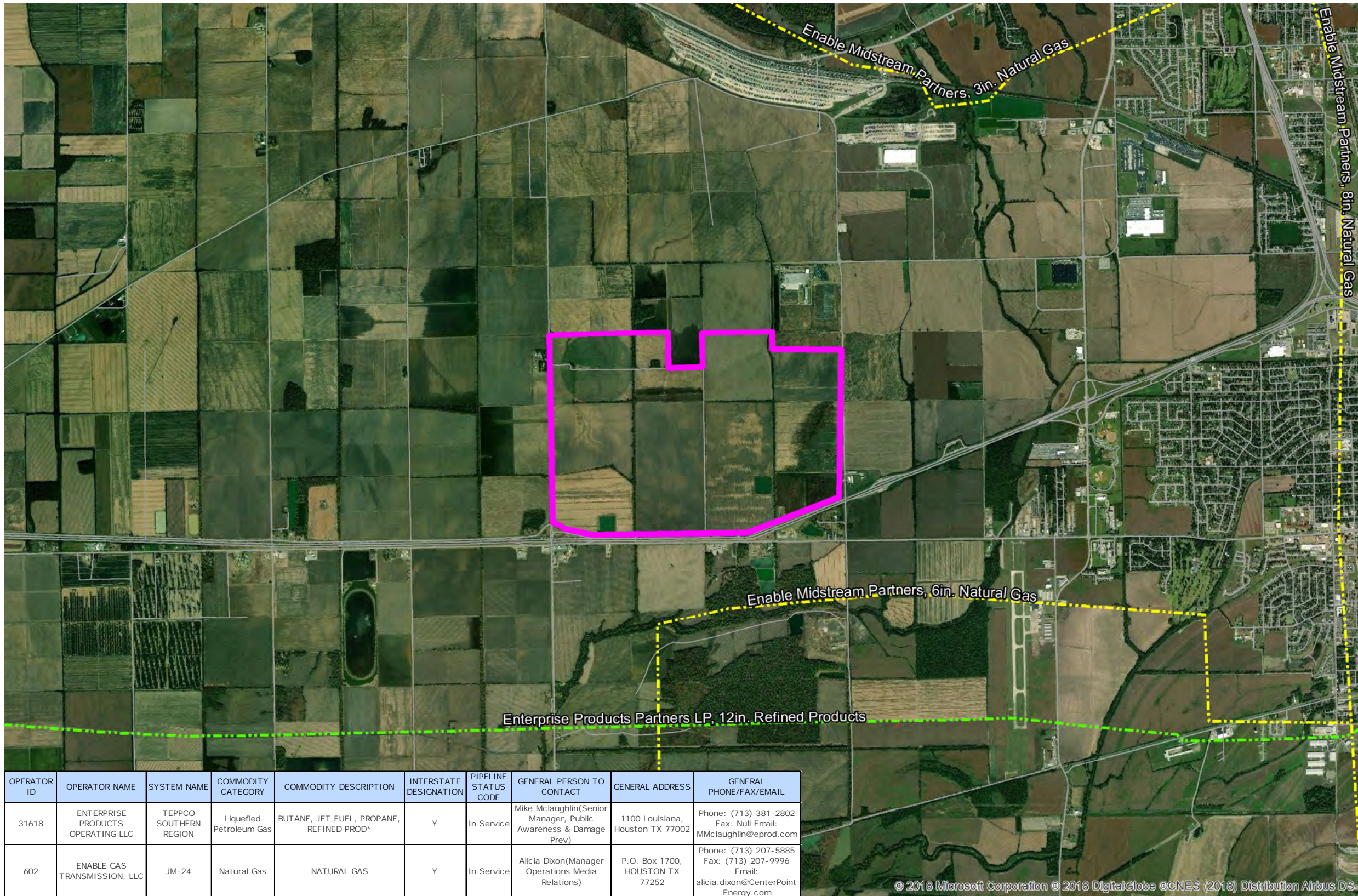
SOURCE

Source:
Chart: National Pipeline Mapping System Online Public
Map Viewer,
Pipeline Location: Pennwel Pipeline Data, 2017

Created by: RPG
Date: 8/2018

0 4,000 8,000
Feet

0 960 1,920
Meters



OPERATOR ID	OPERATOR NAME	SYSTEM NAME	COMMODITY CATEGORY	COMMODITY DESCRIPTION	INTERSTATE DESIGNATION	PIPELINE STATUS CODE	GENERAL PERSON TO CONTACT	GENERAL ADDRESS	GENERAL PHONE/FAX/EMAIL
31618	ENTERPRISE PRODUCTS OPERATING LLC	TEPPCO SOUTHERN REGION	Liquefied Petroleum Gas	BUTANE, JET FUEL, PROPANE, REFINED PROD*	Y	In Service	Mike McLaughlin(Senior Manager, Public Awareness & Damage Prev)	1100 Louisiana, Houston TX 77002	Phone: (713) 381-2802 Fax: Null Email: MMclaughlin@eprod.com
602	ENABLE GAS TRANSMISSION, LLC	JM-24	Natural Gas	NATURAL GAS	Y	In Service	Alicia Dixon(Manager Operations Media Relations)	P.O. Box 1700, HOUSTON TX 77252	Phone: (713) 207-5885 Fax: (713) 207-9996 Email: alicia.dixon@CenterPoint Energy.com



BUSINESS DEVELOPMENT
ARKANSAS

West Memphis I-40 Megasite

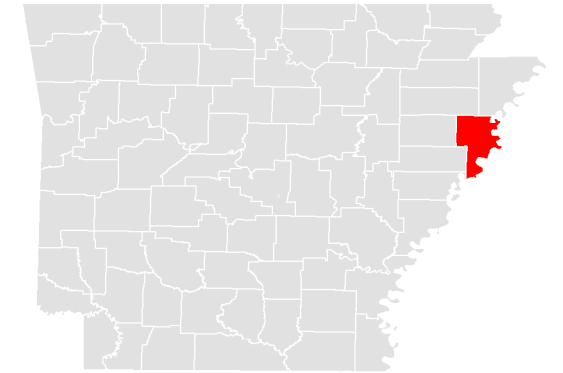
Entergy Electrical Infrastructure

425 West Capitol Ave, Suite 2700
Little Rock, AR 72201

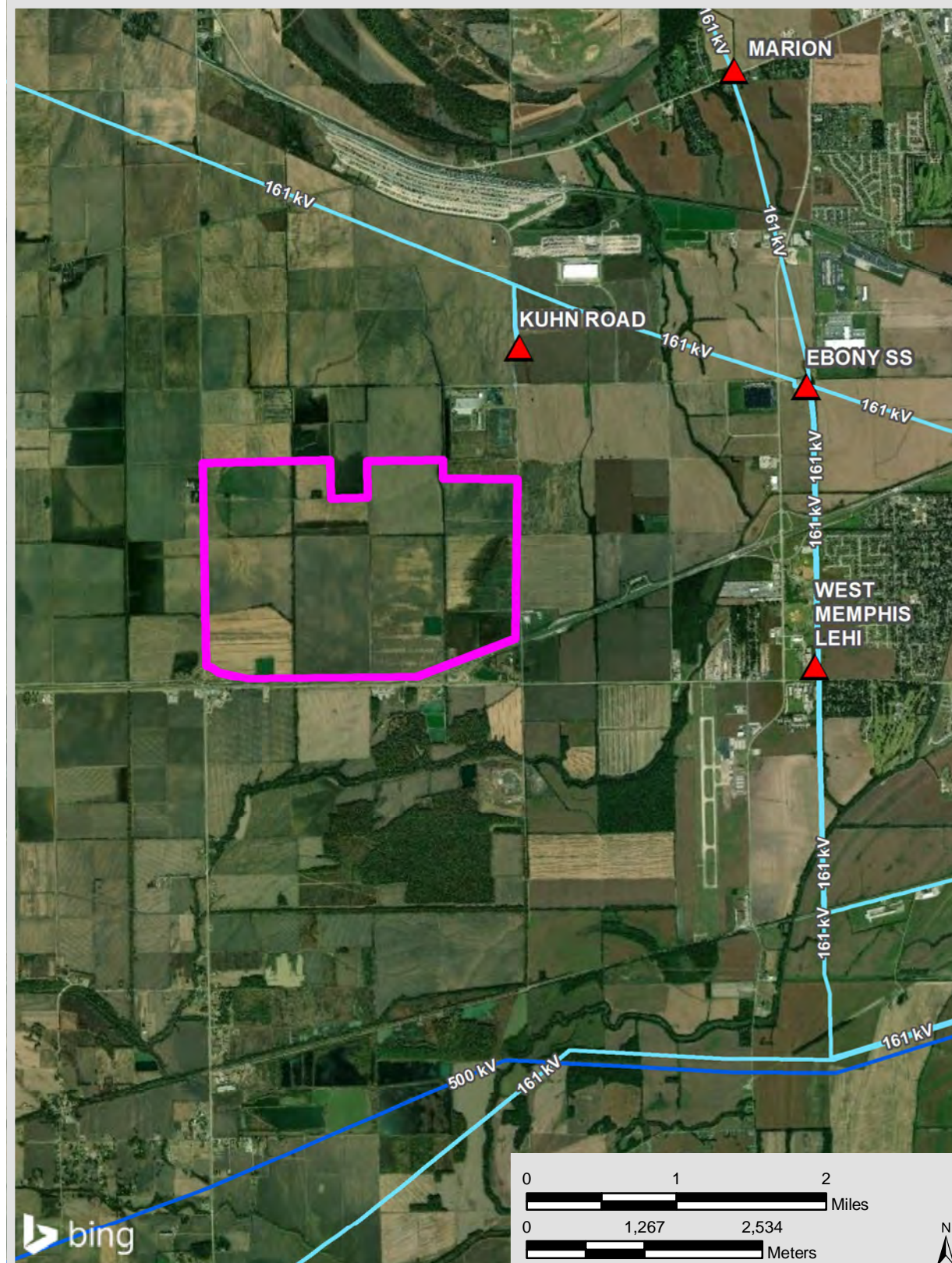
Phone: 1-888-301-5861

goentergy.com/ar

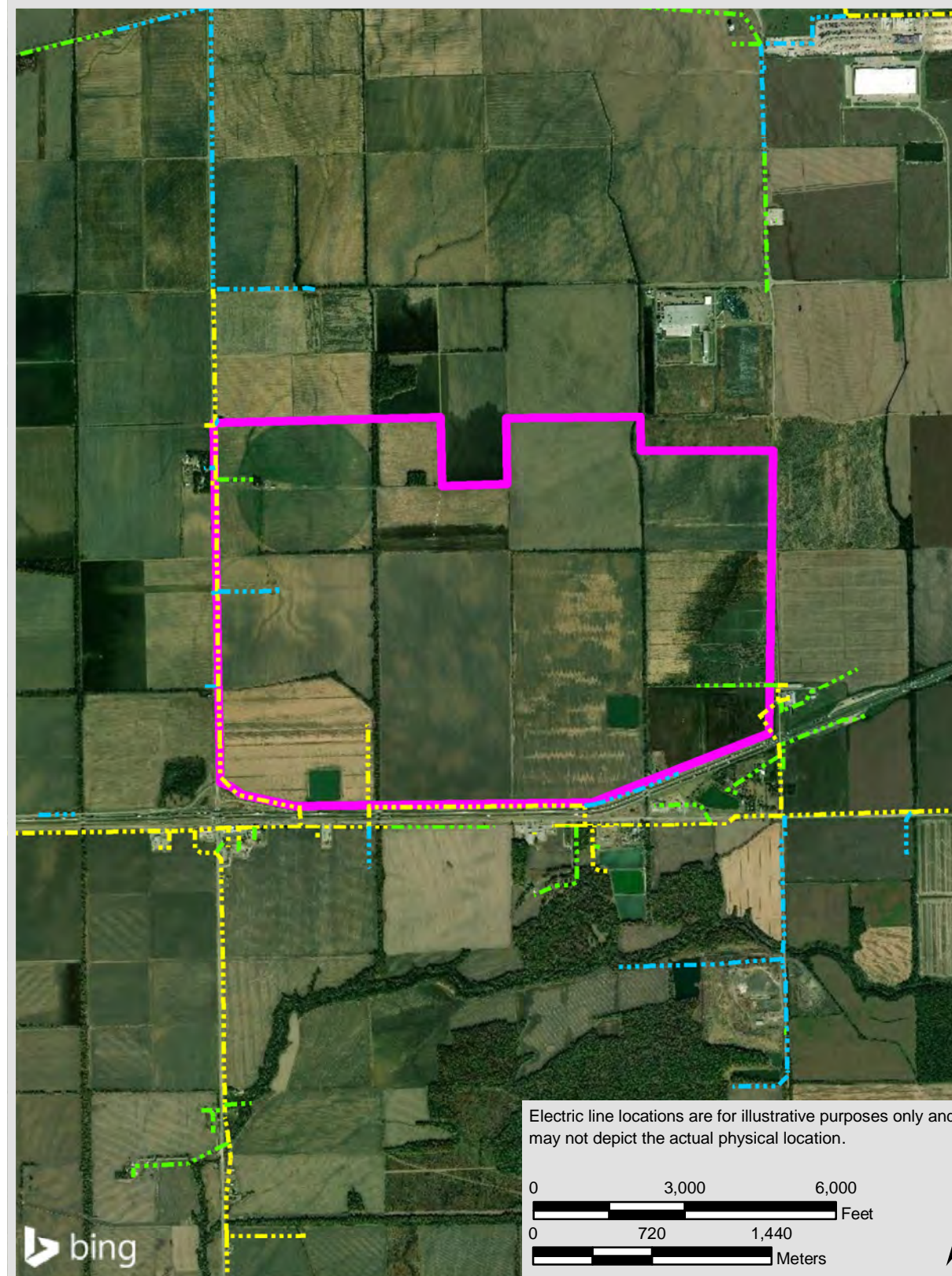
CRITTENDEN COUNTY



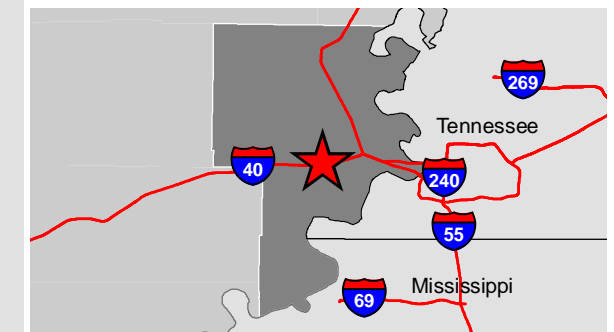
TRANSMISSION



DISTRIBUTION



VICINITY



LEGEND

Property Boundary

Transmission

Substations

500 kV

161 kV

Distribution

Phase, Voltage

Single Phase, 13.8 kV

Two Phase, 13.8 kV

Three Phase, 13.8 kV

NOTE

These drawings are provided merely to assist in economic development efforts. The Entergy Companies make no representations or warranties whatsoever regarding the accuracy or completeness of any information contained herein nor the condition or suitability of any properties. Users should direct inquiries about any property to the listing broker for that property.

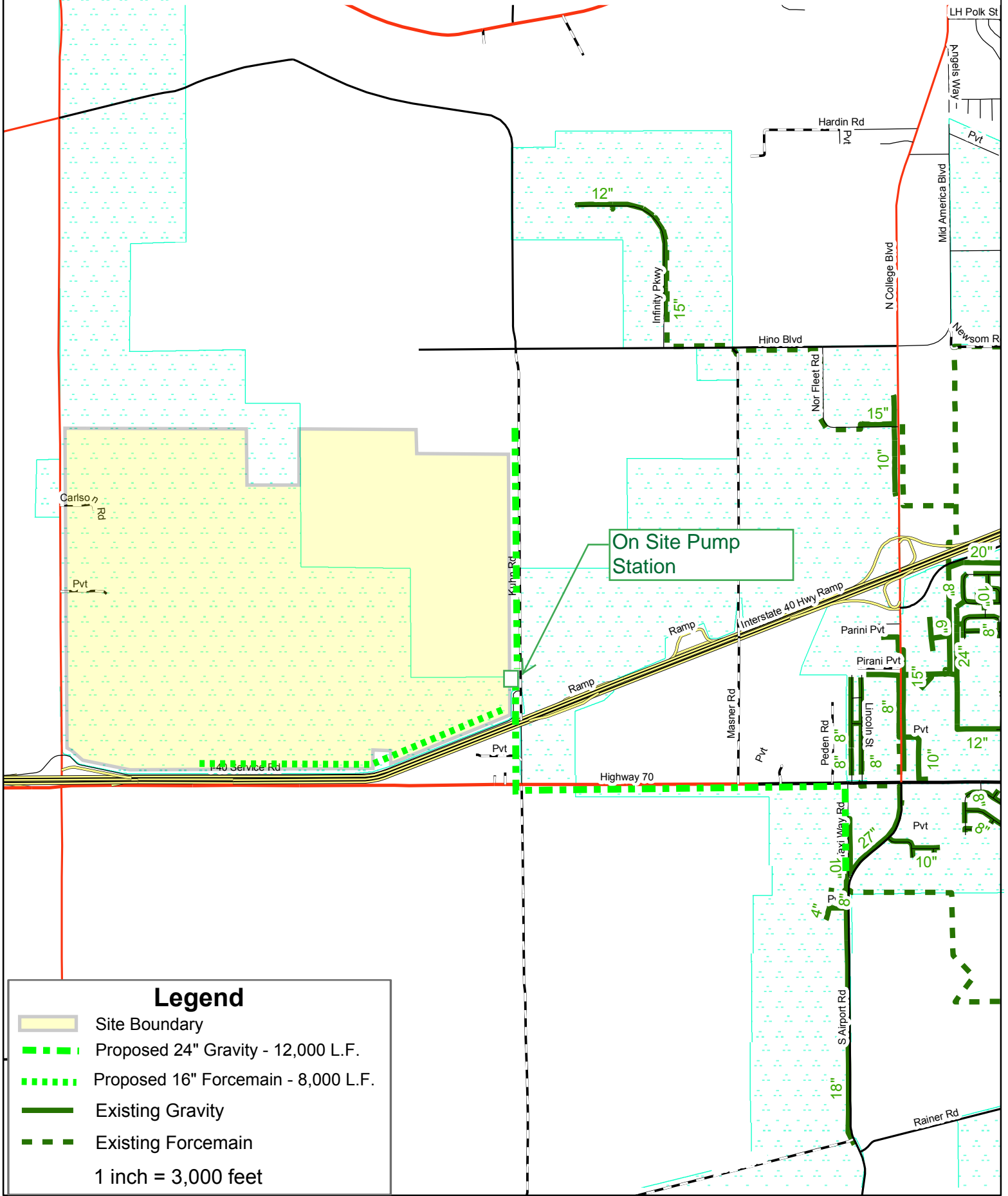
SOURCE

Service Layer Credits: © 2018 Microsoft Corporation © 2018 DigitalGlobe ©CNES (2018) Distribution Airbus DS

Source: Transmission-Entergy, Distribution-Entergy, 2018

Created by: RPG
Date: 08/2018

West Memphis I-40 Megaside Proposed Sewer Solution

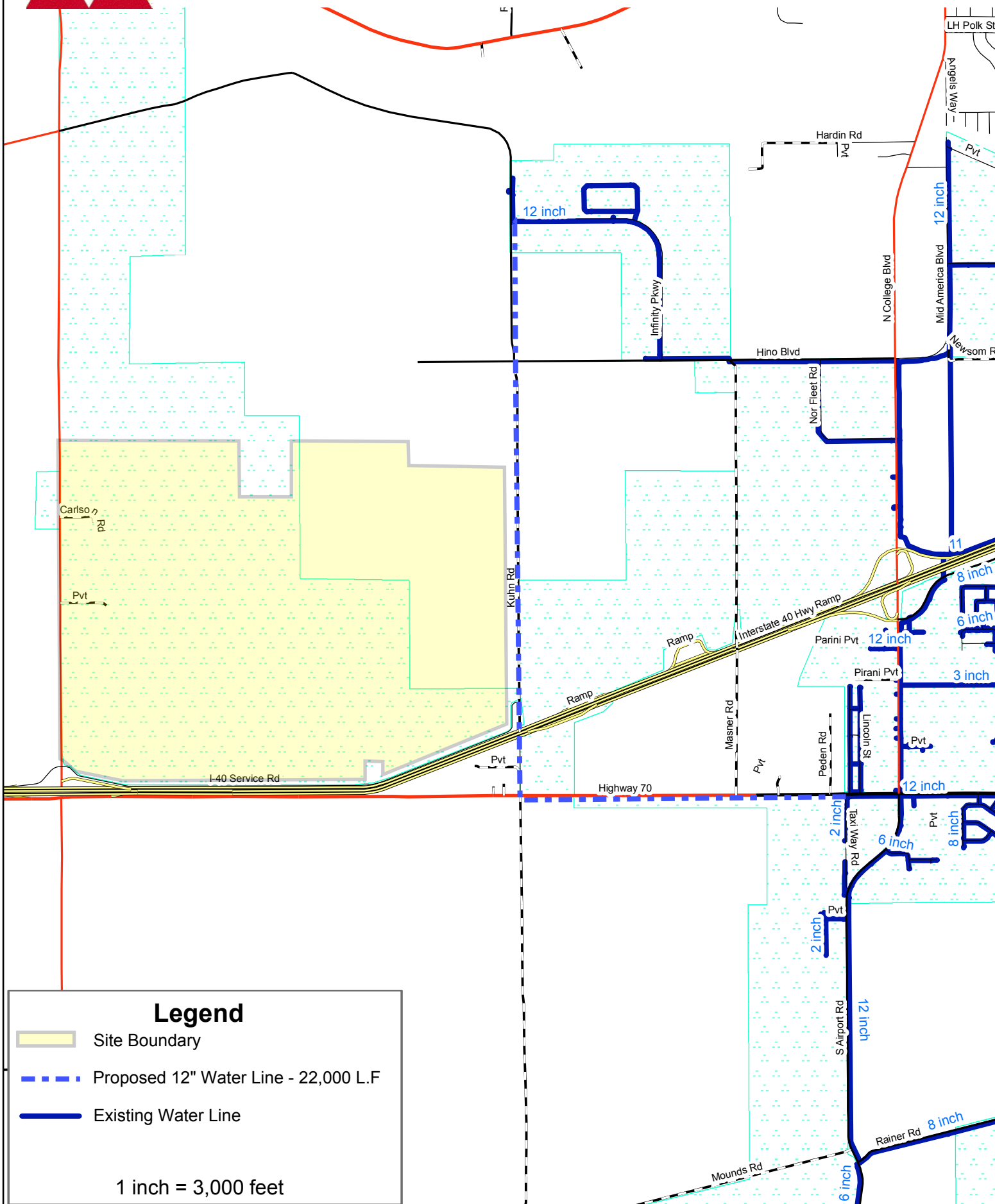


Legend

- Site Boundary
- Proposed 24" Gravity - 12,000 L.F.
- Proposed 16" Forcemain - 8,000 L.F.
- Existing Gravity
- Existing Forcemain

1 inch = 3,000 feet

West Memphis I-40 Megasite Proposed Water Solution





West Memphis I-40 Megaside

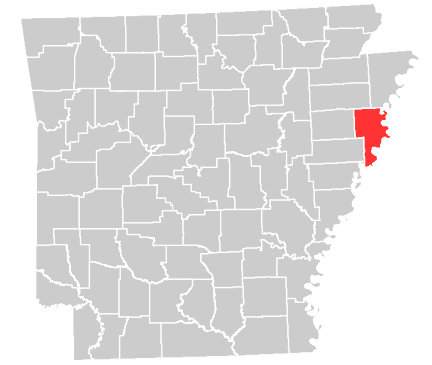
Surrounding Use

425 West Capitol Ave, Suite 2700
Little Rock, AR 72201

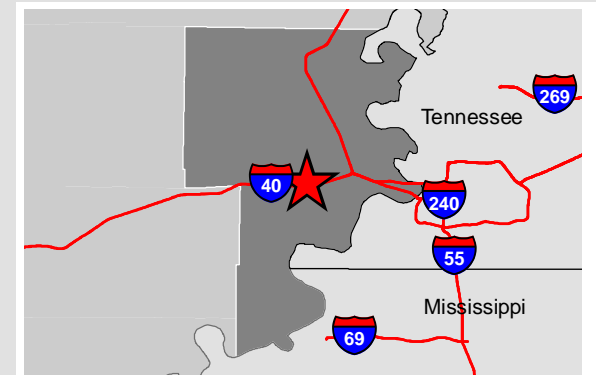
Phone: 1-888-301-5861

goentergy.com/ar

CRITTENDEN COUNTY



VICINITY MAP



LEGEND

- Property Boundary
- City of Marion
- City of West Memphis
- Rail
- Surrounding Use
- Ports

NOTE

These drawings are provided merely to assist in economic development efforts. The Entergy Companies make no representations or warranties whatsoever regarding the accuracy or completeness of any information contained herein nor the condition or suitability of any properties. Users should direct inquiries about any property to the listing broker for that property.

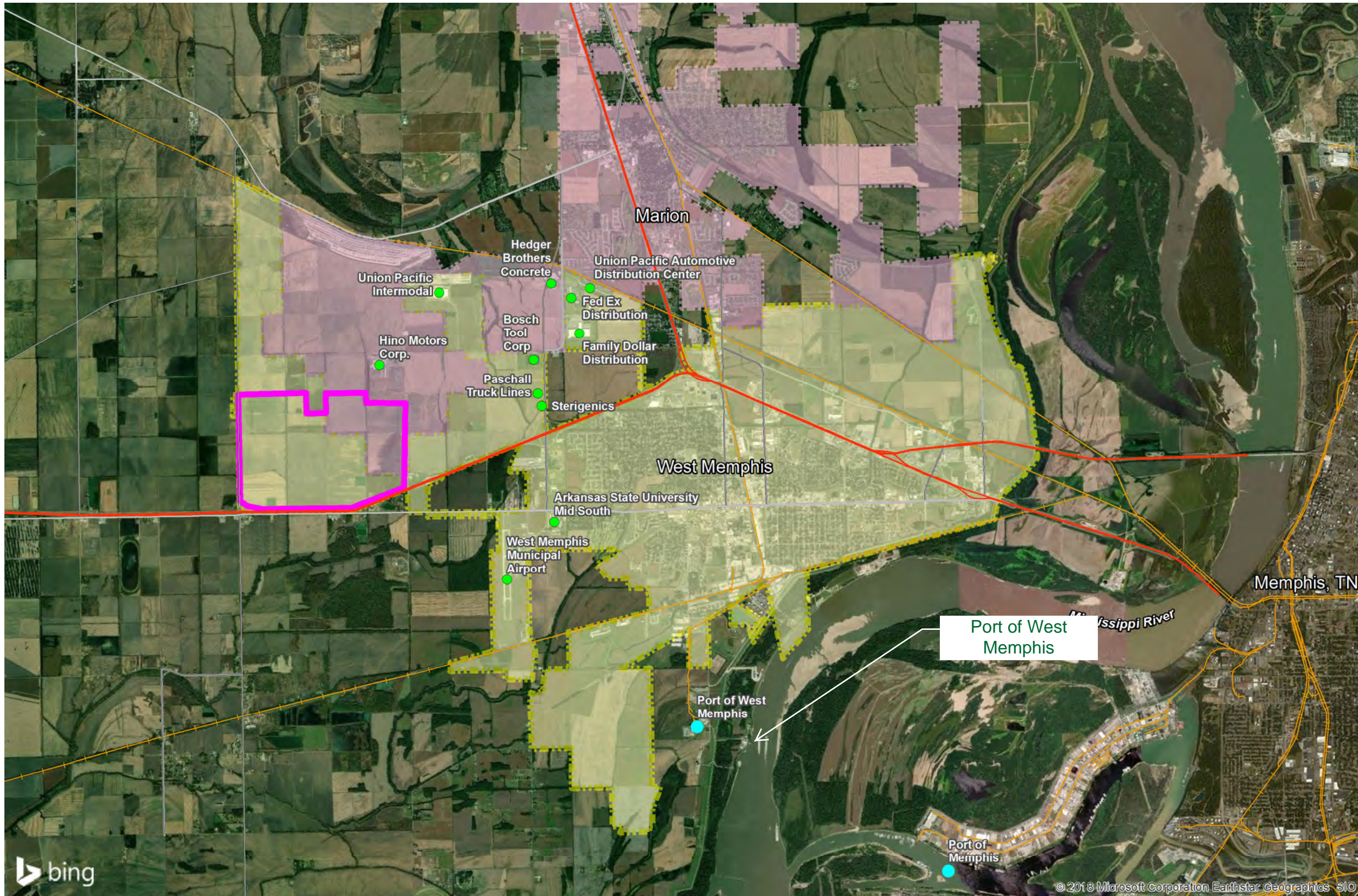
SOURCE

Source:
City Boundary, Tiger 2016
Ports: US Army Corps of Engineers and LOSCO
Rail: Rail_BureauOfTransportationStats_2014

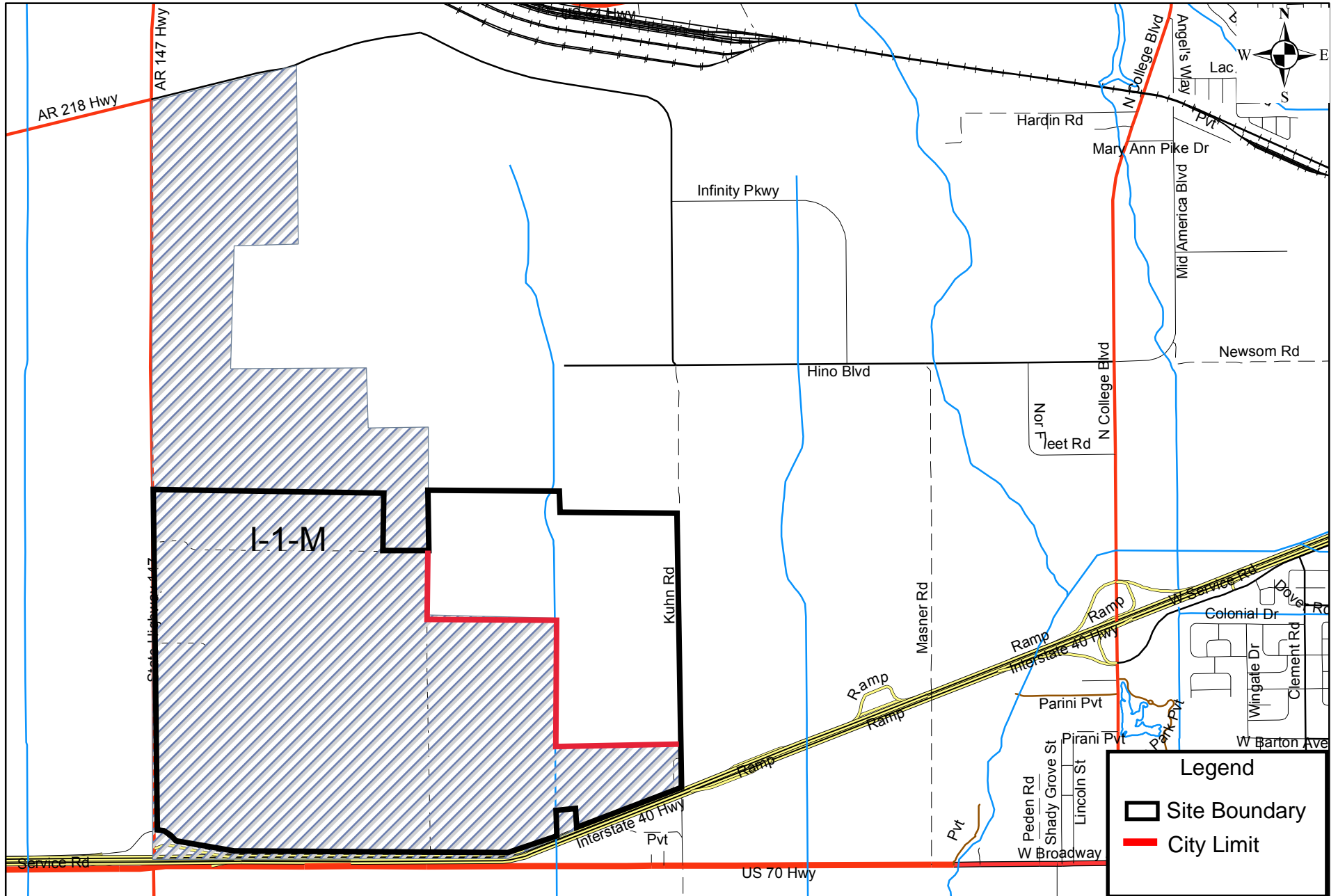
Created by: RPG
Date: 10/2018

0 6,000 12,000
Feet

0 1,440 2,880
Meters

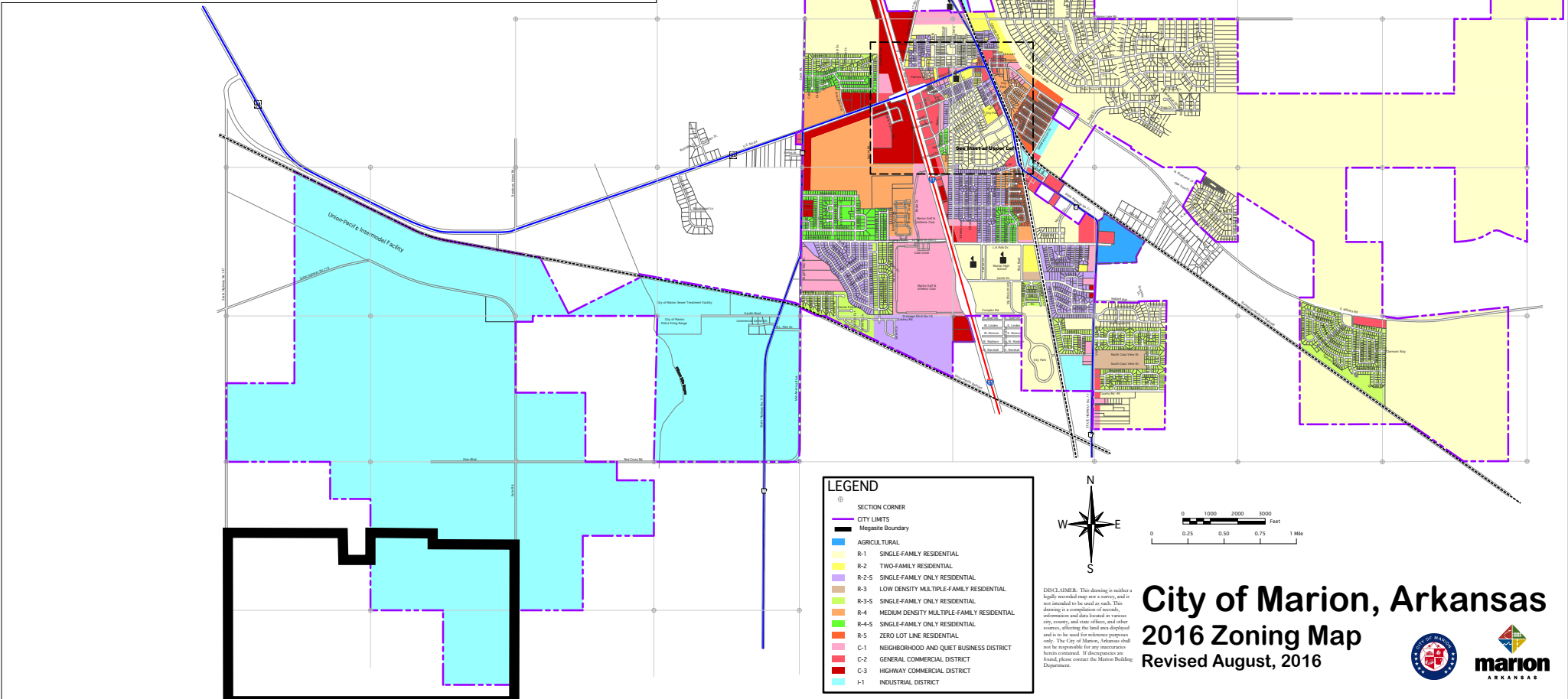
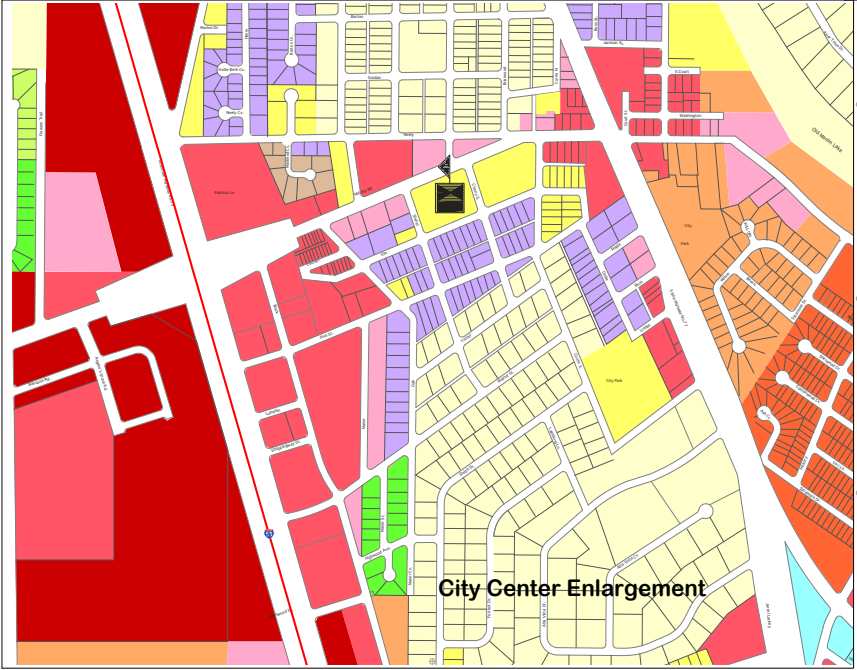


City of West Memphis Zoning Map: I-1-M District



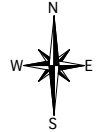
MAP DATE 04/13/2018

PREPARED BY CITY OF WEST MEMPHIS PLANNING AND DEVELOPMENT DEPARTMENT



LEGEND

- SECTION CORNER
- CITY LIMITS
- Megastate Boundary
- AGRICULTURAL
- R-1 SINGLE-FAMILY RESIDENTIAL
- R-2 TWO-FAMILY RESIDENTIAL
- R-2-S SINGLE-FAMILY ONLY RESIDENTIAL
- R-3 LOW DENSITY MULTIPLE-FAMILY RESIDENTIAL
- R-3-S SINGLE-FAMILY ONLY RESIDENTIAL
- R-4 MEDIUM DENSITY MULTIPLE-FAMILY RESIDENTIAL
- R-4-S SINGLE-FAMILY ONLY RESIDENTIAL
- R-5 ZERO LOT LINE RESIDENTIAL
- C-1 NEIGHBORHOOD AND QUIET BUSINESS DISTRICT
- C-2 GENERAL COMMERCIAL DISTRICT
- C-3 HIGHWAY COMMERCIAL DISTRICT
- I-1 INDUSTRIAL DISTRICT



DISCLAIMER: This drawing is neither a legally recorded map nor a survey, and is not intended to be used as such. This drawing is a compilation of public information and data located on various city, county, and state offices, and other sources, affecting the land area displayed and is to be used for reference purposes only. The City of Marion, Arkansas shall not be responsible for any inaccuracies herein contained. If discrepancies are found, please contact the Marion Building Department.

