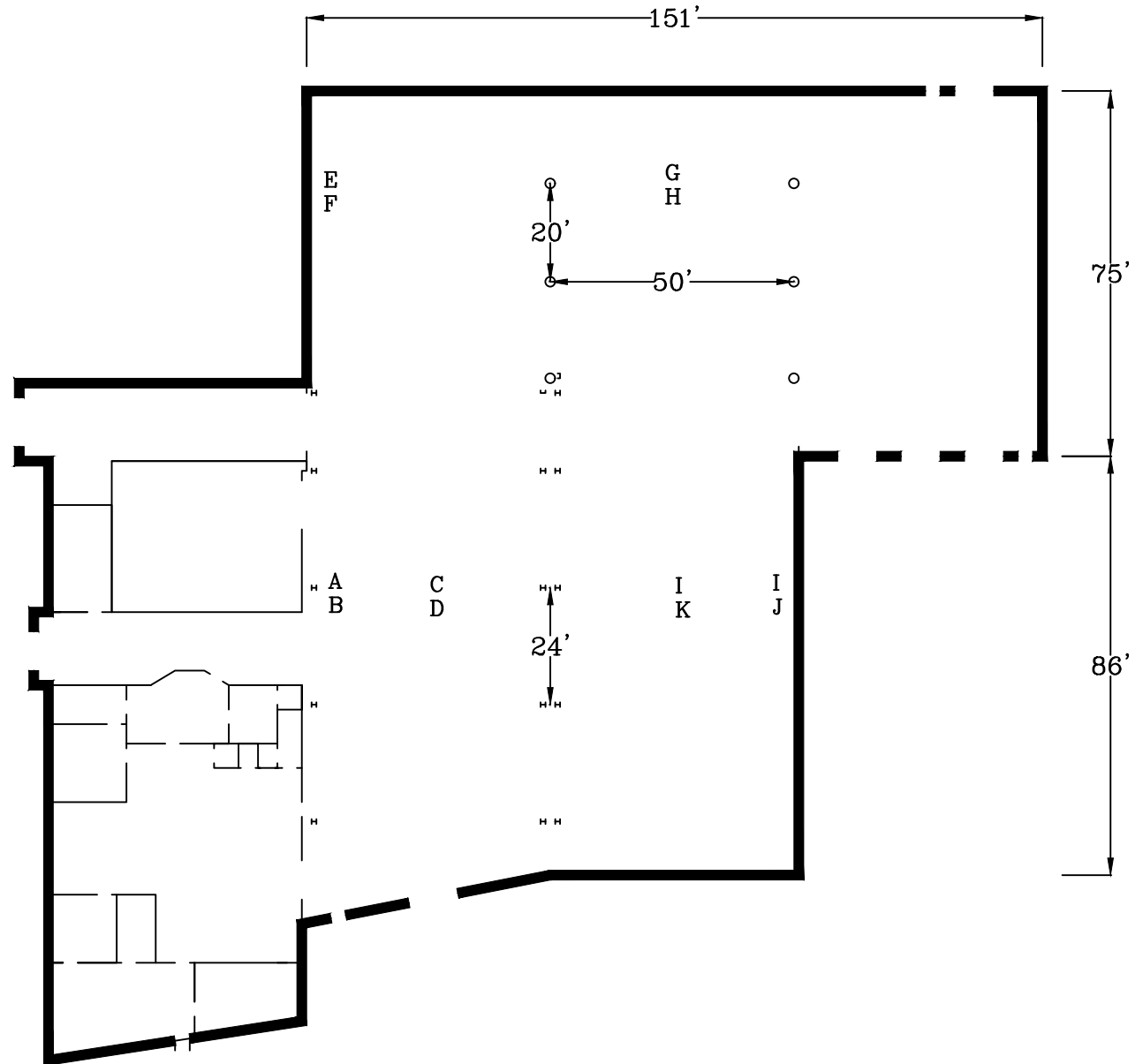
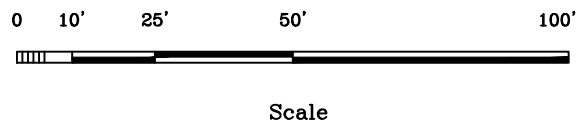


- A 18'6" under beam
- B 19'5" between beams
- C 18'7" under beam
- D 21'4" between beams
- E 17'11" under beam
- F 20' between beams
- G 24' under beam
- H 25'5" between beams
- I 14'7" under beam
- J 16' between beams
- K 17'3" between beams



For further information contact:
Arkansas Economic Development Commission
(501)-682-7311



Note: This drawing was prepared by the Arkansas Economic Development Commission from information deemed reliable. Verification is recommended prior to lease or purchase.