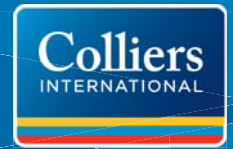


FOR SALE

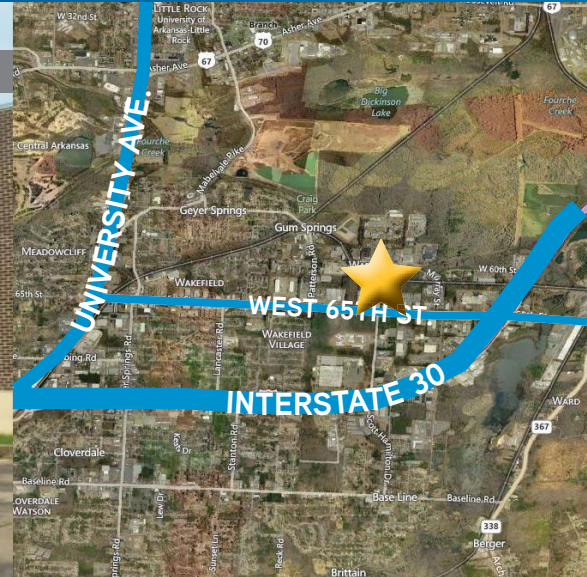
# Industrial Properties



6200 & 6210 DIVIDEND DRIVE, LITTLE ROCK, ARKANSAS 72209



6200 Dividend Drive



## GREAT DEVELOPMENT OR INVESTMENT OPPORTUNITY

	6200 Dividend Drive	6210 Dividend Drive
Sale Price:	\$795,000	\$725,000
Office Area:	1,500 SF	1,500 SF
Warehouse Area:	23,500 SF	20,000 SF
Total Size:	25,000 SF	21,500 SF
Land Area:	1.80 Acres	1.20 Acres
Ceiling Height:	20' Clear	18' Clear
Doors:	4 Dock High	2 Dock High/1 Drive-in



6210 Dividend Drive

## Contact Us

LISTING AGENT:

DICKSON FLAKE, CRE, CCIM, SIOR

501 372 6161 | EXT. 706

LITTLE ROCK, AR

[dickson.flake@colliers.com](mailto:dickson.flake@colliers.com)

LISTING AGENT:

ISAAC SMITH, CCIM, SIOR

501 372 6161 | EXT. 736

LITTLE ROCK, AR

[isaac.smith@colliers.com](mailto:isaac.smith@colliers.com)

This document has been prepared by Colliers International for advertising and general information only. Colliers International makes no guarantees, representations or warranties of any kind, expressed or implied, regarding the information including, but not limited to, warranties of content, accuracy and reliability. Any interested party should undertake their own inquiries as to the accuracy of the information. Colliers International excludes unequivocally all inferred or implied terms, conditions and warranties arising out of this document and excludes all liability for loss and damages arising there from.

COLLIERS INTERNATIONAL

1 Allied Drive, Suite 1500

Little Rock, AR 72202

[www.colliers.com/littlerock](http://www.colliers.com/littlerock)