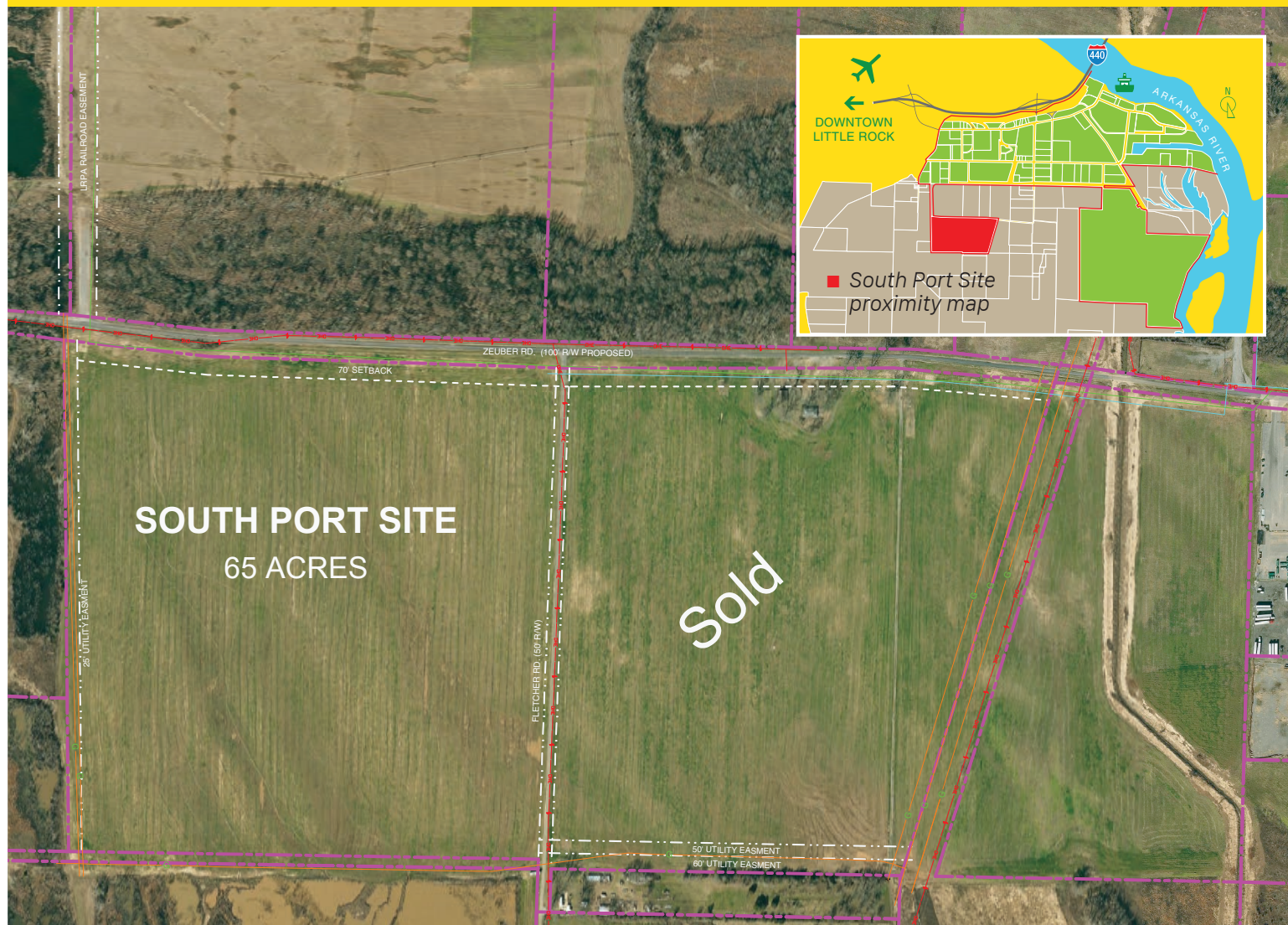
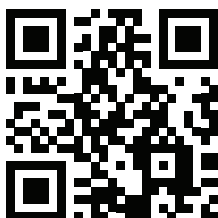


# South Port Site Close to Interstates 65 Acres



- 65 Acres
- Zoned: I-3 Industrial
- Utilities on site: water, gas, electric, sewer
- Close proximity to Interstates 40, 30 and 440
- Green Field Site

Google Port Map



The Little Rock Port Authority Industrial Park is a diverse business community representing more than 40 businesses. It has everything that a manufacturer needs to succeed. At the core of its activity is the Little Rock Port Terminal, the prime location for existing business and future expansion of businesses.



Little Rock Port Authority  
**Centered on  
global trade.**



Contact:  
**Bryan Day**  
(501) 490-1468  
[bday@lrportauthority.com](mailto:bday@lrportauthority.com)  
10600 Industrial Harbor Drive  
Little Rock, AR 72206  
[LRportauthority.com](http://LRportauthority.com)

Site in Pulaski County, AR

# South Port Site - Port of Little Rock



65 Acres certified Entergy Select Site

- ☐ Zoned: I-3 Industrial
- ☐ Utilities on site: water, gas, electric, sewer
- ☐ Close proximity to Interstates 40, 30 and 440
- ☐ Green Field Site

## 65.0

Acres

Contiguous Available:

### Listing Price

**Sale Price**

40,000/acre

**Lease Price**

4,000/acre

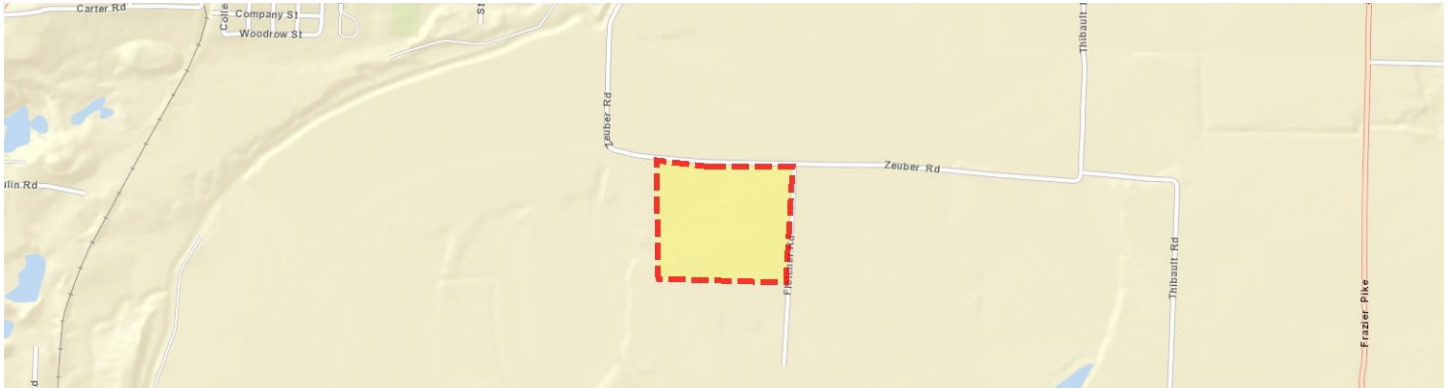
### Property Type

- Industrial

This is only a summary of this property. For complete details visit:  
<https://arkansasiteselection.com/Property/Detail/2227/South-Port-Site-Port-of-Little-Rock->

South Port Site - Port of Little Rock

## Transportation Infrastructure



Fletcher and Zeuber Road | Little Rock, Arkansas 72206

### Airports

<b>Primary:</b> Little Rock National	<b>Additional:</b> Stuttgart Municipal
<b>2.4 Miles</b>	<b>36.5 Miles</b>

### Interstates

<b>Primary:</b> I-440	<b>Additional:</b> I-530
<b>1.5 Miles</b>	<b>3.8 Miles</b>

### U.S. Highways

<b>Primary:</b> AR-365	<b>Additional:</b> AR-338
<b>1.9 Miles</b>	<b>2.2 Miles</b>

### Rail

<b>Primary:</b> Union Pacific	<b>Additional:</b> BNSF
<b>1.6 Miles</b>	<b>1.6 Miles</b>

### Navigable Water

<b>Primary:</b> ARKANSAS RIVER	<b>Additional:</b> WHITE RIVER
<b>ARKANSAS RIVER Miles</b>	<b>43 Miles</b>

### Ports

<b>Primary:</b> Little Rock Port Authority	<b>Additional:</b> Pine Bluff Port Terminal Inc
<b>2.3 Miles</b>	<b>34.1 Miles</b>



South Port Site - Port of Little Rock

## Property Details

### Fire Protection

#### Fire Station

Little Rock Fire Station #4

Distance: 1 Miles

ISO Rating: 1

### Cranes

Has Cranes: No

Crane Type: N/A

### Utilities

#### Electricity

Provider: Entergy Arkansas

#### Water

Provider: Central Arkansas Water

#### Telecommunications

Provider: AT&T

#### Natural Gas

Provider: CenterPoint Energy

#### Sewer

Provider: Little Rock Water Reclamation Authority

#### Fiber-Optic

Provider: AT&T



South Port Site - Port of Little Rock

## Space & More Information

### More Information

Property Id: 2227

Industrial Park: Yes

Within City Limits: No



South Port Site - Port of Little Rock

## Demographics

	Drive-Time: 30 minutes	Drive-Time: 60 minutes	Drive-Time: 90 minutes
<b>2018 Key Demographic Indicators (Esri)</b>			
2018 Total Population (Esri)	427,911	899,331	1,286,851
2010-2018 Population: Annual Growth Rate (Esri)	0.53	0.57	0.44
<b>2018 Daytime Population</b>			
2018 Total Daytime Population	509,145	917,117	1,281,419
2018 Daytime Population: Workers	293,772	450,510	591,901
2018 Daytime Population: Residents	215,373	466,607	689,518
<b>2018 Income (Esri)</b>			
2018 Average Household Income (Esri)	74,374	72,858	68,861
2018 Per Capita Income (Esri)	30,892	29,026	27,422
<b>2018 Educational Attainment (Esri)</b>			
2018 Education: High School Diploma (Esri)	66,477	152,642	234,224
2018 Education: Some College/No Degree (Esri)	67,329	136,162	199,518
2018 Education: GED/Alternative Credential (Esri)	11,839	31,621	51,661
2018 Education: Associate's Degree (Esri)	22,502	49,258	68,707
2018 Education: Bachelor's Degree (Esri)	61,279	114,689	148,663
2018 Education: Graduate/Professional Degree (Esri)	36,959	68,329	86,732
<b>2018 Labor Force by Occupation (Esri)</b>			
2018 Employed Civilian Population Age 16+ by Occupation Base (Esri)	211,330	429,701	586,529
2018 Occupation: Production (Esri)	10,380	25,678	39,055
2018 Occupation: Transportation/Material Moving (Esri)	11,959	26,070	37,228
2018 Occupation: Architecture/Engineering (Esri)	2,583	5,209	6,733
2018 Occupation: Farming/Fishing/Forestry (Esri)	607	2,125	5,004
2018 Occupation: Construction/Extraction (Esri)	8,039	19,373	29,143
2018 Occupation: Office/Administrative Support (Esri)	30,008	58,465	78,568



## South Port Site - Port of Little Rock

### Documents Available Online

[11447447.pdf](#)

[LRPASouthPortSite\\_FullPDF\\_Optimized.pdf](#)

### Videos Available Online

[South Port Site – Port of Little Rock](#)

To download all documents & view videos, visit <https://arkansassiteselection.com/Property/Detail/2227/South-Port-Site-Port-of-Little-Rock->

## Ready to learn more about this site?

### Ben France

*Director, Business Attraction & Expansion*

[bfrance@littlerockchamber.com](mailto:bfrance@littlerockchamber.com)

**Office:** 501-377-6004

**Mobile:** 501-413-2874

**Fax:** 501-374-6018

### Little Rock Regional Chamber of Commerce

One Chamber Plaza  
Little Rock, AR 72201

### Eddie Mraz

[emraz@littlerockchamber.com](mailto:emraz@littlerockchamber.com)

**Office:** 8507360046

**Mobile:** 8507360046

### Little Rock Regional Chamber

1 Chamber Plaza Little Rock, AR 72201

Entergy Corporation and its subsidiaries, including Entergy Services, LLC, Entergy Arkansas, LLC, Entergy Louisiana, LLC., Entergy Mississippi, LLC, Entergy New Orleans, LLC, Entergy Texas, Inc., (collectively, the "Entergy Companies") are not licensed to market any real property.

Information about these properties is provided merely to assist in economic development efforts. The Entergy Companies make no representations or warranties whatsoever regarding accuracy or completeness of the information nor the condition or suitability of these properties. Inquiries about any property should be directed to the listing broker for that property. Used only with the permission of the Entergy Companies. Usage restricted.

© 1997 – 2019, Entergy Corporation, All Rights Reserved.

This is only a summary of this property. For complete details visit:

<https://arkansassiteselection.com/Property/Detail/2227/South-Port-Site-Port-of-Little-Rock->



**Buildings & Sites®**

By Entergy