



# Available For Lease

220,000 SF for Lease

**JACKSONVILLE, ARKANSAS**

**For Additional Information:**

Eric Weiss  
Vice Chairman  
M: +1 615-250-1575  
[eweiss@savills.us](mailto:eweiss@savills.us)

# Jacksonville, Arkansas

## Property Overview



Address:	1100 North Redmond Road Jacksonville, Arkansas 72076-3625
Building Size:	Number of Sections: three (3) total: #1 220,000 SF <b>(Available Space)</b> #2 170,000 SF #3 50,000 SF
Year Built:	1975. Renovated 2025
Construction:	Floors: 7" slab Wall: Metal Roof: Insulated metal. Replaced in 2005. Replaced major part of roof in 2024. Replaced all LED light in 2024
Acreage:	39.81 Acres Primary Site 19.25 Acres Surplus Land
Clear Height:	220,000 SF section. 22 ft- 28 ft clear <b>(Available Space)</b>  170,000 SF Section—Building 2-22 ft clear to 28 ft clear  50,000 SF Section—Building 3 -22 ft clear to 28 ft clear
Column Spacing:	55' x 25'
Truck Loading:	Twenty-five (25) 8' x 10' dock doors with levelers One (1) 9' x 12' drive-in door
Zoning:	M-2; Heavy Industrial
Lighting:	T5 LED tube light, motion sensor controlled
Power:	Entergy LLC. Pls see attached power per building. Available power and switch total 8000 amps
Sprinkler System:	ESFR
Natural Gas:	Summit Utilities. 6-inch gas pipe
Water:	Jacksonville Water Works. 2 Million gallons per day
Sewer:	Jacksonville Waste Water Utility. 1.6 million gallons per day, discharge pipe is 10-inch
Heat:	Gas heater is located on the columns

# Jacksonville, Arkansas

## Property Overview



Parking:	100,000 SF parking lot, can accommodate over 70 parking trailers	
	35 employee parking spaces next to Building 1	
Transportation:	Located adjacent to Highway 67, providing access to I-40, I-30, I-530, and the Little Rock Airport 15 mins to Little Rock Airport, 1.3 miles to 6 lane Interstate highway 57. 6 miles to 6 lane Interstate Highway 40	
	130 Miles from Memphis /Memphis International Airport & FedEx main hub	
Operating Expenses:	Estimated Tax/SF/Year	\$0.66
	Estimated Insurance/SF/Year	\$0.22
Miscellaneous:	4 offices, plus employee breakroom, shipping and receiving room, 2 male and 2 female bathrooms, total 3000 sf	







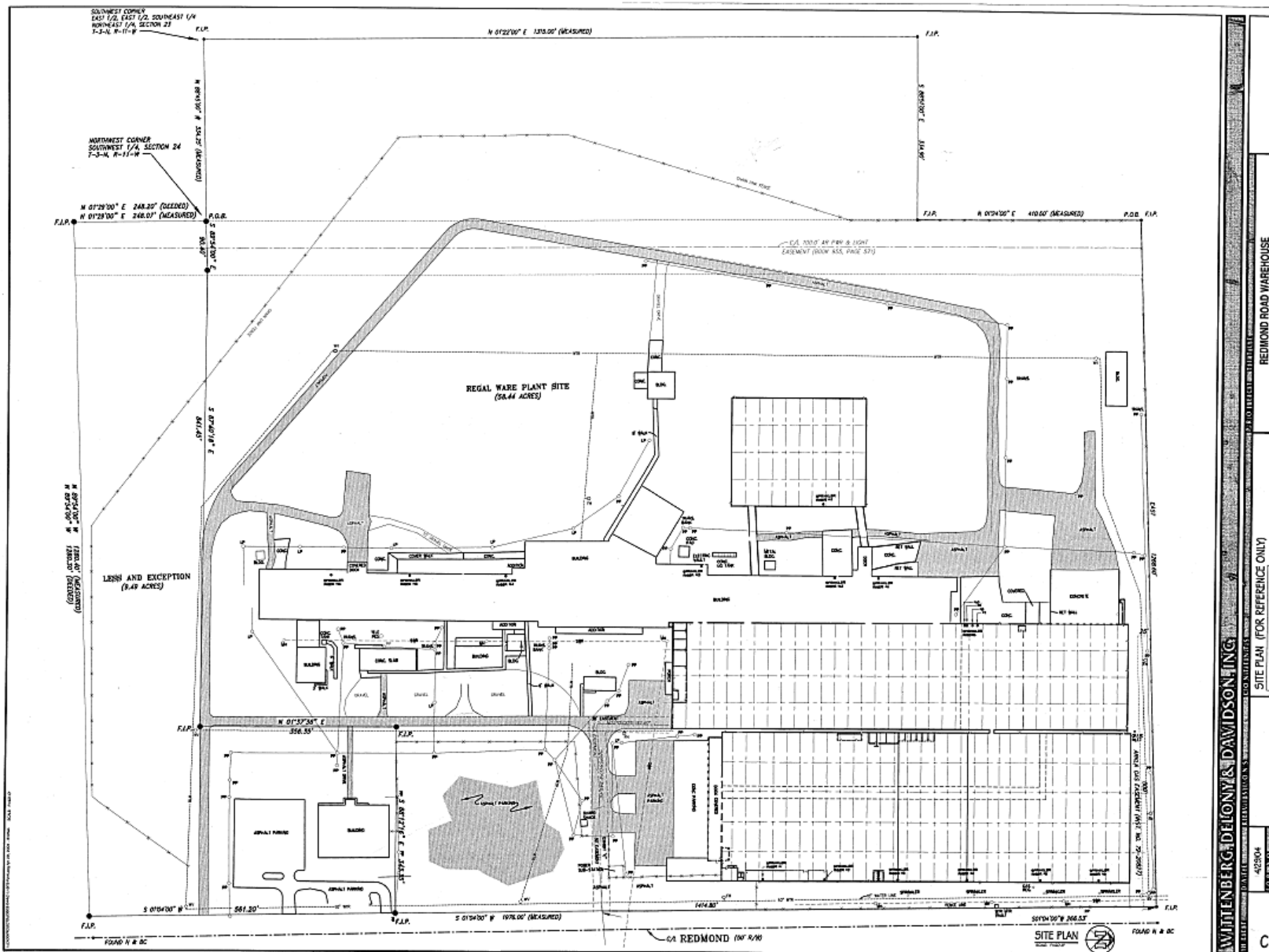




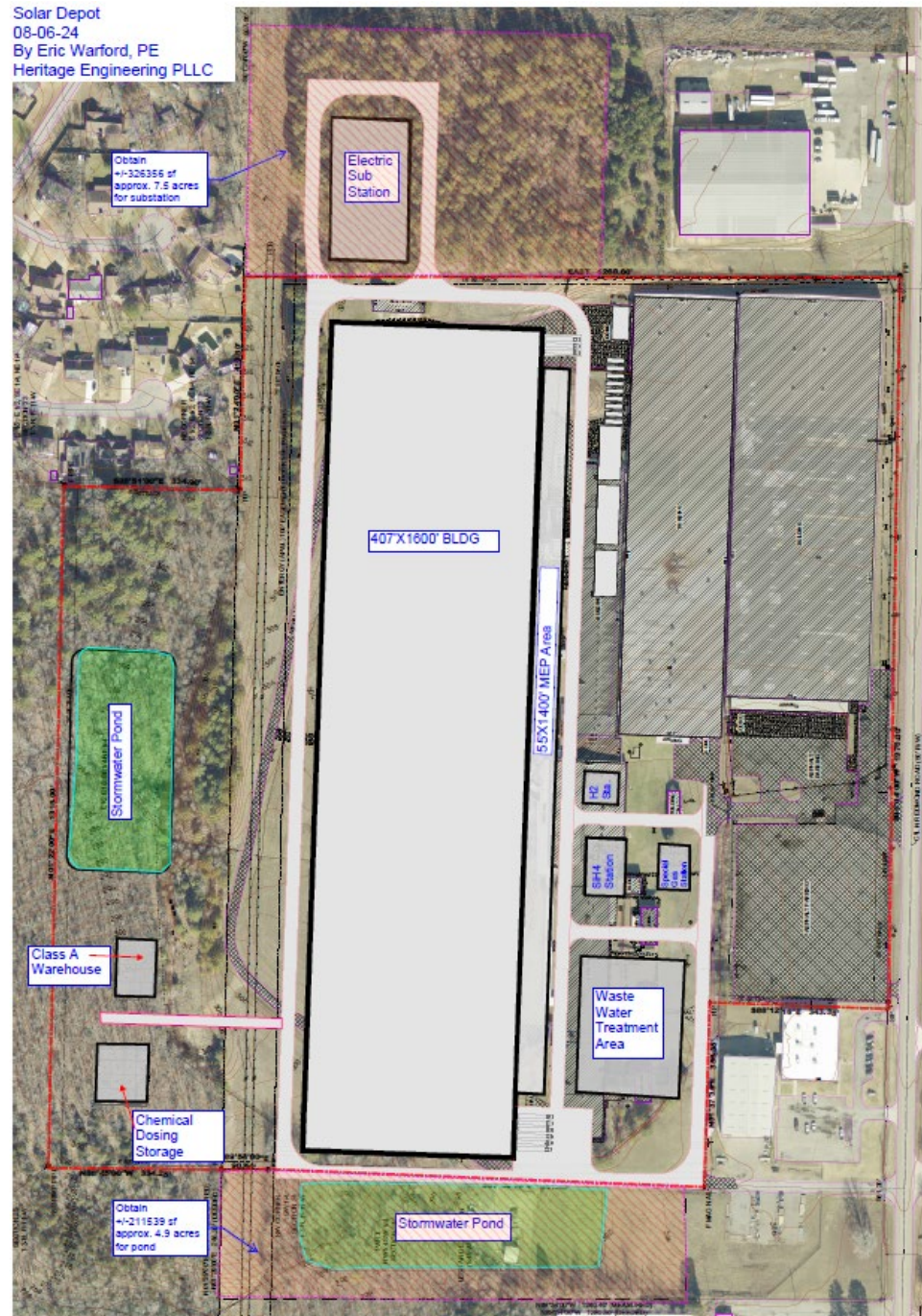
# Aerial Photo



# Site Plan



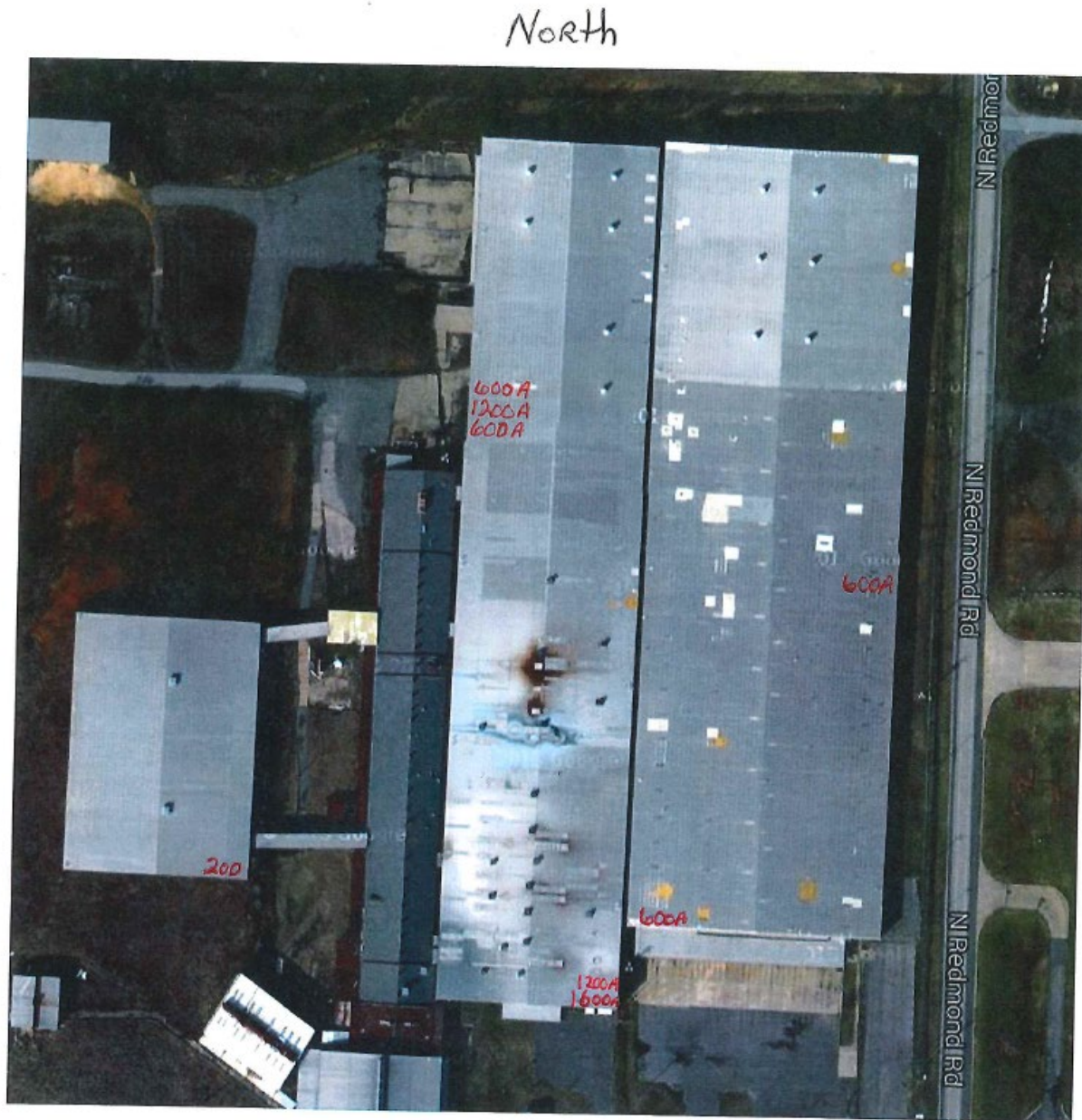




# Solar Depot - Jacksonville, AR Color Conceptual Overlay

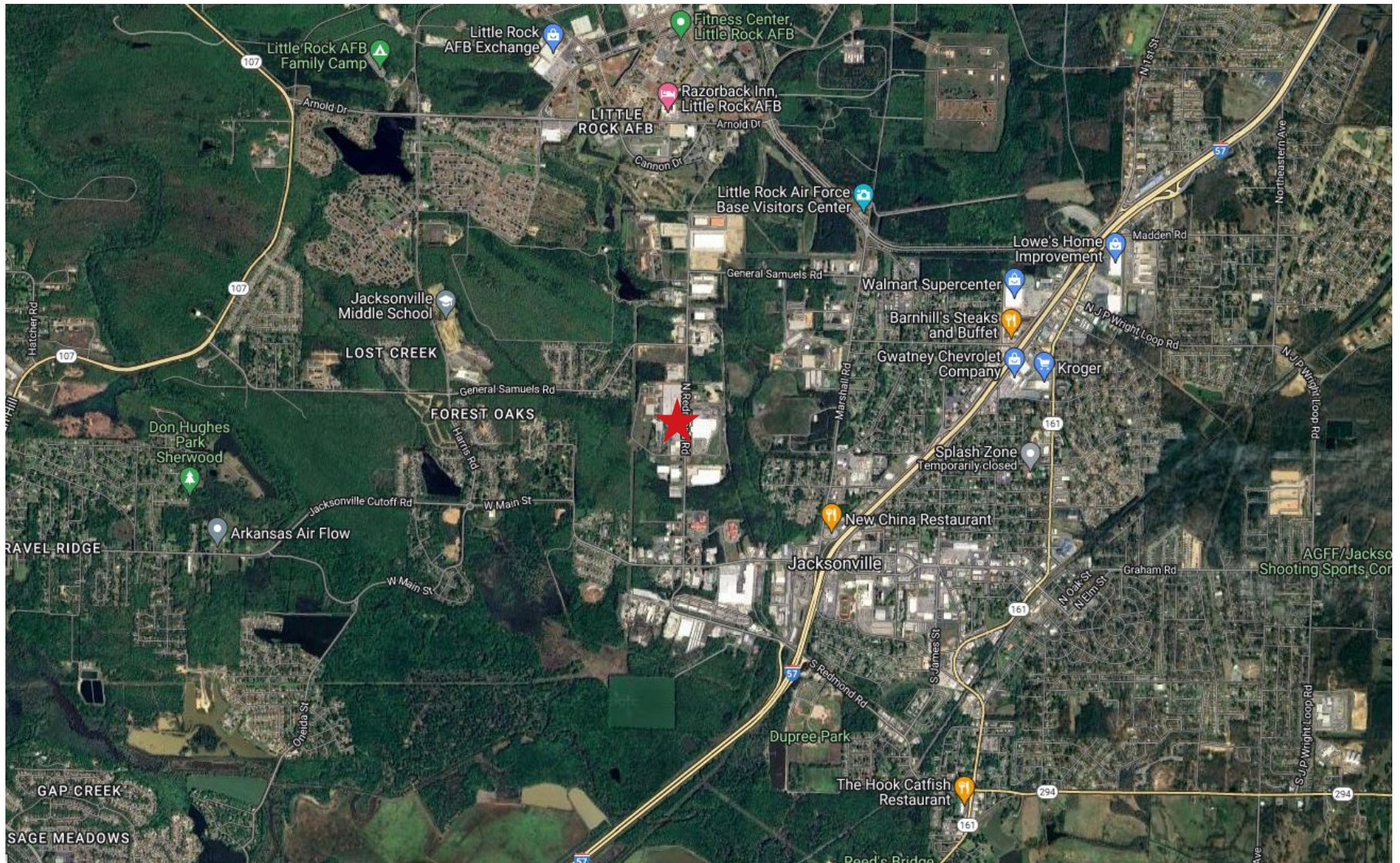


# Power In Each Building





# Regional Map





# Contact

Monarch Tower  
3424 Peachtree Road  
Suite 2100  
Atlanta, Georgia 30326  
+1 404 467 0707

[savills.us](http://savills.us)

**Erik Weiss**

M: +1 615-250-1575  
[eweiss@savills.us](mailto:eweiss@savills.us)

**[savills.us](http://savills.us)**

Disclaimer: The material in this presentation has been prepared solely for informational purposes and is strictly confidential. Any disclosure, use, copying or circulation of this presentation (or the information contained within it) is strictly prohibited, unless you have obtained Savills' prior written consent. Neither this presentation nor any part of it shall form the basis of, or be relied upon in connection with, any offer or transaction, or act as an inducement to enter into any contract or commitment whatsoever. NO WARRANTY OR REPRESENTATION, EXPRESS OR IMPLIED, IS GIVEN AS TO THE ACCURACY OR COMPLETENESS OF THE INFORMATION CONTAINED HEREIN AND SAVILLS IS UNDER NO OBLIGATION TO SUBSEQUENTLY CORRECT IT IN THE EVENT OF ERRORS. Savills shall not be held responsible for any liability whatsoever or for any loss howsoever arising from or in reliance upon the whole or any part of the contents of this document or any errors therein or omissions therefrom.