

Dallas, TX	167 miles West
Little Rock, AR	140 miles East
Shreveport, LA	70 miles South

Location & Transportation

Located on the Texas/Arkansas border at Interstate 30 (178 miles east of Dallas, Texas), the twin cities of Texarkana, Arkansas and Texarkana, Texas cover nearly 70 square miles and have historically been a hub of metropolitan conveniences, commerce and transport to the surrounding region. That legacy remains truer than ever today, as millions of dollars in goods and products make their way through the region daily.

Centrally located in the NAFTA trade corridor, the region is easily accessed through a network of highways, railways, trucking lines, freight carriers, bus lines and airports. There is even a one-day service via railway to the Port of Shreveport.

More than 90 trains travel through Texarkana each day. About 40 freight terminals ship one million tons of finished products out of the cities each year. With 38 Greyhound connections, city bus services, 325 available rental vehicles, and an airport making multiple round-trip flights daily to the Dallas travel hub, people move as easily as products do through the region. Texarkana is a city connected to its roots and connected to the world. That tradition as a crossroads of culture and commerce continues with the completion of Interstate 49 scheduled for completion within the next 10 years.

Railroads

- Union Pacific, Kansas City Southern and Amtrak
- More than 79 freight trains travel through Texarkana daily
- Amtrak service daily

Highways

- Interstates: I-30 I-49 and proposed I-69
- Highways: 59 67 71 and 82
- Texas State Highway 93
- Arkansas State Highways : 296 237 245 and 196

Motor Freight

- Over 39 freight terminals
- Over one million tons of finished products shipped annually
- Thousands of pounds of raw and consumer goods shipped in daily

Bus Service

- Greyhound Lines: Provides 41 connections daily
- Several local charter services available
- Texarkana Urban Transit District provides service throughout the community

Automobile Rental

- 4 local rental companies
- Over 430 rental vehicles located in Texarkana

Air

- Texarkana Regional Airport Primary Runway: 6,600 feet Secondary runway 5,200 feet
- American Eagle connection
- 4 daily round trip flights to Dallas/ Fort Worth International Airport

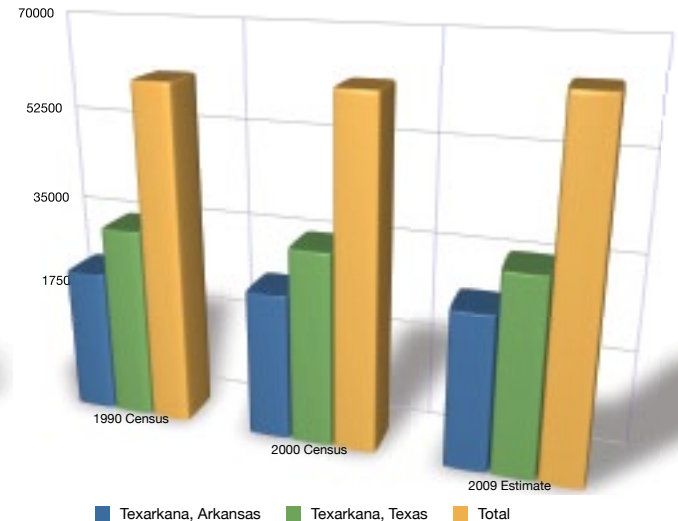
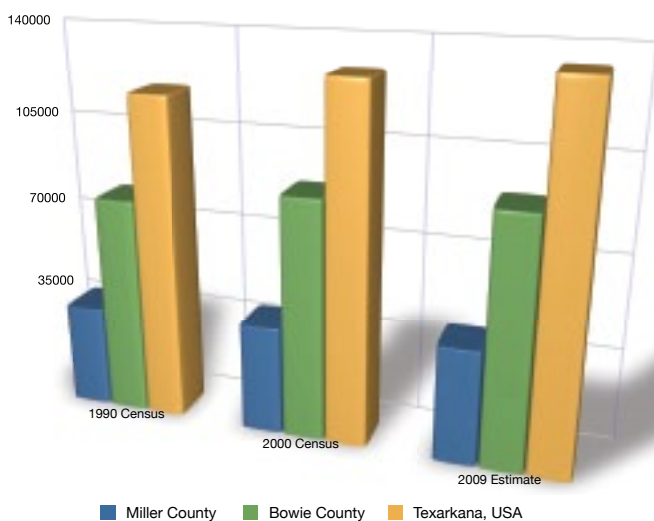
Airport

- Fixed Base Operator: TAC Air
- Cargo Air: Fed Ex, UPS, Airborne Express

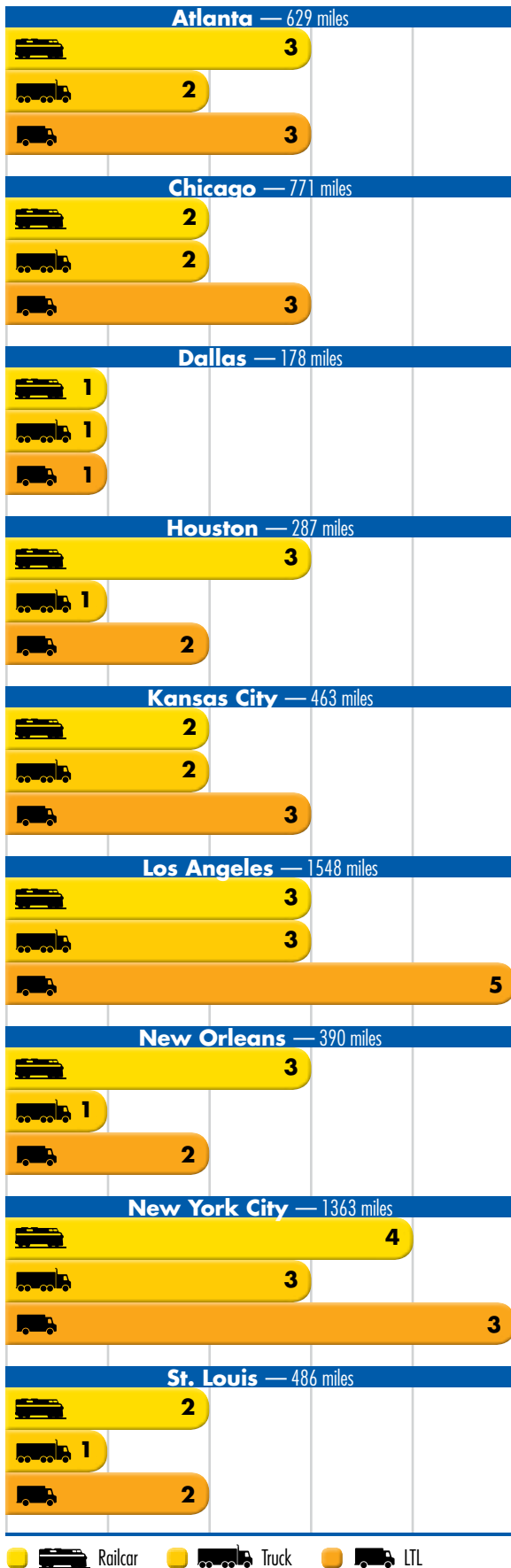
Water

- One day service via railway to the Port of Shreveport

Population



Length of Time Goods In Transit from Texarkana MSA — in days



Communications

Newspapers

Texarkana Gazette

Frequency: Daily

Circulation: 32,000 Weekday - 35,000 Sunday

American Classifieds

Frequency: Weekly

Circulation: 30,000

Television Stations

Local: ABC, NBC, CBS, and FOX affiliates

Digital Cable Service is available

Radio Stations

Local AM Stations 5

Local FM Stations 8

Telephone Service MSA

Local Providers: Windstream, Southwest Arkansas Telephone Cooperative

Fiber Optics: 194 miles

Full ISDN capabilities in place



Texarkana was also listed at #22 by a report "Americas' 25 Next Reviving Job Markets" (<http://realestate.yahoo.com/promo/10-housing-markets-where-prices-have-gone-up.html>) by a report from business.com and Moody's Economy.com. The report identified the metro areas that were anticipated to outgrow the nation... The rankings were based on job growth during the first projected quarter of 2010.

Quality Of Life

Land Area

City Limits	Square Miles
Texarkana, Arkansas	42
Texarkana, Texas	29.5
Total	71.5

Counties

Miller County, Arkansas	624
Bowie County, Texas	923
Total	1547

Recreational Facilities

Parks	26
Golf Courses	6 (4 Public and 2 private)
Public Tennis Courts	8
Public Swimming Pools	1
Country Clubs	2
Community Centers	7
Number of Hotels	37

Lakes:

Lake Wright Patman - Within 9 miles of City Limits
Millwood Lake - Within 28 miles of City Limits

Churches & Synagogues

Catholic	2 Churches
Jewish	1 Synagogue
Protestant	245 Churches
Over 40 Protestant Denominations	



Climate

Annual Average Temperature	— 64.7 degrees
Annual Average Rainfall	— 47.38 inches
Annual Average Snowfall	— 1.1 inches
Prevailing Wind Direction	— SSW (220 deg) at 5.8 MPH
Humidity (noon average)	— 73%
Elevation	— 390 feet

With its long summers (temperatures averaging in the 80's) and mild winters (rarely dropping below the mid 40's), the annual average temperature hovers around a temperate 65 degrees Fahrenheit. The region enjoys an average rainfall of just over 45 inches per year with the rare snowfall adding up to just over one and a half inches per year. The mild weather makes the region an ideal setting for outdoor activity, and with 27 parks, 6 golf courses, 30 tennis courts, two major lakes less than 30 minutes away, in addition to public swimming, country clubs, hunting grounds and hiking trails, Texarkana offers up an outdoor adventure for any taste.

Nearly 250 churches, chapels and synagogues, offer people of faith opportunities of worship in the manner and language they choose with churches tailored for non-English speaking populations as well.

The citizens of Texarkana stay connected to each other and the world through locally produced monthly magazines of all kinds, a weekly, classified newspaper topping 30,000 in circulation and a local newspaper with circulation of about 35,000. High-speed internet



Quality Of Life

is readily available through DSL and Cable. Broadcast media include 14 local AM and FM radio stations and local ABC, NBC, CBS and Fox affiliates in addition to digital cable and satellite options. The latest telecommunications technology is also in place with mobile and traditional phone service options. Over 120 miles of fiber optics and full ISDN capabilities in place, help provide reliable and affordable communication services to the region.

Regional events and festivals centering around art and music provide a taste of regional history, food and fun. Historic museums and theatres host national exhibits, Broadway shows, international ballet performances and more. Texarkana provides a unique mix of extraordinary natural beauty and metropolitan convenience and offers a serene quality of life unlike anywhere else.

COMMUNITY PROFILE



Public transportation in the Texarkana area provided by Texarkana Urban Transit District (TUTD).



Golf Courses

New Haven Golf Club

2321 Line Ferry Road
870-774-5771

Northridge Country Club

120 Bill Rogers Drive, 903-794-6196

Oak Grove Golf Club

One Oak Grove Drive
Red River Commerce Park/
TexAmericas Center
on U.S. Highway 82
West of Texarkana
903-223-8402

Texarkana Country Club

#1 Country Club Lane
870-772-8221

Texarkana Golf Ranch

7401 Scott Wright Rd
903-334-7401

The Links

333 Links Dr
870-773-2295

Governmental Services

Texarkana, USA, is really two independently functioning cities that share a state line and a long history of mutual cooperation. Between local city and county governments, Texarkana is served by a police force of nearly 250 officers with nearly 140 vehicles patrolling the area. The collective crews of city and county firefighters, including paid staff and volunteers, totals over 500 individuals.



Bi-State Justice Building

The only such facility in the world, the Bi-State Justice Center is home for over 20 city, county and state judicial and law enforcement agencies for the states of Arkansas and Texas. Because this building is located in two states, special legislation by both Arkansas and Texas created unique legal jurisdictions, applicable only inside the building. Bi-State is located at 100 State Line Avenue.



Arkansas City Hall



Texas City Hall

GOVERNMENTAL SERVICES

	Police Officers	Police Vehicles	Firefighters	Equipment	Insurance Rating
Texarkana, Arkansas City Government	82	35	59	12	4
Government Type: Mayor/Board					
Texarkana, Texas City Government	100	25	79	9	2
Government Type: Mayor/Council					
Miller County	35	23	133	14	Class 9
Government Type: County Judge/Quorum Court			Volunteers		
Bowie County	40	40	265	51	Class 6-10
Government Type: County Judge/Commissioners Court					

Source: Verified by Phone

Health Care Services

Texarkana is the regional medical center for a population of more than 400,000 within a 60-mile radius of the community. Over 675 beds are staffed by more than 3,150 health care professionals, in order to serve the medical needs of the region. Medical, surgical and diagnostic services include open-heart surgery, hemodialysis, laser surgery, rehabilitation, radiation therapy, liposurgery and a mobile intensive-care hospital. Other medical facilities serving the area include two rehabilitation hospitals with 140 beds, a treatment center for disabled adults and children, two dialysis centers, and a diabetes clinic. Special needs of the elderly are filled by 10 full-care nursing homes, and 9 retirement and assisted living facilities providing a variety of services and lifestyles for the elderly. Home health services, meals-on-wheels program and hospice services are readily available. The average hospital room is \$550 per day while an average doctor's office visit is about \$75, and the average dentist charges just over \$50 for a semi-annual checkup.

Wadley Regional Medical Center

Wadley Regional Medical Center is an acute care hospital that has served the Texarkana community since 1900. With a strong commitment to customer satisfaction, Wadley's employees are the cornerstone of the quality care provided to its customers. Wadley serves approximately 350,000 people in a 16 county region in Texas, Arkansas and Oklahoma



Wadley Regional Medical Center (Photo courtesy of Wadley)

and offers a full range of medical services including cardiovascular, neuroscience, orthopedics, senior care, behavioral health, women's services, obstetrics, neonatal care, wound care, 24-hour emergency care, and intensive care.

Bringing technology and services to the community is a long time tradition of Wadley. With the first Lap-Band procedure done in Texarkana in 2004, Wadley is designated by the American Society for Metabolic and Bariatric Surgery (ASMBS) as a Bariatric Surgery Center of Excellence. As the first hospital in Texarkana to achieve certification by The Joint Commission in 2008 as a Primary Stroke Center and designated by the State of Texas as Primary (Level II) Stroke Center in 2009, stroke care is another area of expertise for Wadley. Minimally invasive surgery is a key service and Wadley introduced robotic surgery

to Texarkana with the da Vinci SI surgical system in 2009. Wadley currently has the only hospital-based Prenatal Clinic and inpatient geriatric behavioral health unit for those over 55.

Wadley's team of dedicated employees commit themselves not only to providing first-class quality patient care, but also to improving the overall quality of life in the community by giving back and getting involved. Wadley is a community-built organization deeply entrenched and involved with the communities it serves. As the organization to bring the Susan G. Komen Race for the Cure to Texarkana, Wadley

continues to actively support the Race as well as the American Heart Association, the American Cancer Society's Relay for Life, the United Way and many other non-profit organizations. Wadley's commitment goes far beyond that of traditional healthcare with the donation of time, financial support and community awareness.

Source: Wadley Regional Medical Center

CHRISTUS St. Michael Health System

Established in 1916 in Texarkana by the Sisters of Charity of the Incarnate Word as the Michael Meagher Memorial Hospital, CHRISTUS St. Michael



Christus St. Michael Health Center
(Photo courtesy of Christus St. Michael Health Center)



Christus St. Michael Rehabilitation Hospital
(Photo courtesy of Christus St. Michael Health Center)

Health System serves residents of Texas, Arkansas, Oklahoma, and Louisiana. With a mission to “extend the healing ministry of Jesus Christ,” the faith-based 312-bed hospital offers comprehensive, specialized healthcare including a Level III NICU (Neonatal Intensive Care Unit), to advanced cancer care, surgical, and heart services. As a recognized regional leader in surgery, heart care, heart surgery, neurosurgery, stroke and cancer care, CHRISTUS St. Michael treated over 72,500 Emergency Department patients last year... more than any area ED.

CHRISTUS St. Michael provides patient-centered specialty care through a dedicated Primary Stroke Center certified by both The Joint Commission and the State of Texas. The CHRISTUS St. Michael Center for Joint

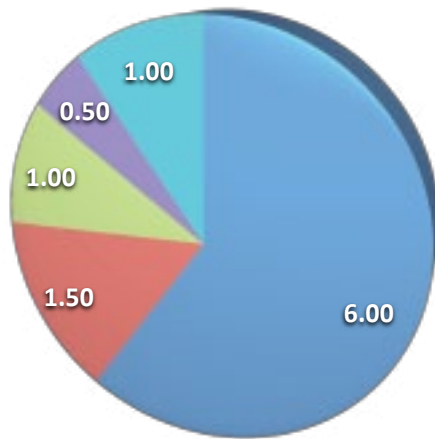
Replacement as well as day surgery, open heart surgery, orthopedic surgery, vascular surgery, neurosurgery, cardiac/pulmonary rehabilitation, diagnostic radiology, therapeutic and wellness programs.

Collum & Carney Clinic

Collom & Carney Clinic is a Multi-Specialty Physician Group Practice whose Physicians and Staff are committed to providing quality health care services to the Four States Area. Comprised of almost every Medical Specialty offered in the Ark-La-Tex, our goal is to provide a complete health care solution for the patients and their families. The staff of Collom & Carney Clinic takes pride in offering care and compassion to the ever changing health care needs of our community.

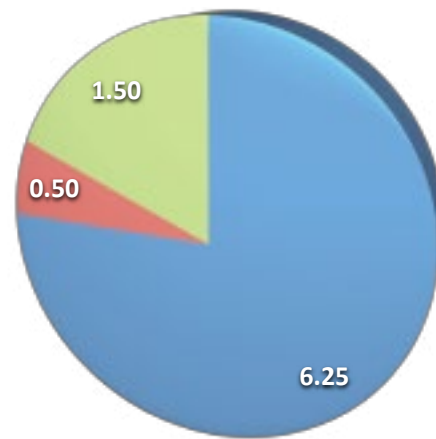
Retail Sales Tax

Texarkana, AR



- State of Arkansas
- City of Texarkana, Arkansas
- In Lieu of State Income Tax
- Miller County
- Special

Texarkana, TX



- State of Texas
- City of Texarkana, Texas
- Bowie County

Local Economy

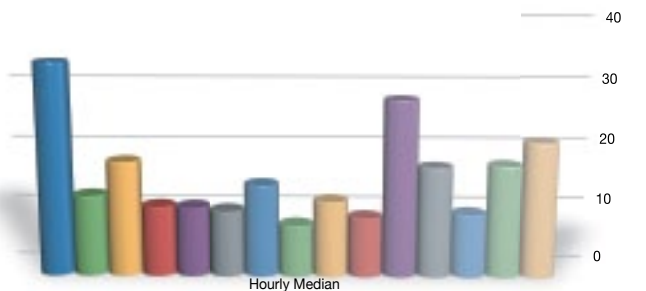
While the cities of Texarkana have a combined population over 60,000, they serve a retail trade area of 18 counties and over 430,000 people strong. In 2007, Texarkana's retail sales MSA topped 1.3 billion dollars. Texarkana's average income per capita income as of 2003 studies was approaching \$25,000, with local residential utilities among the most affordable in the nation according to 2005 data that put the combined cost of electricity, natural gas, water, wastewater disposal, and garbage collection at just under \$200 per month. The Texarkana residential

housing market is valued over \$20 million and non-residential properties topped \$56 million in 2005. The majority of Texarkana citizens own their own home with nearly 63% owner occupied. About 30% of the over 56,000 available dwellings are rental space and only 10% of available housing is vacant at any given time.

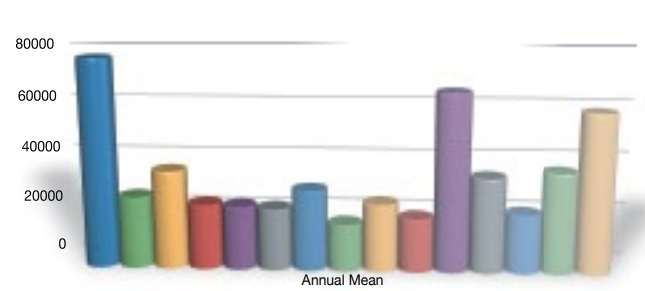
Local sales tax differs across the state line with 10% rate on Arkansas side and 8.25% rate in Texas. However, property taxes are lower on Arkansas side in general, though the tax burden in Texarkana is extremely competitive on a national level.

Hourly Wage

Source: Texas Workforce Commission



- Architecture and engineering
- Computer Operators
- Construction Laborers
- Dental Assistants
- Production Workers- Helper
- Registered Nurse
- Tellers
- Welders, Cutters, Solderers and Brazers
- Cement Mason/Concrete Finisher
- Construction and related workers, all others
- Data Entry Keyers
- Food Preparation Workers
- Receptionist and Information Clerk
- Shipping, Receiving, and Traffic Clerks
- Truck Drivers Heavy and Tractor Trailers

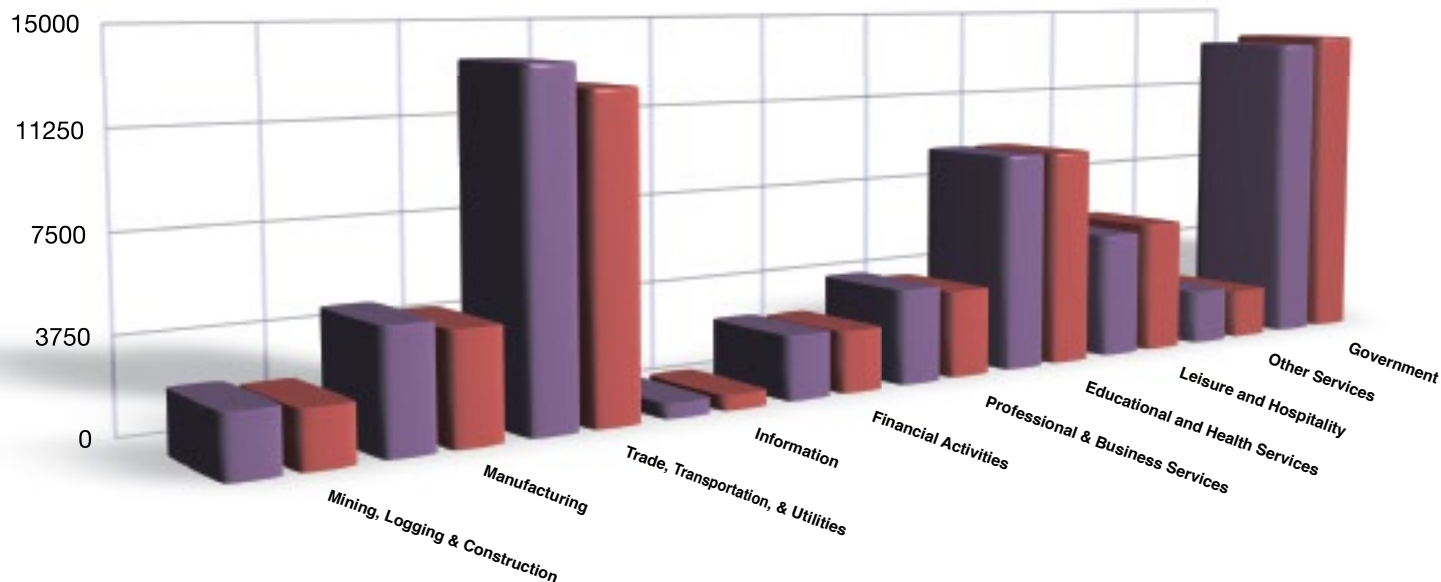


- Architecture and engineering
- Computer Operators
- Construction Laborers
- Dental Assistants
- Production Workers- Helper
- Registered Nurse
- Tellers
- Welders, Cutters, Solderers and Brazers
- Cement Mason/Concrete Finisher
- Construction and related workers, all others
- Data Entry Keyers
- Food Preparation Workers
- Receptionist and Information Clerk
- Shipping, Receiving, and Traffic Clerks
- Truck Drivers Heavy and Tractor Trailers



Labor Market By Sector

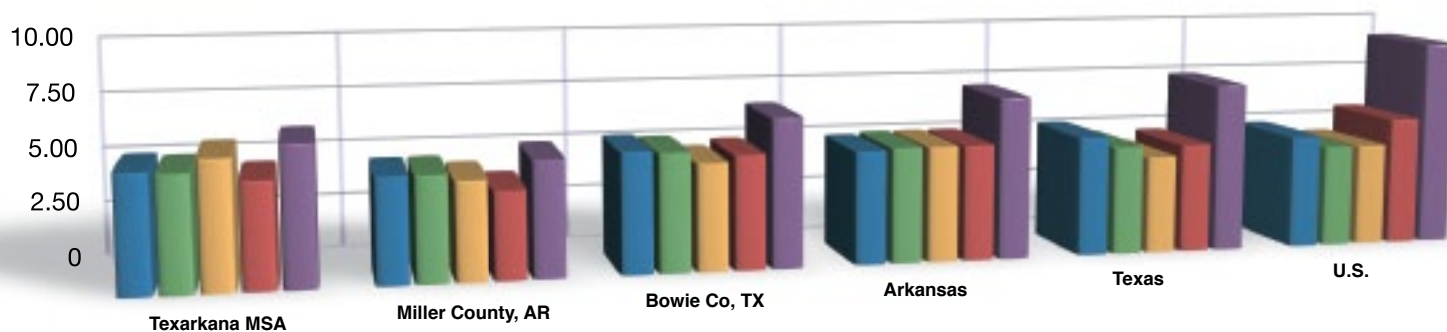
■ 2008 ■ 2009



Unemployment Rates

Source: Bureau of Labor Statistics

■ 2005 ■ 2006 ■ 2007 ■ 2008 ■ 2009



Financial Institutions

Banks

American State Bank
Bank of the Ozarks
BankcorpSouth
Capital One, NA
Commercial National Bank
First National Bank
Guaranty Bond Bank
Peoples State Bank
Regions Bank
Texana Bank
Texarkana First Bank
Wells Fargo, NA
Woodforest National Bank

Credit Unions

Domino Federal Credit Union
Federal Employees Credit Union
Miller County Teachers
Federal Credit Union
Mil-Way Federal Credit Union
Morris Sheppard Credit Union
Red River Federal Credit Union
Swemp Federal Credit Union
Texar Federal Credit Union
Texarkana Terminal
Employee's FCU



In a 2009 article by Kiplinger.com (http://www.kiplinger.com/tools/slideshows/slideshow_pop.html?nm=10citieswherehomepricesrising&page=3), Texarkana ranked 2nd among the ten metro areas that enjoyed the greatest home-price increases over the past year. In perspective the declining housing market was what pushed so many metro areas throughout the country into the depths of the recession. This article recognizes that Texarkana was able to avoid those problems and actually saw an appreciation in housing values during the last year.

Labor & Industry

Regional employers draw from a workforce of over 65,000 individuals. Area employers will attest to the trainability and dedication of the workforce. Low absentee and turnover rates are the norm. A record successful operation and continued growth by several area industries give clear testimony to the work ethic of the people of this region. Shift work is commonplace in this economy with many area plants operating three shifts, while others operate 24 hours a day, seven days a week. Unemployment rates are in keeping with the national average, but with lower cost of living vs. annual averages, pay rates are competitively lower—offering industry greater value for their cost investment. The average receptionist or clerk could expect to earn about \$8.75 per hour, while a welder earns just over \$14 per hour and an experienced, registered nurse could expect to earn up to \$24 per hour.

Texarkana boasts nearly 550 acres of available designated industrial park development space—the majority of which is enterprise zone rated and all of which is convenient to local transportation routes and all utility services.

MONTHLY RESIDENTIAL UTILITY BILLS

Electricity \$90

Natural Gas \$65.56

Water*

Texarkana, Arkansas \$8.86

Texarkana, Texas \$8.15

Wastewater*

Texarkana, Arkansas \$11.47

Texarkana, Texas \$10.52

Solid Waste*

Texarkana, Arkansas \$18.04

Texarkana, Texas \$15.94

Based on 1000 kwh electricity, 43 Ccf natural gas, minimum water and sewer bill and twice per week solid waste pickup

** Billed together by Texarkana Water Utilities*

INDUSTRIAL SITES

Name of Site	Acreage	Ownership	Enterprise Zone	Water	Sewer	Electric	Gas	Rail
Maxwell Industrial Park	75	Texarkana Chamber of Commerce	yes	yes	yes	yes	yes	no
I-30 Industrial Park	24	Texarkana Chamber of Commerce	no	yes	yes	yes	yes	yes
Falvey Industrial Park	29	Texarkana Chamber of Commerce	no	yes	yes	yes	yes	no
Nash Business Park	70	Nash Industrial Development Corp.	no	yes	yes	yes	yes	yes
TexAmericas Center (Formerly Red River Redevelopment Authority)	200	TexAmericas Center (Formerly Red River Redevelopment Authority)	yes	yes	yes	yes	yes	yes

NEW CONSTRUCTION

Texarkana, Arkansas-Texas City Limits

	Residential	Non-Residential	Total
2007	\$29,289,798	\$22,565,553	\$51,855,351
2008	\$9,295,931	\$38,099,122	\$47,395,053
2009	\$11,732,739	\$7,413,250	\$19,145,989

HOUSING

Number of Dwelling Units: 57,898

% Owner Occupied: 56.30%

% Rental Occupied: 26.10%

% Vacant: 17.70%

Source: Sites on Texas

COST OF LIVING

	Composite	Grocery	Housing	Utilities	Transportation	Health Care	Misc Goods
Texarkana MSA	92.0	96.9	79.0	101.1	92.5	92.7	98.5
Little Rock, AR	94.6	91.0	90.4	101.7	93.1	92.9	98.3
Shreveport, LA	95.7	93.8	95.1	88.5	92.1	92.8	100.9
Dallas, TX	92.9	96.5	71.1	107.1	98.3	104.8	103.2
Tyler, TX	95.5	92.6	91.1	99.7	99.0	90.6	98.8
Hot Springs, AR	94.1	97.0	87.3	92.5	86.9	85.3	103.6

Source: Sperling's Best — National Average 100

PER CAPITA PERSONAL INCOME

	Texarkana MSA	Miller Co.	Bowie Co.
2004	26,725	26,563	26,801
2005	27,879	27,488	28,062
2006	29,153	29,293	29,087
2007	31,311	31,328	31,302
2008	32,338	31,994	32,498

Source: Bureau of Economic Analysis (Regional economic profiles)

AVERAGE WAGE AND SALARY DISBURSEMENT

	Texarkana MSA	Miller Co.	Bowie Co.
2004	30,223	30,493	30,134
2005	31,384	30,426	31,694
2006	32,878	32,295	33,069
2007	34,360	33,548	34,625
2008	35,149	33,014	35,805

Source: Bureau of Economic Analysis (Regional economic profiles)

Utilities

Electricity

Supplier: AEP Southwestern Electric Power

Source: Nine plants in Arkansas, Louisiana and Texas

Electric Customers: 474,301 total/45,000 in Texarkana MSA

Peak Demand: 4,950 MW

Supplier: Bowie-Cass Electric Cooperative

Source: North East Texas Electric Cooperative

Electric Customers: 36,300

Peak Demand: 166 MW

Supplier: Southwest Arkansas Electric Cooperative

Source: Arkansas Electric Cooperative Corporation

Thirteen plants in Arkansas including hydro, coal and gas

Electric Customers: 490,000 statewide/Southwest

Arkansas Electric Cooperative REA – over 27,000 metered points of delivery

Peak Demand: Statewide 1923 MW/Southwest

Arkansas Electric Cooperative REA 146 MW

Natural Gas

Supplier: CenterPoint Energy

Source: Variety of gas markets

Total Gas Sales: 406 BCF total/2,058,000 MCF in Texarkana MSA

Sewer

Supplier: Texarkana Water Utilities

Design Capacity: 21 MGD

Daily Usage: 13.166 MGD

Type of Treatment Plant: South Regional-Coupled Bio-Filter/Activated Sludge, Waggoner Creek-Activated Sludge, North Texarkana-Activated Sludge

Treated Water

Supplier: Texarkana Water Utilities

Source: Lake Wright Patman, Millwood Lake, SW Arkansas Water District

Customers: 24,563 in Texarkana MSA

Population Served: 103,641 in the Texarkana MSA

Capacity of Water Plant:

Average Daily Consumption: 33 MGD

Peak Consumption: 14.419 MGD

Storage Capacity: 21.907 MGD

Ground 12,950,000 gals

Elevated: 4,800,000

Pressure In Mains: (varies 40-70 PSI)



Major Employers

Companies	Local Employees	Primary Business/ Local Function
Red River Army Depot & Tenants	6000	Manufacturer/Processors
Christus St. Michael Health System	1883	General Medical Hospital
Cooper Tire & Rubber	1600	Manufacturer of Passenger Tires
Domtar, Inc.	1300	Fine Finished Papers
Texarkana, TX Ind. School District	1100	Primary & Secondary Education
Wal-Mart/Sam's Club	1100	Discount Stores
International Paper Company	960	Cup and Folding Carton
Texarkana, AR School District	785	Primary & Secondary Education
Wadley Regional Medical	778	General Medical Hospital
Southern Refrigerated Transport	750	Refrigerated Trucking
Texarkana, Texas -- City	600	General Government
Texarkana College	569	Post-Secondary Education
Collom & Carney Clinic	567	General Medical Services
Truman Arnold Companies	460	Petroleum Marketing
Liberty Eylau Ind. School District	455	Primary & Secondary Education
McDonald's	345	Restaurants
Albertson's	280	Supermarkets
Pleasant Grove Ind. School District	275	Primary & Secondary Education
E-Z Mart Stores, Inc.	260	Convenience Stores
Ledwell & Sons Enterprises	243	Manufacture of Truck Bodies
Day And Zimmermann, Inc.	234	Small Arms Ammunition
Wholesale Electric	230	Distributor
Texarkana, Arkansas -- City	225	General Government
Smith-Blair, Inc.	212	Large Valves and Couplings
BWI	169	Wholesale Distribution
Sterno Group/Candle Corp	152	Canned Heat -- Sterno Brand
JCPenney	150	Department Stores
Lowe's Home Center, Inc.	150	Retail Store
Dillard's, Inc.	145	Department Stores
Genoa Central School District	145	Primary & Secondary Education
JCM	145	Manufacturer of Pipeline Fittings
Mayo Manufacturing	137	Upholstered Furniture
Sears Roebuck & Co.	124	Department Stores
Texarkana Newspaper	120	Newspapers
Burger King	116	Restaurants
HUMCO Holding Group, Inc.	105	Manufacturers/Processors
Capital One Bank	100	Banking/Financial Services
Regions Bank	100	Banking/Financial Services
Home Depot	99	Retail Store
Applied Control Technology	42	Control devices

Property Tax Comparison

Property Tax in Arkansas is normally expressed as a tax rate per \$1,000 of assessed value while in Texas it is generally expressed at a rate of \$100 of assessed value. For the examples used below the rate of \$100 has been used – In Texas taxes are assessed at 100% of appraised value while in Arkansas it is a rate of 20%.

The examples cited are based on a home valued at \$200,000.

Both states also have homestead exemptions.

Tax Entity	Rate per \$100	Assessment Rates	Tax
Arkansas			
Miller County	.50	20%	\$200
City of Texarkana	1.05	20%	\$420
Texarkana AR ISD	3.89	20%	\$1,556

Texas			
Bowie County	.327	100%	\$654
City of Texarkana	.5831	100%	\$1,166
Texarkana TX ISD	1.339	100%	\$2,678
Pleasant Grove ISD	1.44	100%	\$2,880
Liberty Eylau	1.299	100%	\$2,598

Education

Quality Education and Interscholastic Excellence...

Education at Every Level

Texarkana boasts a commitment to provide quality education from pre-school to graduate school. The educational options abound in the region with 25 public schools and four private schools educating young people ages K-12. The Texarkana area pledges to support education at all levels and considers it an essential component of the quality of life for the entire community, solidifying our future workforce. "Texarkana deserves a standing ovation for its high academic achievement and socioeconomic diversity. Parental involvement is high, and the thrifty administration consistently achieves large results on a tight budget." (Source April 2010: www.forbes.com)

Interscholastic Superiority

Title Town? Yes, Texarkana should come to mind! The movie, "Friday Night Lights" is played out regularly in the fall as teams gear up for battle. The main warfront is fought in pads and helmets while the second skirmish is waged by the bands, drill teams, cheerleaders, flag corps and fans. No matter whom you support or what role they play, sports are a huge part of the Texarkana area. Over the past decades, many high school teams have brought home the coveted culmination of athletic superiority, the State Championship Crown. Every local school district has brought home a state title in current and previous years: Liberty Eylau, Pleasant Grove, Texarkana Arkansas High School, Texas High School and Trinity Christian.

Other sports popular in the area are soccer, softball, baseball, volleyball, swimming, track, golf, tennis and basketball. Local and area athletic teams on both the Texas and Arkansas side produced 23 state championships from May 2009 to May 2010. (Source: Johnny Green, Sports Director for Texarkana Gazette) Texarkana has produced many athletes that



Texarkana Arkansas School District is a place where children are allowed to dream, to learn and to thrive. It's a place for them to realize their goals and prepare for a bright future. (Photo courtesy of TASD.)

have gone on to play on the college, professional, and Olympic levels. Texarkana is committed to preparing students for future employment and higher education through challenging academic programs, while also offering a full array of extracurricular activities.

Texarkana Arkansas School District

The Texarkana Arkansas School District (TASD) had its beginning in 1884 in "the brick school", which was officially named Hays School in 1896. Later, it became Central School and held its first graduation ceremony in 1899. In 1904, due to the increased number of students, the board of directors voted to build two new schools. From this early start, Texarkana Arkansas School District has grown to its present size of over 4,400 students in grades K-12 and ranks 16th in size out of 310 school districts in the state of Arkansas.

The family of educators is committed to creating a supportive, innovative, and academically challenging learning environment that helps young minds see their own potential success. Astronautics, acting, ambassadorships...wherever dreams may inspire

young minds to go, the T ASD Magnet Schools have the personnel, tools, enthusiasm and motivation to help them reach their destinations. From enjoying the benefits of healthy exercise on a beautiful day, to painting a sunny sky, to the science behind predicting that day's weather, to TV production of that weather forecast for a bilingual audience, T ASD Magnet Schools offer units of study as unique as the students.

T ASD's mission is to provide a safe nurturing environment of educational excellence where all belong, all learn, and all succeed. The school district builds a solid educational foundation of core knowledge and skills but presents them in a context that reaches out to students where their interests and talents reside. Educators are as prepared professionally as they are passionate about the work they do and the young futures they help build. Educator training programs are rigorous and innovative, ensuring only the most effective instructional practices.

Standing firmly on the foundation that anyone can make a difference, the school district believes that every person in the Texarkana community has an opportunity to play a key role in the success of the students in the Texarkana Arkansas School District. Whether it's a teacher being a role model, a parent volunteering, a business partnering, a city leader



In 2009 Texarkana AR & TX School Districts ranked #4 on Forbes Magazine's "Best School for Your Housing Buck" in cities where median home value is less than \$100,000.

advocating, or a student preparing to become a world leader, T ASD is the place where anyone can be all of who they want to be.

Source: Texarkana Arkansas School District

Texarkana Independent School District

The proud history and rich traditions of Texarkana Independent School District (TISD) began with the first graduating class of Texas High School in 1889. Over a century later, TISD continues its legacy of excellence in education with strong leadership and high student achievement, which showcases the ever present Tiger Pride.

Currently featuring eleven campuses, TISD provides a quality education for pre-kindergarten through twelfth grade, as well as career and technology and special education opportunities for pre-school and school-age children. Additionally, the District operates Tiger Learning Centers that provide childcare services for children ages three and up. For the 2010-11 school year, the district will look forward to welcoming over 7,000 students to their campuses. Continuous growth has been maintained through a commitment to excellence and strategic planning and programs that continue to capture state and national attention.

TISD's mission is to provide an exceptional education for all learners in a quality environment which nurtures the intellectual, social, cultural and physical development of each student's overall well-being. The District strives to provide a variety of educational opportunities and involvement to the student, allowing for the development of a well-



Texas High School Math & Science Center features 72,000 square feet of science/traditional classrooms and engineering/computer labs, complete with state-of-the-art technology. (Photo courtesy of TISD.)

rounded educational experience.

In addition, TISD believes that a competent, committed and caring staff is essential to a quality education for all children. A quality education includes excellence in teaching; alignment of the written, taught and tested curriculum; and exposure to technology, essential materials and a variety of learning experiences. TISD staff has been a driving force in student achievement. To support instruction, the District has placed a major emphasis on instructional technology, equipping classrooms with state-of-the-art technology and providing staff with continuous professional development in using that technology to support and enhance the delivery of the curriculum. The District also has extended staff development opportunities by creating and supporting professional learning communities designed to meet the needs of all learners.

Texarkana Independent School District continues to look to the future by integrating a global perspective of education. The result is a school district with strong student and community confidence in the quality of our schools and with state and national recognition for our success.

Source: Texarkana Independent School District

Trinity Christian School

Trinity Christian School is committed to partnering with Christian parents in providing a Biblical perspective in the education of their children. The combination of the Christian home, the Christian school, and the Christian church provide a unified whole that enables a 24/7 process of equipping a child to serve Christ. Missing any one of these segments inhibits True Education from occurring. The task of True Education is to develop knowledge of God and His created reality and to use that knowledge in exercising a creative-redemptive dominion over the world in which we live. Such an outcome can be attained only by loving God and communing with Him, resulting in the wholehearted worship of God (Graham, 2003). To Trinity Christian School, True Education is Knowledge of God.



Trinity Christian School serves preschool through twelfth grade, and its staff are highly qualified and called by God to provide a Christian based, academically excellent program of study. Trinity maintains its excellence by accreditation through the Arkansas Nonpublic School Accrediting Association. Trinity's vision is to see our graduates walking with Christ in their homes, workplaces, churches, and communities for the duration of their lives. We invite you to take a closer look at Trinity Christian School and consider if our Christian philosophy of education is a match with your family's values. We welcome you to visit our campus and meet our staff, to learn more about our exceptional Christian academic program, and to discover our various extra-curricular opportunities. We look forward to meeting you and having you as our guest.

Pleasant Grove Independent School District

Children in the Pleasant Grove Independent School District have been served by local schools for over one hundred years. Since 1877, when the first school in the Pleasant Grove area was established, the schools have grown and changed to meet the needs of the students and community. The fifty-five square mile district now includes much of northern Texarkana, Texas.

Pleasant Grove ISD serves 1,950 students in grades pre-kindergarten through twelve with a rich curriculum and a wide range of co curricular and extra curricular activities. Students perform above the state average on Texas assessments, and college entrance exam scores are above both state and national averages. Students, faculty, and staff demonstrate outstanding accomplishments and successes at the local, state, and national levels.

Pleasant Grove ISD has recently completed a \$36,000,000 facilities improvement program which included opening a new campus. Pleasant Grove ISD and each of the campuses are accredited by the Southern Association of Colleges and Schools and the Texas Education Agency. The district is recognized in the Accountability Rating System for Texas Public Schools and earned the highest financial rating in the School Financial Integrity Rating System of Texas.

Mission: The mission of Pleasant Grove Independent



School District, in partnership with the community, is to educate and prepare each student with an excellent foundation upon which to build a future.

St. James Day School

St. James Day School is an independent school affiliated with St. James Episcopal Church in Texarkana, the Diocese of Dallas, and is fully accredited by the Southwestern Association of Episcopal Schools, which is recognized by the State of Texas.

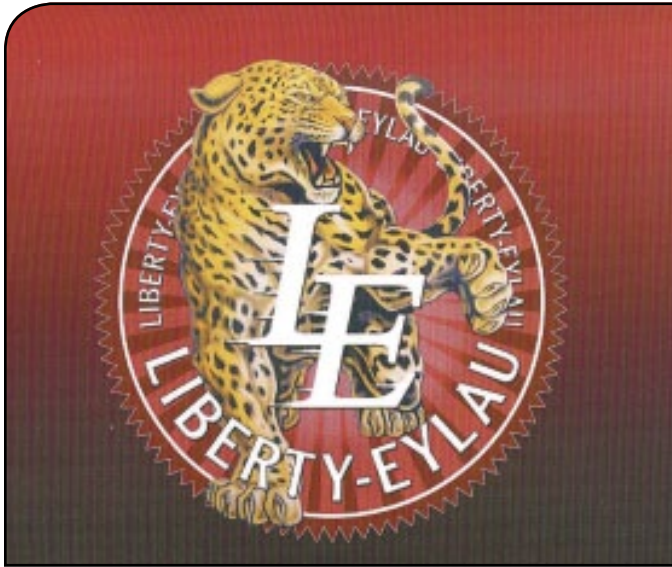
St. James Day School was founded in 1948 and its mission is "to educate students in a safe and nurturing Christian environment that instills high intellect, character, and compassion, while challenging them academically, physically, and spiritually to achieve their highest potential as confident individuals and future leaders." Students develop the ability to reason, think creatively, and to leave St. James with an intellectual curiosity and joy of life long learning that opens the entire universe to them.

The school is located in a safe, secure, and beautiful natural woodland setting on the Texas side of North State Line. St. James is committed to providing a caring, nurturing and high academic educational foundation for pre-school children ages 3 -5, and elementary children in Kindergarten, Primer and grades 1-6.

Liberty -Eylau

Liberty-Eylau Independent School District, founded in 1955, is a school and community dedicated to





student achievement. The graduates are prepared to meet their full potential, instilled with a lifetime desire to learn, and are confident in their ability to succeed. They possess the character to make a difference. Our staff is a team of leaders who is fair, respectful and nurturing in all our dealings. We create an encouraging, supportive learning environment that inspires and motivates students to do their very best. A school district of 2859 students, L-E offers a diversified program of instruction to students, regardless of handicap, race, or creed. L-E has experienced successes in the areas of academics, arts, and athletics.

Higher Education

Higher education is available with associate through doctorate level degrees available at Texarkana College and continuing through Texas A & M University—Texarkana. Both institutions boast low tuition rates and a significant number of scholarship opportunities.

Texarkana College

Texarkana College is a publicly supported, two-year community college that has served the community for more than 80 years. It offers over 50 programs of study that can lead to academic as well as

occupational/technical degrees and certificates. The academic programs at Texarkana College provide the core curriculum for all degrees of higher education, including associate and bachelors, and are fully transferable to four-year institutions. In June 2010, TC was recognized in the top 100 community colleges in the nation for the number of certificates awarded. The student-to-faculty ratio is 22:1 and student enrollment exceeds 4,400 a semester, including students from the Ark-la-tex as well as thirteen foreign countries.

The community college offers Region XIV East Conference baseball, softball, and golf. The Bulldog Baseball Team won their eighth championship in Region XIV East Conference Title in 2010. Thirteen appearances in the Regional Tournaments and two JUCO World Series Appearances give Texarkana College something to be proud of. In addition, the Bulldog Softball Team has been Region XIV East Zone Conference Champions four years, Region XIV Champions two years, and has advanced to NJCAA Nationals twice.

Dormitories are present and are within walking distance of the campus, giving students an opportunity to live and learn in Texarkana. While on campus, several student life clubs and organizations are available including Student Senate, TC Choir, Earth Club, Art, Phi Beta Lambda, TC Student Newspaper, Black Student Association, Phi Theta Kappa, Drama



Texarkana College is conveniently located, just minutes from recreation, shopping and entertainment. (Photo courtesy of TC.)



The 2010 Bulldog Baseball Team won the 2010 Region XIV East Conference Title with a conference record of 20-8. (Photo courtesy of TC.)

Club and Science Club. The 90-acre campus includes a two-acre nature reserve and the college also owns an offsite, 360-acre educational farm.

The Truman Arnold Student Center features a staff and student-driven cafeteria that is open to the public, the Bulldog Bistro. The Bistro serves cook to order breakfast items, hot and cold sandwiches, and lunch and dinner plate specials planned and prepared by the college's Culinary Arts program.

To stay in shape, students have access to facilities in the Pinkerton Center which includes an Olympic-size pool, tennis and racquetball courts, multi-use gym, jogging track, fitness evaluation center and more.

A number of scholarship and financial aid options are available, including the Rising Star Scholarship. This scholarship offers two years free for high school graduates with a family taxable income of less than \$75,000 who are enrolled full time at TC. For more information visit www.texarkanacollege.edu.

Texas A & M University-Texarkana

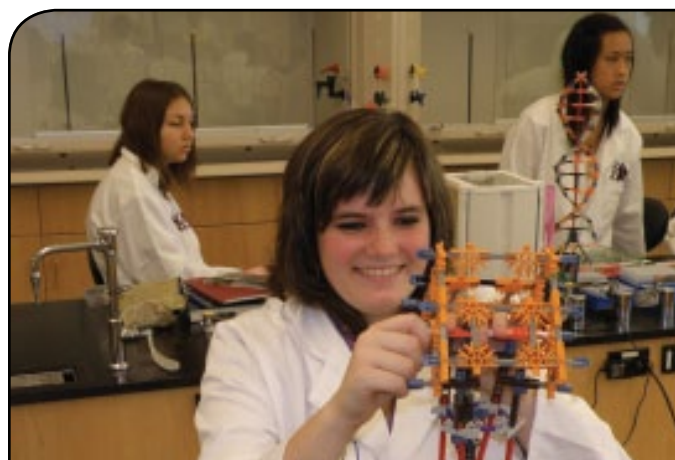
The university is accredited by the Southern Association of Colleges and Schools (SACS) and offers 17 baccalaureate and 11 graduate programs.

In the fall of 2010, the university extended these programs for inaugural offering of freshmen, sophomore, and doctoral programs.

Expansion plans for the university have been underway for the last two years to the new 375 acre Bringle Lake campus just North of Interstate 30. A total of over \$100 million has been dedicated to build a new campus in order to offer a comprehensive university experience. The Science and Technology building was opened in the summer of 2009 and the Multipurpose Library Building (University Center) opened the summer of 2010. The four story 183,000 square feet building hosts a student union, bookstore, classrooms, faculty, staff and administrative offices, library, activity rooms and student support services. In the summer of 2011, Bringle Lake Village is set to open as the university's premier student housing complex. This \$14 million project will include a 300 bed dormitory (as part of Phase 1), pool, outdoor movie area, sand volleyball court, basketball/sports area and an outdoor pavilion with grills.

A total of 93% of the full-time faculty hold a Ph.D. or the highest degree in their field. The full-time faculty to student ratio is approximately 1 to 14 (1 faculty member per 14 students). The university currently holds close to 1,650 enrolled students with plans to support upwards of 2,500 by 2015.

Multiple scholarship opportunities are offered



Faculty to student ration is small at 1:14, and current student enrollment is close to 1,650.

(Photo courtesy of Texas A&M University-Texarkana.)



In Texarkana, SAU Tech offers a high school and college level aviation maintenance technology program at the Texarkana Airport located at 60 Globe Avenue.

including the Eagle Promise that allows students to go to school for free if they are eligible for a Pell grant and their annual family gross income is less than \$40,000. *Source: www.tamut.edu*

The surrounding Texarkana area is also home to the University of Arkansas for Medical Science Area

Health Education Center (AHEC), Cossatot Community College--Ashdown Campus and the University of Arkansas Community College--Hope.

Vocational training is also available through a number of resources including the Texarkana Airframe and Power Plant School through Southern Arkansas University Tech or SAU Tech. This public, two-year college is located in Camden, Arkansas with services in Texarkana and Magnolia. SAU Tech is part of the Southern Arkansas University System. SAU Tech is known for its technical programs and online delivery of more traditional degrees such as business administration and general studies. The college currently enrolls over 2,000 students in both college and high school concurrent credit programs. In Texarkana, SAU Tech offers a high school and college level aviation maintenance technology program at the Texarkana Airport. The program is comprehensive and offers all the training needed for students to be qualified to take Federal Aviation Administration licensing exams. A FAA licensed aviation maintenance technician is highly skilled and ready for employment in the field of aviation maintenance anywhere in the world. *Source: SAU Tech and www.sautech.edu*



SOUTH ELEVATION



WEST ELEVATION

Bringle Lake Village, Texas A & M University-Texarkana's future student housing complex will hold 295 residents and is scheduled to open for occupancy by August 2011. (Rendition courtesy of Texas A & M University-Texarkana.)

Recreation



Swanger Baseball Complex at Spring Lake Park

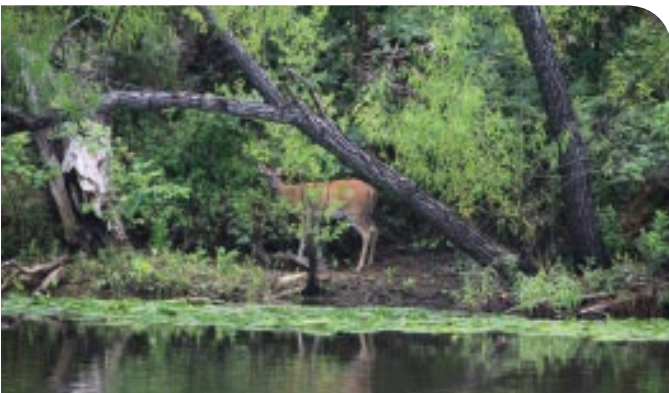
There is a world of choices for the sportsman and hunter in Texarkana. With lush woodlands and some of the country's best fishing at Lake Millwood and family fun at Lake Wright Patman, you can't go wrong. Hiking and camping areas abound with RV facilities to serve you, whether you are backpacking or relaxing in an RV. Enjoy public tennis courts, golf courses, or sit back and enjoy one of our beautiful public parks. The great outdoors has never been so great!

Hunting grounds and competitive fishing are among the best and most ample in the United States. Choices for the outdoorsman are nearly unlimited

in the Texarkana vicinity. Whether you are a sight-seer, hiker, photographer, or gamesman, the lush woodlands are home to a vast variety of wildlife game. White-tail deer, red and grey squirrels, raccoons, rabbits, opossums, red fox, coyotes, bobcats, wild hogs, armadillos and migratory birds are just a few examples of the animals one might encounter in the backwoods of Southwest Arkansas and Northeast Texas.

Some of the country's best fishing can also be found in the Texarkana area. Millwood Lake, just minutes northeast of Texarkana, has produced a largemouth Bass that weighted 16.1 lbs in 1976, although this was caught in a commercial fisherman's net. It is not uncommon while fishing, to spot a 14 foot North American alligator off the main lake lurking behind a bald cypress in a slough.

Wright Patman Lake, located south of Texarkana, offers not only fishing opportunities, but skiing, swimming, camping, bird watching, hiking trails, radio controlled airplane landing strip and ATV course. Whether you want to enjoy the sun's rays while basking next to a lake, or are in search of a trophy catch, the Texarkana area may have just what it takes to satisfy your palate.



White-tail deer are common in this area. Photo taken at Millwood Lake.

Lakes

- **Lake Wright Patman**
U.S. Highway 59 South, 903-838-8781
Activities include camping, picnicking, fishing (catfish, crappie, perch, bass), hiking, nature trails, boating, canoeing, swimming, bird watching, etc.
- **Millwood Lake**
U.S. Highway 71 North to Ashdown, AR, 870-898-2800
Activities include camping, picnicking, fishing, (catfish, bass, crappie, bream), hiking, nature trails, boating, and bird watching.
- **Bringle Lake**
Scott Wright Road off of Richmond Road, North of I-30
Activities include fishing (bass, catfish, bream, crappie), hiking, nature trails, limited boating, bird watching, tennis, volley ball, basketball, (no camping or swimming).



During the winter, many birds migrate to Lake Wright Patman, including Bald Eagles, Pelicans, various ducks and others.

Join the Texarkana Radio Control Flying Club at Ravel Stroman Field at Lake Wright Patman.



Texarkana, Arkansas Side Parks

- Lake Dieffenbacher at Bobby Ferguson Park - 3415 East 50th Street
- Four States Fairgrounds – 3415 East 50th Street
- Ed Worrell Park – 2000 East 35th Street
- Senator Street Park – 2700 Senator Street
- Iron Mountain Park – 1500 Ray Street
- Sandflat/Glendale Neighborhood Center & Park- 209 East 14th Street
- Jefferson Park – 1100 Jefferson Avenue
- Iron Mountain/Ozan Inghram Neighborhood Center – 1101 Couch Street
- Gateway Park & Farmer's Market – 800 Jefferson Avenue
- Kline Park – 416 East 9th Street
- Hazel Street Traffic Triangle – 820 N State Line Avenue
- Walnut Street Fountain & Traffic Island – 701 Walnut Street
- Peyton Park – 845 East Broad Street
- George Williams & Earnest Hill Park – 415 Seibert & 1301 Prestor
- Inghram Pool & Park and Tennis Courts – 2625 Preston Street & 2710 Preston Street
- Hobo Jungle Park – 900 Dudley Street
- Bramble Park & College Hill Neighborhood Center – 1801 Fulton Street
- Vera Bradfield Park & Neighborhood Center – 616 Euclid Street
- Pocket/Broad Street Park – 106 East Broad Street
- College Hill Neighborhood Center – 1002 Ferguson Street

Texarkana, Texas Side Parks

- Bell Park – 3208 Lincoln Street
- Beverly Park – 2612 New Boston Road
- Bringle Lake – 7602 Bringle Lake Road
- Collins Senior Center – 3000 Texas Boulevard
- Ferguson Park – 3000 Texas Boulevard
- Findley Park – 410 Findley Street
- Grady T. Wallace Park – 3419 Leopard Drive
- Karrh Park - 2102 South Ann Street
- Kidtopia – 201 Oak Street
- Scott Joplin Park – 1621 West Street
- Southwest Center – 3222 West 7th Street
- Spring Lake Park – 4303 North Park Road

Source: *Texarkana Parks & Recreation*



Walking path at Lake Dieffenbacher at Bobby Ferguson Park.

Area Walking/Biking Trail

- Nix Creek – Path: Arkansas Boulevard, Jefferson & East 9th
- Bobby Ferguson Park – Loop 245 & I-30
- Lake Wright Patman – US 59 & FM 2148
- Bringle Lake – 7602 Bringle Lake Road

Area RV Parks

Four States Fairgrounds
Exit 2 off I-30 to Loop 245, 800-776-1836 or
870-773-2941

Millwood State Park
Highway 32, 9 miles east of Ashdown, AR
870-898-2800

Rocky Point Park – On Lake Wright Patman
Year round accommodations – U.S. Highway 59
South, Corps of Engineers, 903-796-2419

Shady Pines RV Park
10010 W 7th ST, 903-832-1268

Texarkana KOA
I-30 & Highway 71, Information 903-792-5521,
Reservations 888-562-5697

Area Campgrounds

Atlanta State Park – On Lake Wright Patman
Year round accommodations – FM 1154,
903-796-6476

Beard's Bluff – On Millwood Lake
Year round accommodations – Highway 32, 13 miles
east of Ashdown, AR, 870-898-3343 (ext. 3)

Piney Point – On Lake Wright Patman
(Open March-September) U.S. Highway 59 South,
Corps of Engineers, 903-796-0684

Malden Lake Park
Year round accommodations, South of Maud, TX,
903-585-2497

Millwood Overlook – On Millwood Lake
Year round accommodations – Highway 32, 13 miles
east of Ashdown, AR, 870-898-3343 (ext. 3)