

# Shimizu Kogyo

## New Factory

**TAKENAKA**  
Planners, Builders

TAKENAKA CORPORATION (U.S.A.)  
200 West Lincoln Street  
St. Louis, Missouri 63103

GENERAL NOTES

**NOTICE**  
THIS DRAWING & THE INFORMATION CONTAINED HEREIN ARE THE PROPERTY OF TAKENAKA CORPORATION. IT SHALL BE RETURNED TO TAKENAKA CORPORATION IMMEDIATELY UPON COMPLETION OF THE PROJECT OR AS SOON THEREAFTER AS REQUESTED BY TAKENAKA CORPORATION. IT SHALL NOT BE REPRODUCED IN WHOLE OR IN PART WITHOUT THE WRITTEN CONSENT OF TAKENAKA CORPORATION.

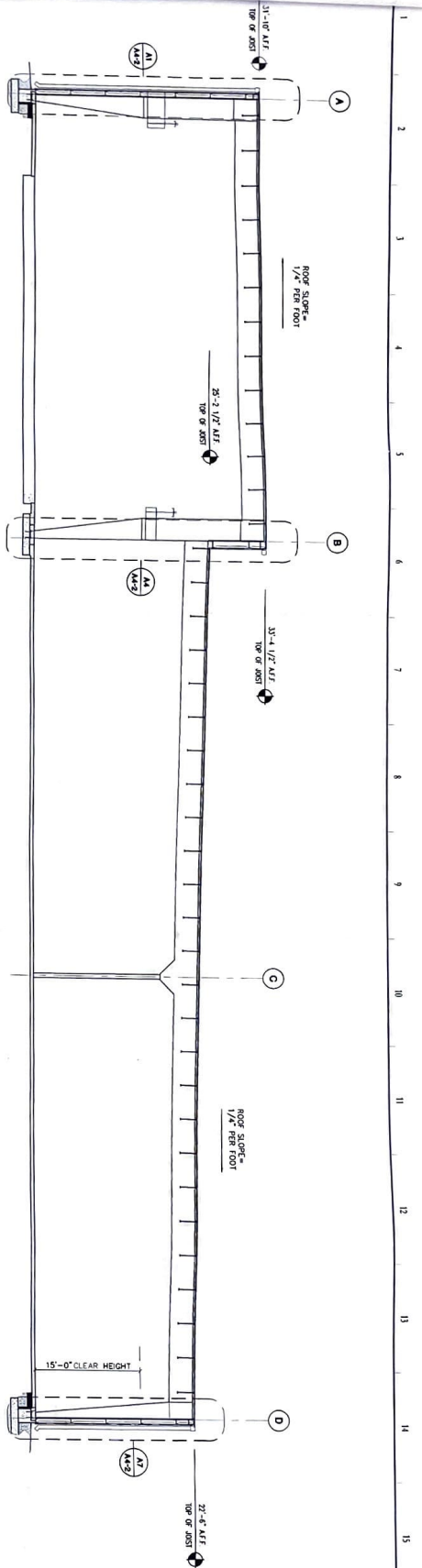


**FORCUM LANNOM**  
CONTRACTORS, LLC  
500 West Park Drive, Dumas, Tennessee 38620  
PH: (731) 287-4100

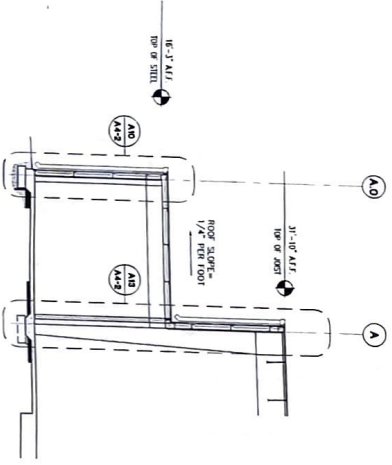
**New Manufacturing Facility**  
**SHIMIZU KOGYO**

OSCEOLA, ARKANSAS  
BUILDING SECTIONS

PROJECT TITLE  
PROJECT NO. A4-1  
DATE: 02-18-04



**H1 BUILDING SECTION**  
1/8" = 1'-0"



**1 BUILDING SECTION**  
1/8" = 1'-0"

2 3 4 5 6 7 8 9 10 11 12 13 14 15