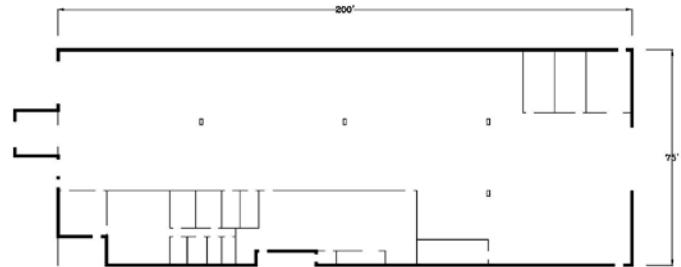


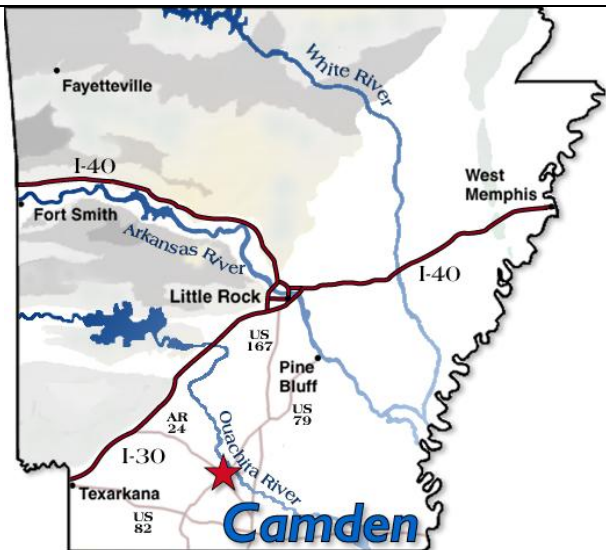
Camden Industrial Park Manufacturing & Office Building

570 Ben Lane
Camden, Arkansas

Available 15,237 SF metal building (150' x 100') with stone and block façade. Located on 3.1 acres with 75 paved parking spaces. Additional adjoining acreage is available. Adjacent to Arkansas Fish & Game District Office and Army National Guard Armory. Quick access to 4-lane US 79 with a broadband fiber trunk line both adjacent to business park location. Built offices totaling 3,000 SF. Reception area with adjoining large room and kitchen area. Building has 3 drive-in doors and one loading dock. Central heat & air. Entergy electric service and CenterPoint Energy gas service. Municipal water and sewer; 6 toilets. Wet sprinkler system throughout building. Drop ceiling with 8' clearance. 6" concrete floors.



Call 870-818-3778 or email at
caidcark@yahoo.com



Contact Information

Marketing contact is James Lee Silliman,
Executive Director of the Ouachita
Partnership for Economic Development.

Call 870-818-3778 or email @
caidcark@yahoo.com

www.teamcamden.com