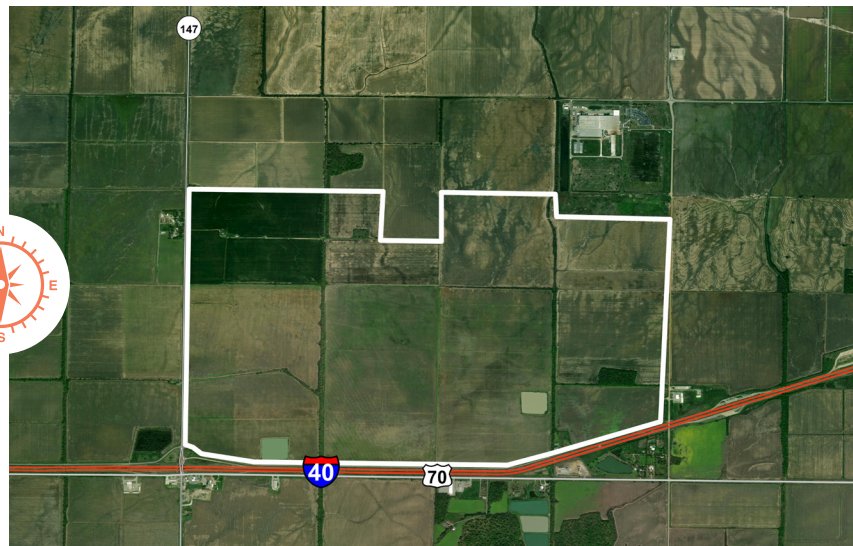
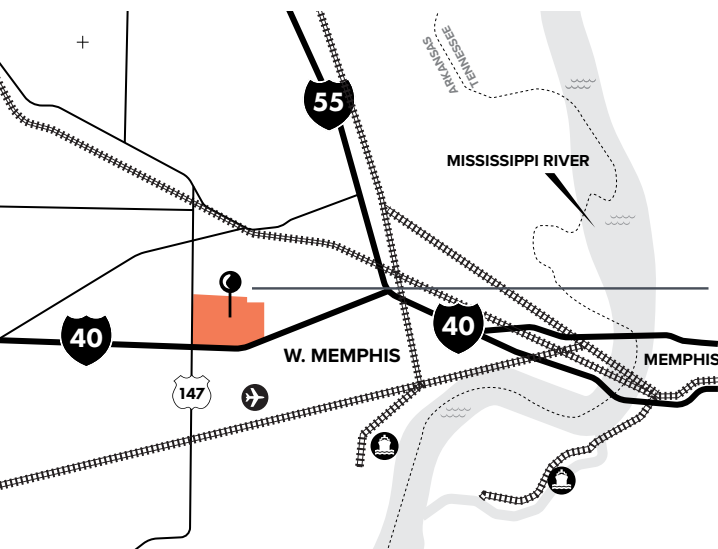




WestMemphisMegasite.com

The West Memphis I-40 Mega site is a certified Entergy *Select Site*. This largest site in Arkansas is an ideal location for a large industrial user, with direct access to I-40 which runs east to west across the U.S. from North Carolina to California and I-55 which runs north and south from Chicago to New Orleans. The site has a Union Pacific rail line and intermodal facility less than two miles north. Cost and timing estimates are available for all utility extensions.

1800
Total acres of flat developable land



West Memphis Mega Site



HIGHLIGHTS

Transportation Infrastructure

 **INTERSTATES**
I-40
I-55

DISTANCE
0.0 Miles
3.5 Miles

 **RAIL**
Union Pacific RR


DISTANCE
1.7 Miles

 **HIGHWAYS**
State Hwy 147
US Hwy 70

DISTANCE
0.0 Miles
0.1 Miles

 **NAVIGABLE WATER**
Mississippi River

DISTANCE
5.2 Miles

 **AIRPORT**
West Memphis Muni (AWM)
Memphis International Airport

DISTANCE
1.7 Miles
24 Miles


 **PORTS**
West Memphis Port
Memphis Port

DISTANCE
5.2 Miles
20 Miles

Utility Providers

 **ELECTRICITY**
Provider Entergy

 **NATURAL GAS**
Provider Summit Utilities

 **FIBER-OPTIC**
Provider AT&T

 **TELECOMMUNICATIONS**
Provider AT&T

 **WATER & SEWER**
Provider West Memphis Water

Demographics

 **DISTANCE TO NEAREST CITY**
Memphis 16 miles

 **POPULATION (ESRI)**
60 Minute Drive Time 1,337,941

 **2020 AVERAGE HOUSEHOLD INCOME (ESRI)**
60 Minute Drive Time \$78,304

 **2020 PER CAPITA INCOME (ESRI)**
60 Minute Drive Time \$29,500

SITE MAPPING



WATCH SITE VIDEOS



360 PHOTO TOUR



CERTIFICATION DOCUMENTS



West Memphis Economic Development

Nick Coulter, Project Manager
ncoulter@westmemphisar.gov
O: 870.732.7503

Ward Wimbish, Director
wwimbish@westmemphisar.gov
O: 870.732.7507

Entergy Arkansas Project Managers

Chris Murphy
cmurph4@entergy.com
C: 501.786.7173

Bentley Story
wstory1@entergy.com
C: 870.270.0712

Katherine Holmstrom
kholmst@entergy.com
C: 870.830.2308



West Memphis Mega Site



Crittenden County, Arkansas