

# FOR LEASE

## WESTLAKE CORPORATE PARK

1701 Centerview Drive  
Little Rock, AR 72211

AVAILABLE NOW!



### PROPERTY

- ▶ Redding Building
- ▶ Suite 324

### SIZE

- ▶ 692 SF ±

### PRICING

- ▶ \$19.30/SF Full Service

### OTHER

- ▶ Easily accessible WLR location
- ▶ Class A office park
- ▶ Free parking
- ▶ Professional on-site management
- ▶ Conference room facilities
- ▶ On-site restaurant

#### Agency Disclosure

*Irwin Partners is the agent for the owner of the property described herein. All information contained herein is secured from sources we believe to be reliable. However, no information is guaranteed in any way. Any reproduction of this material is prohibited without written consent of Irwin Partners. (116)*



[irwinpartners.com](http://irwinpartners.com)

#### CONTACT

Greg Joslin, SIOR

#### CALL

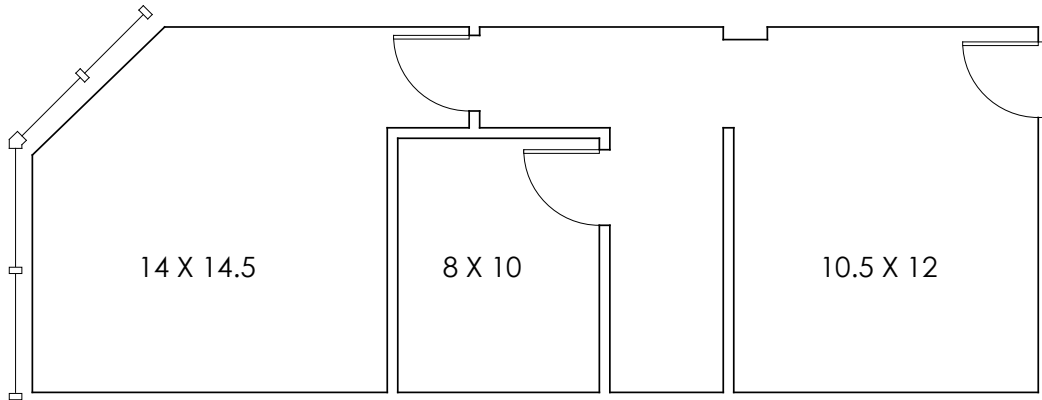
501.225.5700

#### EMAIL

[gjoslin@irwinpartners.com](mailto:gjoslin@irwinpartners.com)



[irwinpartners.com](http://irwinpartners.com)

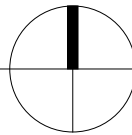


## FLOOR PLAN



APPROX 692 RSF

NORTH



September 25, 2013

Suite 324 - Redding Building  
WestLake Corporate Park  
Little Rock, Arkansas

**Smith Associates**  
Architects, P.A.

2701 Kavanaugh Blvd, Suite 208  
Little Rock, AR 72205