

# TIMBER & FOREST INDUSTRY REPORT

ARKANSAS  
INC



# TABLE OF CONTENTS

INTRODUCTION .....	3
THE ARKANSAS WOOD BASKET: BY THE NUMBERS .....	4
A HISTORY OF GROWTH & SUSTAINABILITY.....	6
A TIMBER-READY WORKFORCE .....	8
ECONOMIC IMPACT (2023) .....	11
Forest Production Exports (2021-2023) .....	12
Largest Forest Product Employers in Arkansas (300+ Employees) .....	13
TIMBER AND FORESTRY ANNOUNCEMENTS.....	14
MAJOR FOREST PRODUCT PRODUCTION COMPANIES IN ARKANSAS.....	15
ARKANSAS ADVANTAGES.....	16
Tax Incentives & Programs .....	16
Sales Tax Exemptions & Reductions .....	17
Grants/Funding .....	18
Training/Other .....	19
Living in Arkansas .....	20
CONTACT .....	21

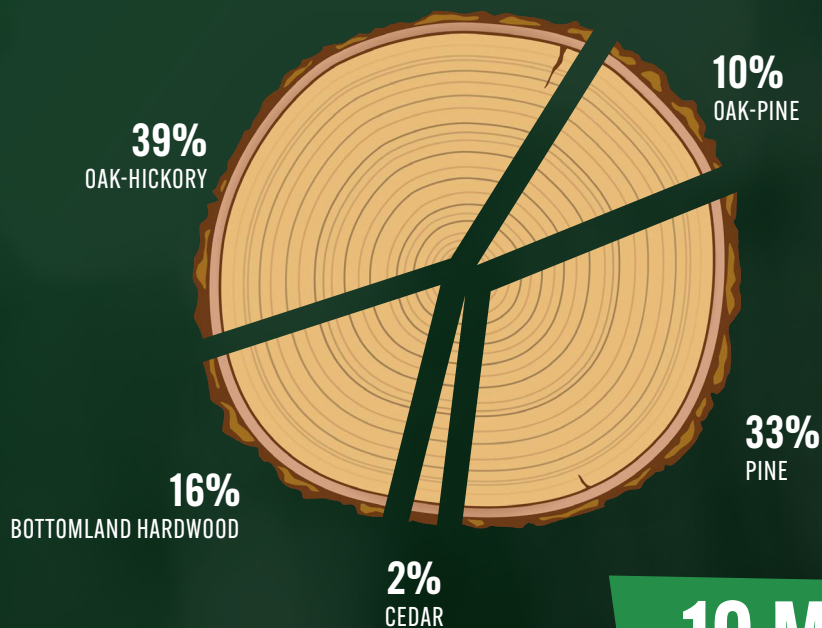
# INTRODUCTION

Surging economic development and hundreds of new jobs are coming to the state of Arkansas because of the influx of companies seeking to take advantage of the state's placement within the nation's wood basket. Arkansas is at the heart of this timber-rich area of the country, due to much of the state being covered by 19 million acres of forestland, or more than half of the total area of the state. This is having a huge impact on the state's economy, timber and paper products companies from around the world, and the lives of the many families living in the area who are seeing an increase in jobs created by those companies.

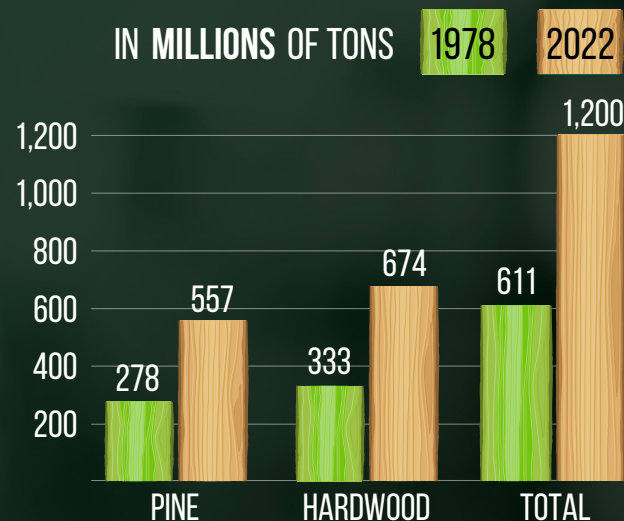


# THE ARKANSAS WOOD BASKET: BY THE NUMBERS

## 19 MILLION\* ACRES OF FORESTLAND



## FOREST VOLUME INCREASE



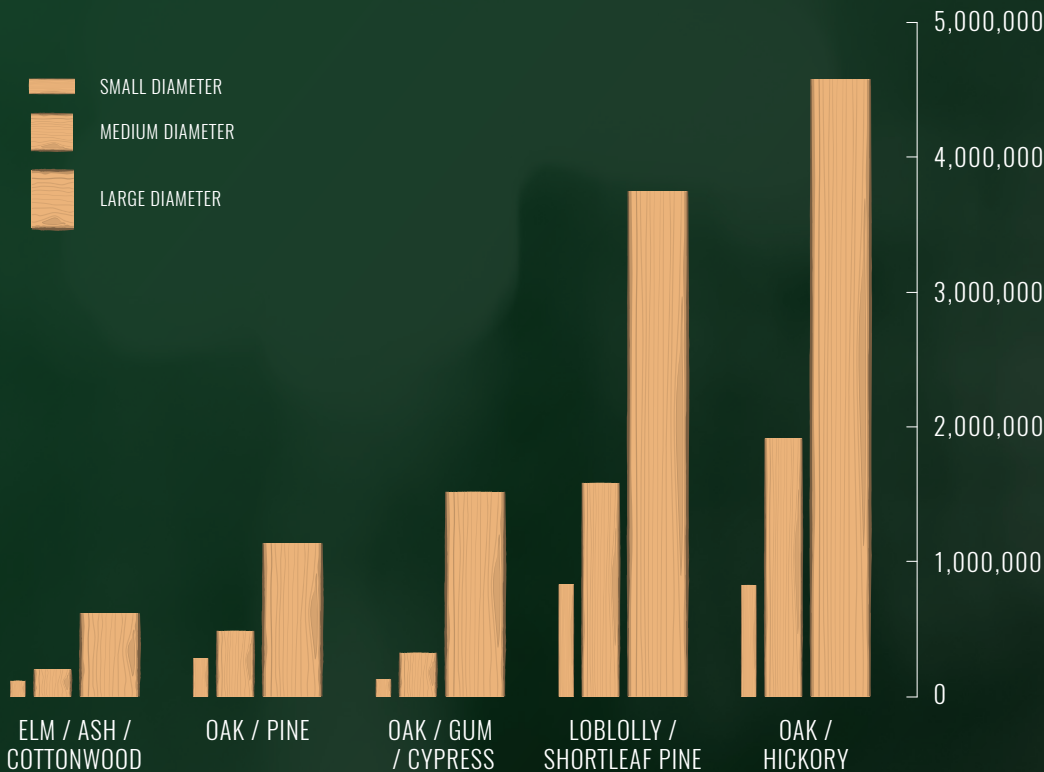
**19 MILLION\***  
TOTAL ACRES OF FORESTLAND

**56.6%**  
OF THE STATE'S  
TOTAL LAND AREA

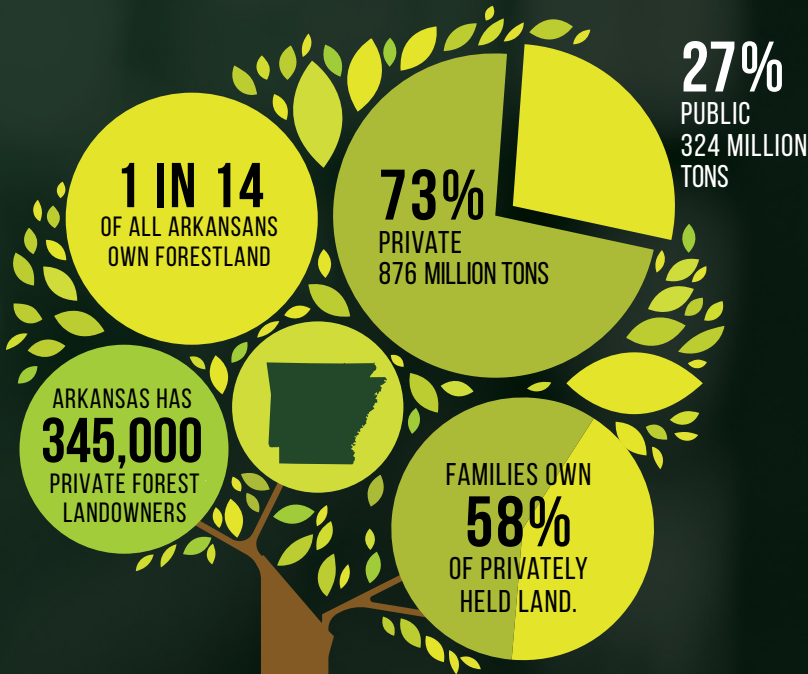
US Forest Service  
AR Forest Inventory & Analysis, AR Department of Agriculture  
\*Value rounded up to 19 Million. Actual value is 18.866 Million



FORESTLAND ACREAGE BY SPECIES AND DIAMETER



US Forest Service  
State and Private Forest Fact Sheet Arkansas 2024  
University of Arkansas at Monticello - Arkansas Center for Forest Business, 2024





# A HISTORY OF GROWTH & SUSTAINABILITY

Arkansas has an impressive track record when it comes to maintaining its timber resources, and it isn't showing any signs of slowing down.



LARGE-SCALE INVESTMENT IN TREE PLANTING TOTALED APPROXIMATELY  
**169,807 ACRES** FOR THE 2020 PLANTING SEASON,  
in addition to other professional forest management measures to improve timber productivity,  
wildlife habitat and population balance, watershed protection and overall forest health.

*(US Forest Service, 2020)*



Arkansas is **#2**  
in the South for  
the total number  
of seedlings  
grown

and **#1** in the South for  
the number of hardwood  
seedlings grown

*(Scott Enebak, Southern Forestry Nursery Management Cooperative, Auburn University)*





AVERAGE ANNUAL LOSS TO WILDFIRES IN 2023 WAS  
**5,659 ACRES**, OR ROUGHLY 0.02% OF THE STATE'S  
TOTAL FORESTLAND ACREAGE

*(Source: National Interagency Fire Center Historical Year-End Fire Statistics by State)*





# A TIMBER-READY WORKFORCE

In the wood basket of Arkansas, the forest products industry provides more than **50,803 DIRECT AND INDIRECT JOBS**, at nearly 500 locations, largely in rural areas, with average wages slightly lagging behind the national average wage index. Every forestry job creates **2.1 ADDITIONAL JOBS** in Arkansas, and forestry contributes **4.1 PERCENT** of the state's economy.

Arkansas' manufacturing workforce offers paper and timber companies access to a well-qualified and affordable workforce.


*Sources: University of Arkansas at Monticello, Arkansas Center for Forest Business; Lightcast*

 **11.8%** OF THE STATE'S WORKFORCE  
IS EMPLOYED IN MANUFACTURING

LABOR FORCE OF  
 **1.36 MILLION** STRONG

 **4TH HIGHEST** PERCENTAGE OF MANUFACTURING  
EMPLOYMENT IN THE SOUTH AND **9TH HIGHEST** IN THE NATION

 **13TH** (5.1%) LOWEST  
UNION MEMBERSHIP RATE IN THE U.S.

ARKANSAS IS HOME TO **26** FOUR-YEAR  
COLLEGES AND UNIVERSITIES AND  
 **23** TWO-YEAR PUBLIC COLLEGES

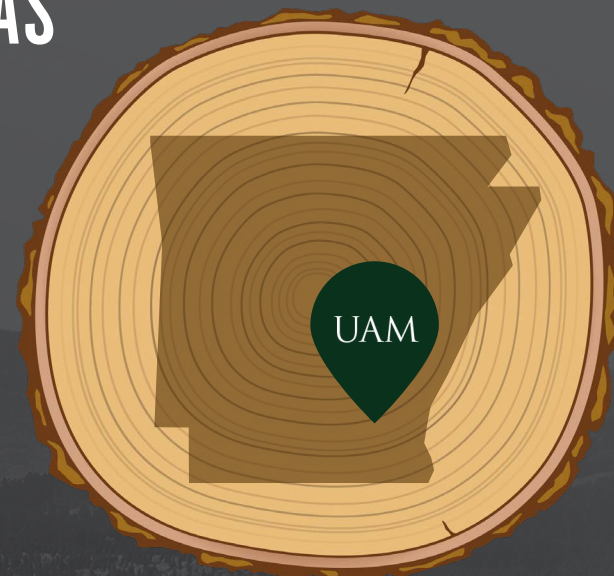
*Sources: Bureau of Labor Statistics; Unionstats*



# TRAINING THE TIMBER TRADE IN ARKANSAS

## University of Arkansas at Monticello (UAM) College of Forestry, Agriculture and Natural Resources

Founded in 1945, the College of Forestry, Agricultural and Natural Resources is the only school of forestry in the state. Located in southern Arkansas, the college is housed in 45,500 square feet of teaching and laboratory facilities. UAM owns **1,650 ACRES** of land used for teaching and learning.



## UAM Offers the Following Degrees in Forestry:

- Associate of Science in Natural Resources Management
- Associate of Applied Science in Forest Technology
- Associate of Science in Agriculture
- Associate and Bachelor of Science in Land Survey Technology
- Bachelor of Science in Natural Resources Management with options in:
  - Forestry
  - Wildlife Management and Conservation
  - Geospatial Science
  - Communications in Natural Resources
  - Environmental Science
- Bachelor of Science in Agriculture, with options in:
  - Agriculture Business
  - Animal Science
  - Plant & Soil Science
  - Site-Specific Management
  - General Agriculture
  - Pre-Vet
- Master of Science in Forest Resources, with emphasis in:
  - Forest Science
  - Wildlife Ecology & Management
  - Geospatial Science
  - Natural Resources Management



While the University of Arkansas at Monticello is home to the state's only School of Forestry and Natural Resources, there are a multitude of opportunities across the state to bring up and maintain a strong timber workforce. Plus, most colleges and universities in Arkansas offer agribusiness, biology and environmental science degrees, providing an educated labor pool in other fields related to forestry and timber.

### Colleges that have a 2+2 arrangement with UAM CFANR for a Bachelor of Science in Forestry/Wildlife Management:

---

- Phillips Community College of the University of Arkansas
- University of Arkansas Community College at Hope-Texarkana
- Cossatot Community College of the University of Arkansas
- University of Arkansas Community College at Morrilton
- Arkansas State University Jonesboro
- Arkansas Tech University
- Southern Arkansas University Tech

### Technical Training Programs applicable to the forest industry available at University of Arkansas at Monticello(McGehee and Crossett):

---

- Arkansas Heavy Equipment Operator Training Academy ([AHEO-TA](#))
- Electromechanical Maintenance Technology [technical certificate program at UAM-Crossett](#). Graduates from this program are highly desired for employment as Electronics and Instrumentation Technicians at paper mills and sawmills.
- The University of Arkansas at Monticello maintains the [Arkansas Forest Resources Center](#)
- The University of Arkansas at Monticello houses the [Arkansas Center for Forest Business](#).



# ECONOMIC IMPACT (2023)

Direct Employment: **26,778**

Direct, Indirect, and Induced Employment: **50,803** (2.1 multiplier)

Annual Value Added Impact: **\$6.1B+**

Annual Payroll: **\$1.7B**

Average Compensation: **\$61,626**

*Arkansas Center for Forest Business 2023, University of Arkansas at Monticello  
[uamont.edu/academics/CFANR/forestbusiness/USForestryEconomicContributionbyState20230109.pdf](http://uamont.edu/academics/CFANR/forestbusiness/USForestryEconomicContributionbyState20230109.pdf)*

---

Value of Standing Timber: **\$12.6B**

*(Senate.arkansas.gov)*

**#2** Economic Impact of Forestry

*(US Forest Service)*

**#1** Economic Impact Among Southern States

*(Senate.arkansas.gov)*

Estimated Annual State and Local Taxes: **\$79M**

*(afandpa.org/node/2172)*

**26,778**  
**SKILLED**  
**WORKERS**

EMPLOYED IN TIMBER, PAPER  
PRODUCTS AND RELATED INDUSTRIES





## FOREST PRODUCTION EXPORTS (2021-2023)

Commodity	2021	2022	2023	Top 3 Countries
<b>Totals, All Exports</b>	\$5,586,389,981	\$5,907,113,898	\$6,450,277,790	Canada, Mexico, Japan
<b>Totals, All Forest Products</b>	\$287,510,908	\$331,759,598	\$483,471,063	Mexico, China, Turkey
<b>Pulp of Wood or Other Fibrous Cellulosic Material; Recovered Paper and Paperboard</b>	\$74,588,735	\$47,615,964	\$242,830,342	Mexico, Turkey, China
<b>Paper and Paperboard; Articles of Paper Pulp, Paper or Paperboard</b>	\$192,476,665	\$226,860,093	\$220,518,638	Canada, Mexico
<b>Wood and Articles of Wood</b>	\$13,888,720	\$14,710,124	\$15,670,656	Mexico, Canada, China
<b>Printed Books, Newspapers, Pictures, and Other Printed Products</b>	\$6,492,334	\$42,470,576	\$4,442,286	Canada, United Kingdom, Mexico
<b>Cork and Articles of Cork</b>	\$64,454	\$26,350	\$9,141	Germany, Canada
<b>Live Trees and Other Plants</b>	N/A	\$73,621	N/A	Canada, Mexico

Source: Global Trade Atlas



## LARGEST FOREST PRODUCT EMPLOYERS IN ARKANSAS (300+ EMPLOYEES)

Company	Manufacturing Locations	Employment Code	Ownership
Georgia-Pacific	Crossett, Fordyce, Fort Smith, Gurdon	H	US
Rockline	Springdale, Booneville, Russellville, Lowell	H	US
Anthony Timberlands, Inc.	El Dorado, Sheridan, Magnolia, Beadern, Malvern, Mount Holly, Beirne, Hope	H	Canada
Westrock Corporation	Conway, Harrison, Rogers, Fort Smith, Crossett	H	US
International Paper Company	Fort Smith, Russellville, Gurdon, Conway	H	US
PotlatchDeltic	Waldo, Ola, El Dorado, Prescott, Warren	H	US
Weyerhaeuser	DeQueen, Emerson, Dierks, Crossett, Magnolia, Sheridan	H	US
Hixson Lumber Sales	Pine Bluff, Magnolia, Plumerville, Rison, Russellville, Casscoe	G	Canada
Evergreen Packaging	Pine Bluff	G	New Zealand
Clearwater Paper	Arkansas City, McGehee, Warren	G	US
Domtar Industries, Inc.	Ashdown	G	Canada
Green Bay Packaging	Morrilton	G	US
West Fraser, Inc.	Mansfield, Russellville, Huttig, Leola	G	Canada
Bryce Corporation	Searcy	F	US
Signode Industrial Group	Fordyce, Sheridan, Benton	F	US
Oldcastle APG, Inc.	Springdale	F	Ireland

**Employment Code: F=300-499, G=500-999, H=1,000-2,499, I=2,500+**



# TIMBER AND FORESTRY ANNOUNCEMENTS



DECEMBER 2023

Norwegian paper packaging company Elopak announced a new facility to be located at the Little Rock Port. They plan to hire **156 EMPLOYEES** and invest **\$95 MILLION**.



APRIL 2022

Canfor Corporation is investing **\$131 MILLION** to significantly upgrade and expand its sawmill and planer facility located in Urbana in Union County, Arkansas.



APRIL 2022

Independent Stave Company is developing a state-of-the-art mill in Batesville to produce staves for bourbon and wine barrels. The company plans to invest **\$35 MILLION** in the facility and create **57 NEW JOBS**.



APRIL 2022

Bryce Corporation plans to invest **\$86.5 MILLION** to expand its operations in Searcy, Arkansas. This expansion is part of the company's five-year strategic growth plan and is expected to create **142 NEW JOBS**.



DECEMBER 2021

Resolute Forest Products has added **168 NEW JOBS** in the state over the past two years and is investing in its two Arkansas operations through a combined capital program of over **\$35.5 MILLION**.

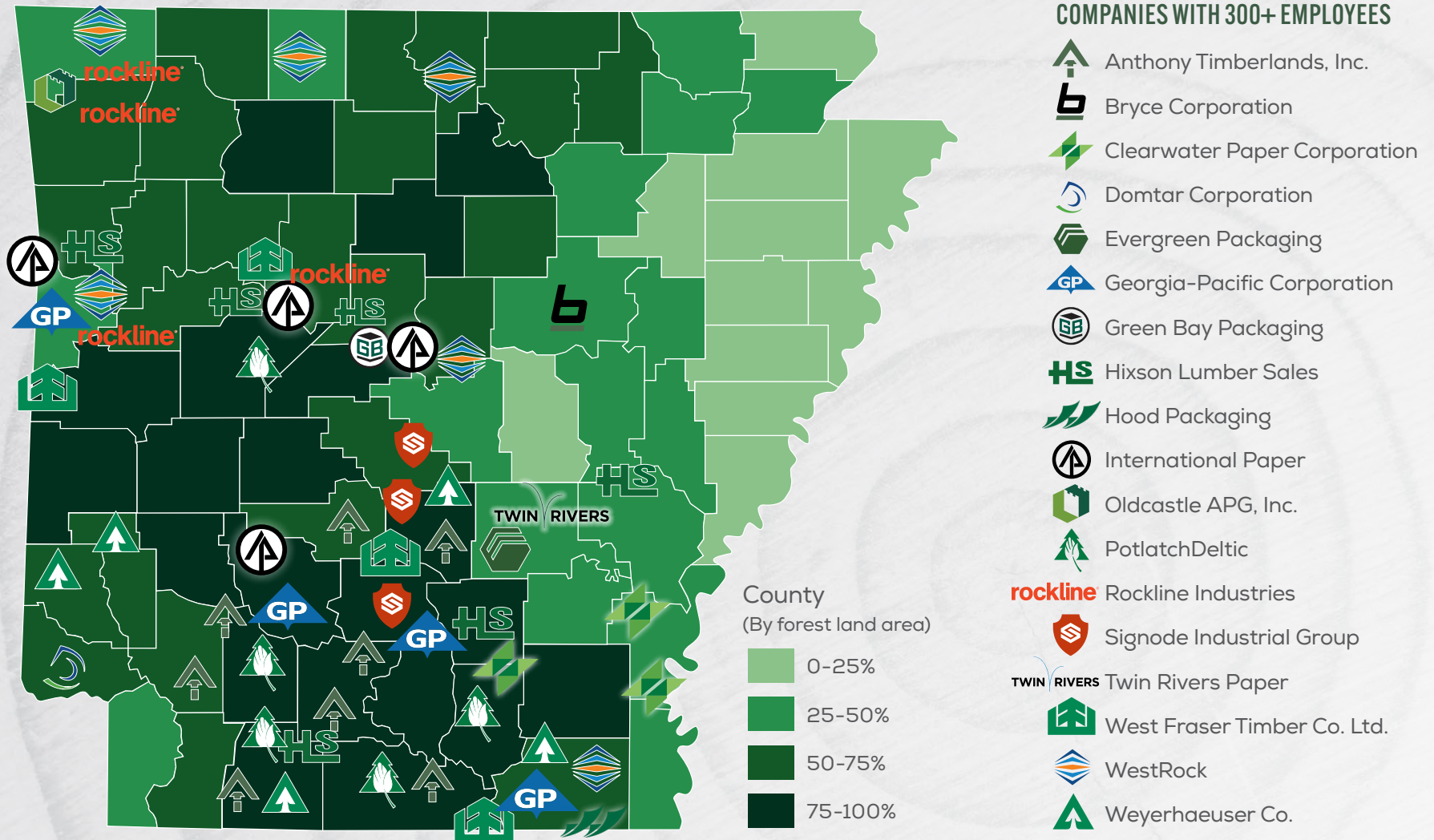


DECEMBER 2021

Trex Company announced plans to develop a new multi-faceted production site in Little Rock, Arkansas. Trex expects to invest **\$397 MILLION** over the next five years and create **545 JOBS**.



# MAJOR FOREST PRODUCT PRODUCTION COMPANIES IN ARKANSAS



Source: [agriculture.arkansas.gov/wp-content/uploads/2022/05/2021-Forest-Facts-of-AR-1.pdf](https://agriculture.arkansas.gov/wp-content/uploads/2022/05/2021-Forest-Facts-of-AR-1.pdf)



# ARKANSAS ADVANTAGES

## Tax Incentives & Programs

The **TAX BACK PROGRAM** provides sales and use tax refunds on the purchase of building materials and machinery and equipment in conjunction with an approved project. Tax Back requires a minimum investment of \$100,000 for a new construction, expansion or modernization project approved by AEDC. This program also requires a job creation agreement under the Advantage Arkansas or Create Rebate programs.

**ADVANTAGE ARKANSAS** offers a state income tax credit for job creation based on the payroll of new, full-time, permanent employees hired as a result of the project. In order to qualify for the Advantage Arkansas program, the proposed average hourly wage of the new employees hired as a result of the project must be equal to or greater than the lowest county average hourly wage. The Advantage Arkansas income tax credit is earned each tax year for a period of five years.

**CREATE REBATE** provides annual cash payments based on a company's annual payroll for new, full-time, permanent employees. To qualify, the company must create a minimum of \$2 million annually in new payroll. The minimum payroll must be met within 24 months of the effective date of the financial incentive agreement.

**ARKANSAS® FREEPORT LAW** provides that raw materials and finished goods in transit or awaiting shipment to out-of-state customers are exempt from property tax.



## Sales Tax Exemptions & Reductions

---

THE FOLLOWING MAY BE ELIGIBLE FOR SALES TAX EXEMPTIONS OR REDUCTIONS:

- Machinery and equipment used directly in manufacturing and purchased for a new manufacturing facility or to replace existing machinery or equipment
- Machinery and equipment or replacement parts purchased to modify, replace or repair manufacturing machinery and equipment
- Machinery and equipment required by Arkansas law to be purchased for air- or water- pollution control
- Property that becomes a recognizable, integral part of property manufactured, compounded, processed, or assembled for resale
- Catalysts, chemicals, re-agents and solutions consumed or used in producing, manufacturing, fabricating, processing, or furnishing articles of commerce at manufacturing or processing plants or facilities
- Machinery, new and used equipment, and related attachments that are sold to or used by a person engaged primarily in the harvesting of timber
- Electricity and natural gas used by manufacturers in the manufacturing process is subject to a reduced state sales and use tax rate of 0.625 percent



### Grants/Funding

---

The **QUICK ACTION CLOSING FUND** is a discretionary fund that allows the Governor to provide funds for infrastructure, training, and other capital expenditures for projects creating, expanding, and retaining employment in Arkansas.

The AEDC administers the federally-funded state **COMMUNITY DEVELOPMENT BLOCK GRANT PROGRAM** (CDBG) for Arkansas. CDBG funds may be loaned to eligible companies for fixed-asset financing on projects that create jobs for low- to moderate-income families. Examples of eligible activities for this set-aside loan program include acquisition of property, purchase of equipment, leasehold improvements, and construction or expansion of buildings or physical plants. Grants may be made to qualifying cities or counties for projects that will benefit persons of low to moderate income, eliminate conditions of slum and blight, or address an urgent community need such as infrastructure.

**INDUSTRIAL REVENUE BONDS** provide manufacturers with competitive financing. Interest on tax-exempt issues, which is normally 80 percent of prime, may vary depending on terms of the issue.



### Training

AEDC's Customized Training Grants are flexible and highly customizable, providing reimbursement for both on- and off-site training for newly created positions related to an expansion or new location. Pre-employment training, new employee orientation, on-the-job training, and/or skills upgrades for new positions qualify under this program.

### Other Advantages

- Arkansas has one of the most progressive **WORKERS' COMPENSATION PROGRAMS** in the nation, with more than 900 certified insurance underwriters
- **UNION MEMBERSHIP** rate of 5.2%, tied for 9th best among US states
- **COST OF LIVING INDICES** that are among the lowest in the nation



## Living in Arkansas

- Arkansas has the **SECOND-LOWEST COST OF LIVING** in the country, with lower-than average housing and the thirteenth-lowest industrial electricity prices *(C2ER)*
- Arkansas has the **THIRD-LOWEST HOME PRICES** in the country *(The Ascent)*
- Arkansas is the **#4** state for inbound movers in 2023 *(United Van Lines)*
- The average commute time in Arkansas is just **21.6 MINUTES**
- From the Crystal Bridges Museum of American Art in Bentonville, to the Murphy Arts District in El Dorado, there's something exciting going on in every corner of the state
- Arkansas ranks **18TH** among the 50 states in the number of National Board Certified Teachers and is home to 49 colleges and universities *([nbpts.org/wp-content/uploads/2024/01/2023\\_State\\_Rankings\\_New.pdf](https://nbpts.org/wp-content/uploads/2024/01/2023_State_Rankings_New.pdf))*
- Since 2015, Arkansas has seen a **2,033 PERCENT INCREASE** in high school students taking computer science courses *([adecm.ade.arkansas.gov/ViewApprovedMemo.aspx?Id=5322](https://adecm.ade.arkansas.gov/ViewApprovedMemo.aspx?Id=5322))*
- Arkansas is geographically diverse, with the alluvial valleys of the Arkansas and Mississippi rivers, mountains, forests, many lakes, rivers and bayous
- Outdoor recreation is a part of life for many Arkansans; it's called **THE NATURAL STATE** for good reason





## CONTACT

.....



**CLINT O'NEAL, CEO**

*Executive Director*

501-682-7350

[coneal@arkansasedc.com](mailto:coneal@arkansasedc.com)



**OLIVIA WOMACK**

*Director, Business Development*

501-682-5275

[l.olivia.womack@arkansasedc.com](mailto:l.olivia.womack@arkansasedc.com)



**RICHARD EBERLE**

*Project Manager*

501-682-7313

[richard.eberle@arkansasedc.com](mailto:richard.eberle@arkansasedc.com)

[ArkansasEDC.com](https://ArkansasEDC.com)