

Shimizu Kogyo

New Factory

TAKENAKA
Planners, Builders

TAKENAKA CORPORATION (U.S.A.)
1000 North 17th Street, Suite # 100
Scottsdale, Illinois 60076

GENERAL NOTES:

NOTICE
THE GRADING & SUBMITTALS CONTRACT AND THESE ARE THE EXCLUSIVE PROPERTY OF TAKENAKA CORPORATION. NO PART OF THIS CONTRACT SHALL BE REPRODUCED OR TRANSMITTED IN ANY FORM OR BY ANY MEANS, WITHOUT THE WRITTEN CONSENT OF TAKENAKA CORPORATION.



| | | |
|-----------|---------|---------------------|
| 1 | 3-18-04 | REVISED PER ADD. PI |
| REVISIONS | | |

FORCUM LANNOM
CONTRACTORS, LLC
280 West Third Street, Suite 200
Fayetteville, Arkansas 72701
PH: 479-783-7200

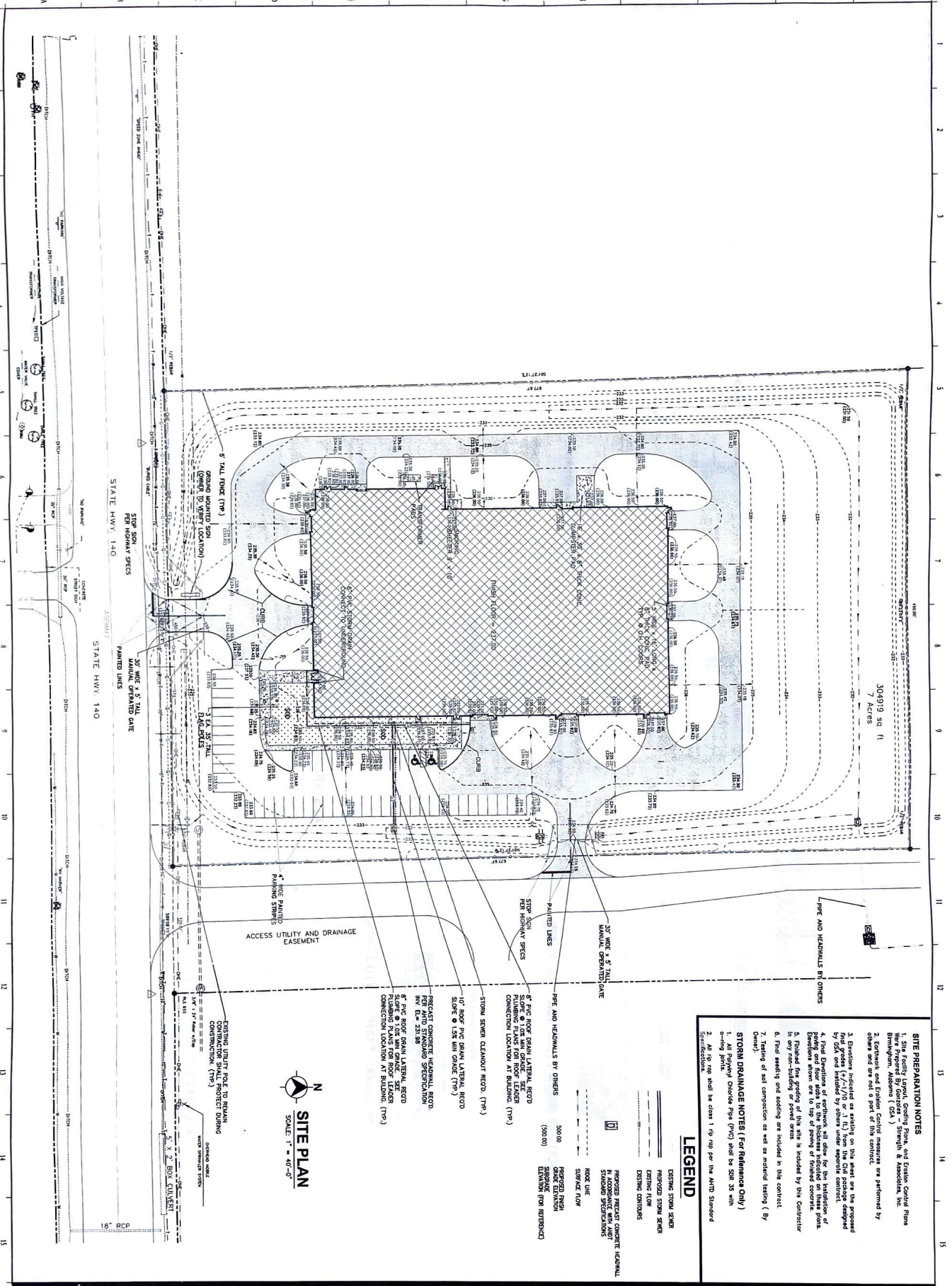
New Manufacturing Facility
SHIMIZU KOGYO

OSCEOLA, ARKANSAS

SHEET TITLE
SITE PLAN

DESIGNED BY: 2101AR
DATE: 02-13-04

SHEET NO.
G1.1



SITE PREPARATION NOTES

1. Site Facility Layout, Grading Plans, and Erosion Control Plans were prepared by Geotrex, Inc., Strength & Associates, Inc. Birmingham, Alabama. Erosion Control measures are performed by Geotrex, Inc. and are a part of this contract.
2. All topography and existing conditions are as shown on the attached site plan.
3. Erosion control measures shall be installed on the entire site prior to the start of construction.
4. Final Erosion Control Plan, including all details for the installation of erosion control measures, shall be provided to the contractor by Geotrex, Inc. prior to the start of construction.
5. Final seeding and sodding are included in this contract.
6. Final seeding and sodding are included in this contract.
7. Testing of soil compaction as well as material testing (By Owner).
8. All topography shall be class 1 topography per the AASHTO Standard Specifications.

STORM DRAINAGE NOTES (For Reference Only)

1. Stormwater shall be collected in the catch basins and conveyed to the stormwater pond.
2. All topography shall be class 1 topography per the AASHTO Standard Specifications.

LEGEND

- EXISTING STORM SEWER
- PROPOSED STORM SEWER
- EXISTING CONDUITS
- PROPOSED PRECAST CONCRETE INTERMEDIATE MANHOLE
- PROPOSED PRECAST CONCRETE INTERMEDIATE MANHOLE WITH LIGHT
- SHALLOW STRUCTURES
- ROCK LIME
- GRAVEL FILL
- PROPOSED MESH
- SHALLOW ELEVATION (FOR REFERENCE)
- PROPOSED PRECAST CONCRETE INTERMEDIATE MANHOLE WITH LIGHT
- SHALLOW STRUCTURES

SITE PLAN
SCALE: 1" = 40'-0"

- STORM SEWER CLEANOUT REQ'D. (TYP)
- 10" ROOF PVC DRAIN LATERAL REQ'D. SLOPE @ 1/8" PER FOOT (TYP)
- PRECAST CONCRETE INTERMEDIATE MANHOLE WITH STANDARD SPECIFICATION. INV. EL. = 231.96
- 8" PVC ROOF DRAIN LATERAL REQ'D. FLUSHING PLANS FOR ROOF LEADER CONNECTION LOCATION AT BUILDING. (TYP)
- 10" ROOF PVC DRAIN LATERAL REQ'D. SLOPE @ 1/8" PER FOOT (TYP)
- PRECAST CONCRETE INTERMEDIATE MANHOLE WITH STANDARD SPECIFICATION. INV. EL. = 231.96
- 8" PVC ROOF DRAIN LATERAL REQ'D. FLUSHING PLANS FOR ROOF LEADER CONNECTION LOCATION AT BUILDING. (TYP)

ACCESS UTILITY AND DRAINAGE EASEMENT

STATE HWY. 140

304919 sq ft
7 Acres