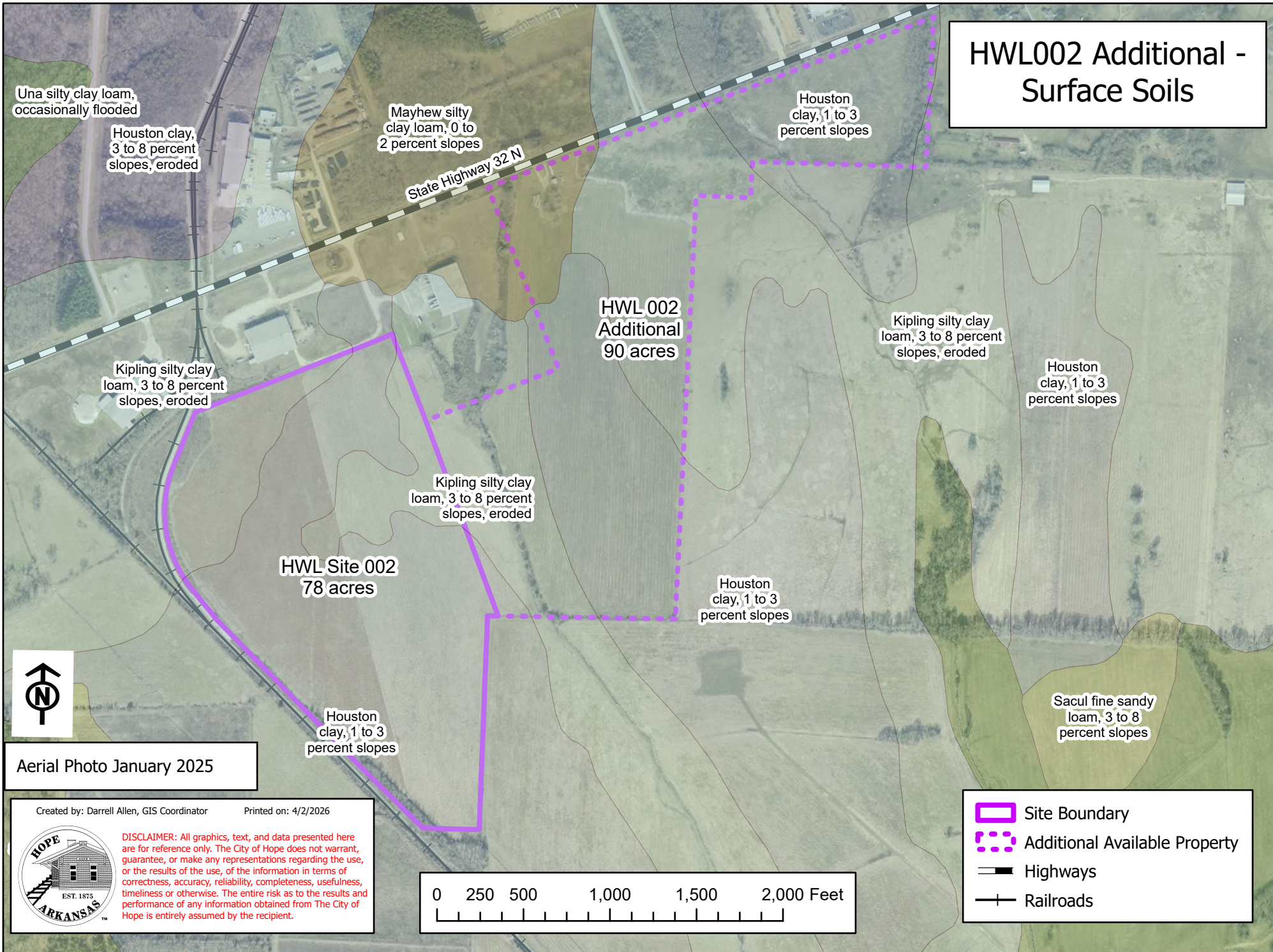


HWL002 Additional - Surface Soils



Una silty clay loam, occasionally flooded

Houston clay, 3 to 8 percent slopes, eroded

Mayhew silty clay loam, 0 to 2 percent slopes

Houston clay, 1 to 3 percent slopes

State Highway 32 N

HWL 002 Additional 90 acres

Kipling silty clay loam, 3 to 8 percent slopes, eroded

Kipling silty clay loam, 3 to 8 percent slopes, eroded

Houston clay, 1 to 3 percent slopes

Kipling silty clay loam, 3 to 8 percent slopes, eroded

HWL Site 002 78 acres

Houston clay, 1 to 3 percent slopes

Houston clay, 1 to 3 percent slopes

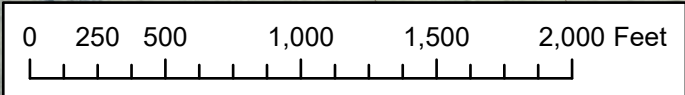
Sacul fine sandy loam, 3 to 8 percent slopes



Aerial Photo January 2025

Created by: Darrell Allen, GIS Coordinator Printed on: 4/2/2026

DISCLAIMER: All graphics, text, and data presented here are for reference only. The City of Hope does not warrant, guarantee, or make any representations regarding the use, or the results of the use, of the information in terms of correctness, accuracy, reliability, completeness, usefulness, timeliness or otherwise. The entire risk as to the results and performance of any information obtained from The City of Hope is entirely assumed by the recipient.



- Site Boundary
- Additional Available Property
- Highways
- Railroads